



TE KURA O MIMITANGIATUA

**Where the Country,
Coast and Classroom meet we **Think,**
Ask, Do, Discover Together.**

24th July 2025

Welcome Back

Tēnā koutou,

Welcome back to Term 3. After enduring a wet and windy Week One, it has been wonderful to be out and about in the wonderful Taranaki Sunshine. We are back underway with our learning for Term 3. We are starting to look into our hauora (wellbeing) and ways that we can help ourselves and others to feel better.

This Term we are looking forward to several events and activities. Our Matai class have already participated in our school EPro8 challenge. This was an exciting and enjoyable experience, with the students creating a range of mechanical objects such as ball launchers and a jack in the box. The winning team will go on to represent our kura at the interschool challenge later this term.

As we have done in previous years, Mimi School will be hosting the Tainui Cluster Cross Country. This is a wonderful opportunity to host the other schools in our cluster and participate in some friendly competition, just as we have done in events like swimming sports, athletics, and speeches.

In a few weeks time, our Year 6 students will have the opportunity to participate in a Taranaki young leaders conference called LEAD. This will be a chance for them to interact with 10-13 year olds from all over Taranaki and learn valuable leadership skills that they can bring back to our school.

By now, you should all have received infor-

mation about the upcoming school board elections. Alongside this information you should also have received nomination forms for our parent board representatives. We have 5 parents on our board of trustees as well as a staff and principal representative. I strongly encourage you to consider joining our school board and doing your part to shape the direction of our school. There is more information on this process later in the newsletter.

Ngā mihi nui,
Tom Hardy.

Mimi School Values

This year we will continue to unpack and develop our understanding further in relation to our school values, while explicitly teaching these daily. The hope is for our tamariki to apply these in everything that they do around our kura, at home and our community.

Our school values **Ngākau Mahaki - Respect**, **Kia Maia - Courage**, **Mana Motuhake - Independence** and **Kia Manawanui - Perseverance** are the four cornerstones to the Mimi School curriculum. As a school whānau we believe that instilling our children with these cornerstones will provide them strong foundations to live by.

To acknowledge our tamariki who are uplifting these qualities during break times kaimahi (staff) will continue to give out 'Ka mau te wehi' cards where a weekly draw will take place at assemblies. Students drawn will receive a juicy or a prize from the prize box. A

23 Pukearuhe Road, RD 44, Urenui, 4377

Phone 752 3617, mobile 027 752 3617

Email admin@mimi.school.nz

www.mimi.school.nz

major draw takes place in weeks 3, 6 & 10 of each term. All 'Ka mau te wehi' cards are put into a box and two names are drawn. Students will either win lunch on Matua to the value of \$10 or a sports ball.

Congratulations to last weeks' award winners! It is fantastic to celebrate the various students succeeding across our kura.

Tumuaki Award:

Taylor Darling For outstanding leadership within our kura. Well done.



Student of the Week:

Over the last two weeks the 'Student of the Week Awards' went to:

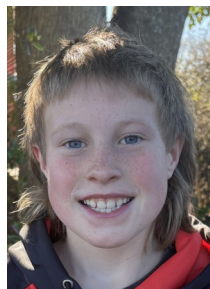


Kowhai:

Jimmy Murray For trying super hard with your maths and completing all of your work. Well done.

Matai:

Charlie Kilpatrick For volunteering to work alongside various class members.



Duffy Caught being good awards



Poppy Gardner For whilst reading, the use of various expressions were amazing, especially to speaking parts of the text. Whaea Lisa



Making Cous Cous

On Tuesday Miss Halcombe and Whaea Lisa brought some ingredients in for us to try as we did a quick hands up the day before to see who has tried Cous Cous before? There were only a couple hands up that had tried it before. So Miss Halcombe decided that we would make it the next day. I was chosen to assist with cooking Cous Cous. I put the sliced almonds in the pan that were cooked in butter first so they were brown on each side. I then took them out, added diced onions, leek, celery, garlic, lots of pepper, some salt, until they were cooked through. Miss Halcombe poured Cous Cous into a large bowl with 2 cups of boiling water. That was for 2 minutes. Then I added lemon juice, parsley, almonds, onions, leeks, celery into the big bowl and folded it through. Then Miss Halcombe gave everyone a small bowl of Cous Cous to try.

By Charlie



Board Elections Description

For those of you who are interested, the purpose of a school board is to govern the school. This governance includes setting the strategic direction of the school, developing and approving policies, ensuring student achievement, and communicating the needs of the entire school community. Our board members play a vital role in ensuring that our school is a positive and nurturing environment for our students.

We have 5 parent representatives on our board, alongside a staff representative and the school principal. As a board member you will be required to meet twice termly to discuss and decide on a range of school issues. There will also be opportunities to interact with the school community outside of these meeting times. For any more information around the roles and responsibilities of a board member, please feel free to get in touch with Tom Hardy or any of the current board members.

You should all have received nomination information over the past few weeks. If you haven't, please check your junk emails or contact the school. The information provided in this email clearly explains the process for nominating yourself or others as a board representative. These nominations must be submitted via email or returned to the school **before 12pm on Wednesday the 6th of August**. If more than 5 nominations are received, voting will take place after this date.

I strongly encourage you to consider applying to be a parent representative on the board. It is a commitment but one that greatly benefits the entire Mimi School community. Thank you for your time and consideration.

School Lunch Orders:

Fridays are lunch order days.

Please place your orders at the school office before 9am.

Thankyou to those parents who have offered to pick these up.

FRIDAY LUNCH
Place your orders at school office before 9am

New Price List 2025

Bridge Pie	\$1.80	GF option \$2.00
Mince Pie	\$5.50	
Sausage Roll (GF)	\$2.00	
Sandwich	\$5.70	(Ham & Egg, Egg or B.L.T)
Chicken Wrap	\$7.00	
Bread Roll - full size only	\$5.70	(Ham or Chicken)
Hot Chips & 1 Breast Strip	\$6.00	
Hot Chips & 2 Breast Strips	\$8.00	
Hot Chips	\$3.00	
Yoghurt	\$2.00	
Large Muffin	\$4.50	
Cookie	\$2.50	GF option \$2.80
Brownie (GF)	\$2.50	
Popcorn (GF)	\$2.90	
Lolly Cake	\$3.00	(bought from school)
Milk Drink/Juice	\$1.50	(bought from school)

Spare Clothes

Can we please make sure that our tamariki have a set of spare clothes in their school bag.

The tamariki love playing outside but it is that time of year where the playground is often wet and muddy.

Thank you

Absences

We would like to remind everyone to please let the school office know if your child is away and the reason. You can do this via the HERO app, by texting the school phone or phoning the school.

The 'reason' for the absence is important as it denotes the way we record the absence to the ministry.

If you need any support with your child attending school please get in touch with the staff and we can come up with a plan to improve attendance.

Term 3

Calendar

BOT HUI	<i>Tues 05th Aug</i>
CLUSTER CROSS COUNTRY	<i>Fri 29th Aug</i>
BOT HUI	<i>Tues 02nd Sept</i>
EPro8 INTERSCHOOL CHALLENGES	<i>Wed 03rd Sept</i>
TEACHER ONLY DAY - MATHS PLD	<i>Mon 08th Sept</i>
WIG WEDNESDAY FOR CANCER	<i>Wed 10th Sept</i>
LIFE EDUCATION	<i>Mon 15th Sept</i>
CONFERENCES AFTER 3PM	<i>Thurs 18th Sept</i>
CONFERENCES ALL DAY	<i>Fri 19th Sept</i>
LAST DAY OF TERM 3	<i>Fri 19th Sept</i>
FIRST DAY OF TERM 4	<i>Mon 06th Oct</i>
PETS DAY	<i>Sat 18th Oct</i>

* Trips that require parent transport

Please contact Tom or Connie for further information.

School Docs

As part of our responsibilities as a school we review our policies and procedures regularly. We invite you to view our policies on the School Docs website to see which policies are up for review.

www.schooldocs.co.nz

Username - mimi
Password - pukearuhe

