



Papatoetoe West School

Together We Strive For Growth Through Learning

Let's get school ready!

Items your child needs to bring to school...

Stationery

This year our stationery lists came home with your child's report last year. If you need another copy they can be found on our school website - scroll through to find the correct year level or order the packs through Qizzle



Hats

Our school policy is that in term 1 and 4 the students **MUST** wear a hat when they are outside the classroom. Please ensure your child has a named hat at school each day. If your child can leave a hat at school each day, that would be appreciated.



Drink bottle

Please ensure that your child has a **NAMED** drink bottle. In this weather it is important to keep hydrated.

Swimming togs

All our students participate in swimming in Term 1. Our Year 0-3s use our school pool and our Y4-6s students participate in community swimming at Papatoetoe Centennial pools once a week.

The classroom teacher will let you what days their class is swimming so you know when your tamariki need their togs.



Book bag (Y0-3 only)

Students should bring their book bag each day.

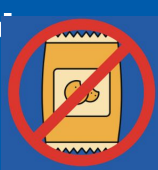
PE Shirts (Y3-6 only) House Teams

You will notice the purchase of a T-shirt is on the stationery list, which can be purchased at school for \$19.50. If your child still fits their one from last year, they don't require a new one!

Zero-waste healthy snacks

Snacks that shouldn't be brought to school

Snack or large packets of chips
Whole packets of biscuits
Fruit strings/sticks/roll-ups
Drinks other than water



Some suggestions for zero-waste healthy snacks:

Fruit

Vegetables e.g. carrot sticks, broccoli, cucumber

Rice crackers

Mini muffins

Popcorn

Small rice dish

A sandwich

Vegetable crisps

Trail mix, Nuts and seeds



We are working hard to reduce waste at our kura. If students bring a snack for their second break, we ask that it is **zero-waste**.

This means:

- Using **reusable containers** instead of throwaway packaging.
- Buying snacks in bulk and packing smaller amounts at home.

Students need to bring home any rubbish left over from their lunches. This supports our goal to

'Be Sustainable', which we know is important to our community. Thank you for helping us with this kaupapa.



Only a couple of things- it's a snack!



Papatoetoe West School

Together We Strive For Growth Through Learning

SCHOOL UNIFORM 2026

Dear Whānau,

This message is to remind families about our school uniform expectations and the uniform options available to support our students.

Papatoetoe West School continues to offer uniform items through NZ Uniforms, providing families with access to durable and appropriate uniform choices for students. This initiative is part of our ongoing efforts to provide high-quality, durable uniform choices for our students.

We would like to remind families about our footwear and sock expectations, which will be more consistently applied starting from the start of this year. Your support in helping students transition to wearing the appropriate footwear in line with these guidelines is greatly appreciated.

We understand that this may require some families to make small adjustments, and we thank you for your cooperation in ensuring that students meet these footwear expectations. Through our partnership with KidsCan, with adequate notice, we are able to provide appropriate school shoes for any families that would like support with this. This can be arranged through our school office.

We will be more actively supporting students to follow these guidelines. Thank you for your ongoing support in maintaining smart, safe, and consistent uniform standards for all students.

Ngā mihi nui,

Papatoetoe West School Board

A copy of the school uniform policy can be found on SchoolDocs <https://papwest.schooldocs.co.nz/>

A copy of our school uniform rules can be found with our enrolment information, and at the school office.

Footwear Guidelines:

- **Main Shoe Type:** Students are required to wear plain black lace-up shoes or Velcro fastened shoes. These shoes should be sturdy, comfortable, and suitable for everyday school activities.
- **Sandals:** Students may wear plain black sandals with a secure back strap, such as Roman sandals or school sandals, which provide comfort and support while maintaining a neat appearance.

Sock Guidelines:

- Plain black or navy blue, with no logos or patterns visible.



Footwear Not Allowed:

- Casual footwear like clogs
- Heelys
- Open-toed shoes
- Ballet flats
- Jandals
- Sandals without a back strap

Stay Connected with us

Skool-loop is our main app we use for communication (all notices/newsletters through the app are also automatically loaded on our website).



Facebook

Follow us on facebook! We'll be using this platform to share some of our tamariki's learning experiences as well as some key reminders.



Your Contact Information

If you have moved or changed phone numbers over the holiday, please contact your child's teacher or the school office so that we can update your information. It is **imperative** that this is up to date so that we can be in touch if there are any concerns, celebrations or emergencies.

Seesaw

Seesaw won't be used as a platform school-wide this year

Planned absences

The Importance of Attendance

Regular attendance is vital for your child's learning and well-being. Being at school every day ensures they don't miss out on key learning opportunities and helps build strong routines.

A gentle reminder:

- If you need to plan an absence, please notify us in advance.
- Please email or see the Principal or Deputy principal (sandyt@pap-west.school.nz or emmam@pap-west.school.nz).
- Requests for absences longer than one week, especially for holidays, are unlikely to be approved. In line with Ministry of Education guidelines, extended absences may result in your child being removed from our roll.

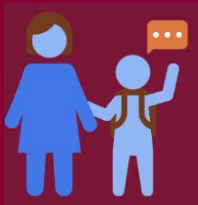
Let's work together to make attendance a priority and set our students up for success.

Traffic at the School

Work is been completed over the next few weeks to make our Drop Off Zone a safer space for our students.

The drop off zone will be closed from 1:45 pm each day. You will not be able to park in this area to pick up your children,.

A reminder that we have plenty of off street parking on Hillcrest road as well as at the Panthers carpark.



Drop off/pick ups Safety reminder

School gates open at **8:15 am**. Please do not drop children off earlier as there is no supervision. Students must also be picked up by **3:10 pm**.

We kindly ask families to limit early pick-ups during the day to avoid disrupting learning. Tracy Follas, one of our wonderful Learning Assistants, will be supporting with these matters.

Thank you for your cooperation as we start the year strong!





Papatoetoe West School

Together We Strive For Growth Through Learning

2026 dates

TERM 1

Number of weeks	9
Term start & end dates	Term starts: Monday 2 February to Thursday 2 April (86 half days)
Public holidays	Waitangi Day - Friday 6 February
School holidays	Friday 3rd April - Sun 19th April (includes) <ul style="list-style-type: none">• Good Friday - Friday 3 April• Easter Monday 6 April

TERM 2

Number of weeks	11
Term start & end dates	Term starts: Monday 20 April to Friday 3 July (106 half-days)
Public holidays/ School not open for instruction	ANZAC DAY - Monday 25 April King's Birthday- Monday 1 June
School holidays	Saturday 4 July- Sunday 19 July

TERM 3

Number of weeks	10
Term start & end dates	Term starts: Monday 20th July to Friday 25th September (100 half-days)
Public holidays	None
School holidays	Saturday 26 September to Sunday 11 October

TERM 4

Number of weeks	10
Term start & end dates	Monday 12th October to Wednesday 16th December (94 half days)
Public holidays	Labour Day - Monday 26 October

- 386 half days in 2025
- Ministry of Education to allow for 2 additional teacher only days (date TBC)

School-wide events

Here's a look at some of the key events and special weeks we share across the year. We also acknowledge and celebrate other occasions – like other Language Week (LWs), environmental initiatives, health-focused days. For the latest updates and dates, please check our fortnightly newsletter or the 'Upcoming Events' page on our school website.

JANUARY

01

FEBRUARY

02

MARCH

03

5 - WHAKATAU



16-20 BOOK WEEK



27 HOUSE SPORTS

16- 20 INTERNATIONAL WEEK



APRIL

04

24 WHAKATAU



MAY

05

JUNE

06

1- 5 SAMOAN LW



30/6-1/7 PARENT
TEACHER MEETINGS

JULY

07

3 MATARIKI
PARAKUIHI



24 WHAKATAU



AUGUST

08

3-7 COOK ISLAND LW

14 FUN RUN



17- 21 TONGAN LW

SEPTEMBER

09

21-25 TE WIKI O TE REO
MĀORI



OCTOBER

10

16 WHATAKAU



26-30 FIJIAN LW



NOVEMBER

11

6- JUNIOR ATHLETICS
10- SENIOR ATHLETICS



9-13 INDIAN LsW

DECEMBER

12

9 - PERFORMANCE EVE



14- PRIZE GIVINGS



PAPATOETOE WEST SCHOOL

UNIFORM INFORMATION

WHERE & WHEN CAN YOU BUY YOUR UNIFORM?

NZ Uniforms: Unit 5, 20 Lambie Drive, Manukau.

Store Hours: Monday-Friday 9am-5pm, Saturday 9am-4pm.

Phone: 09 950 6747 | **Email:** manukau@nzuniforms.com

Shop Online: pap-west.nzuniforms.com

HOW CAN YOU PAY?

WINZ/OT/Charities/Trusts/Whānau & Family QUOTES

WINZ CUR Number: 001604113

You can also get a Quote online. Just add your items to the shopping cart and choose the Quote option at the checkout. Visit our website for more information on getting a Quote.

OTHER PAYMENT OPTIONS

Uniform Club: Save for your student's uniform by adding regular payments to your Uniform Club account during the year. Visit our website to find out more about Uniform Club and to join.

We also accept **Afterpay** (in-store only), and **Zip** (in-store & online). Visit our website to find out more about Zip and to join.

We also accept cash, eftpos and credit cards.

NAME LABELLING

We can attach your name to your uniform items for only \$4 per label while you wait. Guaranteed to last.

NZ UNIFORMS ALSO STOCKS

School shoes, school bags, belts, socks, hair accessories, shoe polish, boxers and more.

Visit our website for more details-
www.nzuniforms.com