

Term 1 Week 3

CTMS EVENTS

16 - 20 February 2026



To inspire in each pupil a thirst for learning, drawing on the rich opportunities available to a small inner-city school.

Clifton Terrace
Model School

15 Clifton Terrace,
Kelburn

(04) 472 7519

staff@ctms.school.nz

Kia ora tātou. Hello. Nǐ hǎo. Konnichiwa. Namaste. Namaskar. Selamat. Kumusta. Xin chào. Shubha dinam. Vanakkam. Néih hóu. Ayubowan. Hola. Marhaba. Talofa. Sawubona. Shalom. Pryvit. Aloha. Privet. Bonjour. Ciao. Bula vinaka. Annyeonghaseyo.

Kia ora e te whānau,

We are sad to say 'haere rā' to Gezi and his family, who are moving to Napier. Gezi has been a wonderful part of our school, and while we are sad to see them go, we wish them all the very best for their new adventure in the Hawke's Bay. We will miss you!

Next week is a special time of reflection and joy as we acknowledge Chinese New Year, Ramadan, and other significant cultural celebrations based on the lunar calendar. In line with this, our Kupu o te Wiki (Word of the Week) is *Whakanui* (to celebrate). We invite students to help translate this word into their home languages and write it on our Hui Board. Speaking of celebrations, we hope to see you all at our first community event for 2026—Meet the Teacher and Takeaway Night!

- When: Wednesday, 18 February
- What: Meet the Teacher at 4:30pm. From 5:00pm, bring your takeaway of choice and join us for a relaxed, fun evening.

Connecting with you regarding your child's progress is a priority for us. Next week, you will receive a booking form for our upcoming Student Learning Conferences held on Monday, 2 March and Tuesday, 3 March. These meetings are a valuable opportunity to sit down with your child's teacher, discuss their current progress, and set meaningful goals for the year ahead. Please keep an eye out for the booking link to secure a time that works for you.

Happy Valentine's Day for tomorrow!





CTMS SCHOOL POLICIES

<https://ctms.schooldocs.co.nz>

Username - ctms

Password - CliftonT

Feedback due by 2 April 2026.

Why Policies Matter at Our School:

School policies serve as an "instruction manual," ensuring we provide a safe, fair, and legally compliant environment for every student. Because New Zealand schools are self-governing, these policies translate national laws—such as the Education and Training Act and Health and Safety requirements—into clear daily practices that protect our children and staff.

We welcome feedback from whānau on our school policies. This term we are reviewing policies in the Health, Safety, and Welfare Policy section:

- Alcohol, Drugs, and Other Harmful Substances Policy
- Sun Protection
- Digital Technology and Online Safety
- Cellphones and Other Personal Digital Devices
- Safety and Welfare for Students on Work Experience (composite/secondary only)
- Firearms



What Sun Protection Looks Like at CTMS

Core protection practices are mandatory during school hours and all off-site activities (sports, EOTC).

- The "No Hat, No Play" Approach: Students must wear broad-brimmed hats for all outdoor activities. Those without hats are restricted to shaded areas or indoor spaces during breaks.
- The school prioritises shade in property planning and requires students to eat lunch in shaded or indoor areas.
- The school provides broad-spectrum SPF30+ water-resistant sunscreen and encourages regular water intake to prevent dehydration.
- Sun safety is taught annually across all year levels using age-appropriate information about UVR.
- Teachers and staff are expected to model these behaviors themselves, reinforcing the "SunSmart" culture.
- The Board regularly reviews shade structures and uniform expectations.



Help Us Stay SunSmart at CTMS

We want our tamariki to enjoy the outdoors safely! We've noticed some bare heads during break times, so we are re-enforcing a strict 'No Hat, No Play' rule to ensure everyone is protected from UV radiation. If your child is missing their hat, they'll bring home a reminder note. We appreciate your support in checking that a school-appropriate hat (wide-brimmed or bucket style) makes it into their bag each morning - or even better, stays in their desk at school.

Kupu o te Wiki

*whakanui -
celebrate*



THIS WEEK AT CTMS

Monday 16 February.

- Librarian visit to CTMS - kia ora kōrua Stephen raua ko Corinna

Tuesday 17 February.

- 5pm, Board meeting

Wednesday 18 February.

- Year 7&8 Tech at Mt Cook
- 4:30pm - Meet the Teacher
- 5:00pm - Takeaway Night community evening

Thursday 19 February.

- Sushi and dumplings lunch orders
- Sport at Kelburn Park

Friday 20 February.

- Kapa Haka and Spanish



Upcoming dates:

Please mark these in your diary!

- **2 and 3 March**, Goal setting conferences
- **13 March**, Vision and Hearing screening
- **16 March**, first visit to Te Matapihi library
- **26 March**, Up the Hill trip (Kōwhai & Kahikatea)
- **2 April**, Marine Education Centre trip

Term One: 2 Feb- 2 April

Term Two: 20 April - 3 July

Term Three: 20 July - 25 September

Term Four: 12 October - 15 December

A reminder to whānau - please keep the school term dates in mind if you are booking a holiday for 2026!

Student Spotlight



Ava

Hi my name is Ava.

I am a Year 8 student. I love puppies and my favourite sport is netball. I moved to CTMS when I was only 8 years old and from day one I have loved it here. The thing I like most about CTMS is that it's not like any other school - it has less people and more community. The one thing I enjoy doing is being a role model and all the responsibilities, such as Passport to the City and organising sushi. I wish I came here from Yr 1.
BEST SCHOOL EVER!!

CHESS IS FOR EVERYONE

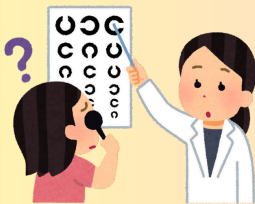
Join the CTMS chess club!

Learn to play chess with an
Instructor: Gordon

Club Details

When: Thursdays 3.15-4.15 at CTMS.

Contact: raydeen@ctms.school.nz
All ages welcome!



Years 1-6 Vision and Hearing Screening (Year 7 Vision Screening only) Friday 13 March 2026, 9:00am

Information for parents:



Health New Zealand, Te Whatu Ora provides a vision and hearing screening programme for all Year 1-6 students (and a vision screening for Year 7 students).

- Vision – pupils will be advised of results at the time of screening. If further assessment is recommended you will be notified by mail.
- Children who wear glasses and/or are under professional care and have regular checks will not require a vision check from our service.

Non-consent – please notify your school if you do not want your child being screened. This screening is not a full assessment of your child's vision. If you have any concerns, please see an optometrist.



VISITING HE TOHU EXHIBITION





Fluro Girls Golf
- a fun day at
the Royal
Wellington
Golf Club

