

EAST TĀMAKI SCHOOL

**Te Kura O Tāmaki Ki
Rāwhiti**



**INFORMATION FOR
FAMILIES**

2026

Kia Kotahi Tātou

Let us come together as one

We welcome parents and families to the
East Tāmaki School community.

East Tāmaki School Vision

***Inspire Learners
Strengthen Mana
Influence the Future***

***Whakaohooho ngā ākonga
Whakamana
Whakaaweawetia ā mua***

PO Box 58-035
Botany
Auckland
2163

Phone: 09 274-9246
Mobile: 021 02944884

Email: office@easttamaki.school.nz

Website: www.easttamaki.school.nz



East Tāmaki School Values

Ngā Uara

Manaakitanga

Shows respect. Shows kindness. Cares.

Piripono

Keeps trying. Shows pride in learning.

Kaitiakitanga

Cares. Protects. Is future focussed.

Whanaungatanga

Works together. Connects. Belongs.

East Tāmaki School Whakatauki

*Ko te manu e kai ana i te miro,
nōnā te ngahere.*

*Ko te manu e kai ana i te mātauranga,
nōnā te ao.*

*The bird that partakes in the miro berry,
owns the forest.*

*The bird that partakes in education,
owns the world.*

East Tāmaki School Key Competencies *Hikurangi*

Self-Manager - Ruru

Is organised, makes good choices, achieves goals

Collaborator – Pūkeko

Solves problems, finds information,
works well with others

Communicator - Tūi

Talks about ideas, talks with others, good listener

Thinker - Kiwi

Asks questions, thinks about their learning,
finds new ways of doing things

Hauora - Kererū

Looks after themselves and their belongings,
cares about people, is kind



Daily Routine

8.00 – 8.15 Arrive at school

8.30 Learning begins

10.45 – 11.15 Morning Break

11.15 – 11.30 Eating Morning tea

11.30 Learning time

12.45 – 1.15 Lunch Break

1.15 – 1.30 Eating Lunch

1.30 – 2.45 Learning time



School Times

Children are expected to be at school by 8.15am every day.

Children can arrive between 8.00am – 8.15am. The school is not responsible for children who arrive before 8.00am.

At the End of the Day

All children are to go straight home at 2.45pm except those who are waiting to be picked up by an after school care service such as SKIDs.

East Tāmaki School staff cannot supervise children after this time. Please do not ask us to do this. It is the parents' responsibility to ensure children get home safely.

If you have an emergency which means you will be a little late to pick up your children please phone the office

East Tāmaki School

Expectations



School Expectations of Whānau

Attendance

It is important that:

- Children are at school by 8.15am.
- Children attend school every day unless they are very, very sick.
- Phone the school if a child is very, very sick and is away from school.

Bags

Your child is expected to:

- Bring a schoolbag and book bag to school every day.

Uniform

Your child is expected to:

- Wear the full clean school uniform every day including school shoes.

Food

Children are given a free healthy lunch and a piece of fruit every day. If parents want to provide additional food that is fine so long as it is healthy food.

Support

Parents are expected to:

- Listen to your child read the books that they bring home and talk about these.
- Support the school in activities such as home learning and parent learning discussions.

Parking

- **Please do not park in the Preston Road School Carpark.** The best place to park is at the Fisher Crescent school entrance.

Attendance

- If a child is away please phone the school on 274-9246.
- All children are expected to come to school every day unless they are very, very sick.
- If a child is away without notification the attendance service or neighbourhood police team may be informed, to find out why the child is away.

Behaviour

We are a PB4L school – Positive Behaviour for Learning. We call our PB4L ‘Mana Up’.

The East Tāmaki School community will create a safe environment for learning where everyone feels respected, supported and included. Children’s behaviour will be addressed fairly and effectively.



There are many ways that we reward the expected behaviours including certificates, dojo points and Kapai Awards. We award class dojo points for showing excellent behaviour.

If children constantly behave inappropriately parents will be informed to work alongside the school to help the child.

If you have any concerns please contact the office to make an appointment.

East Tāmaki School Uniform

Children are to wear the correct and clean uniform every day. Please put your child's name on all items of the uniform. Please note that the only earrings a child can wear are studs not hoops or dangly earrings. This is for safety reasons. Children are not to wear make-up or nail polish to school.

Available at East Tāmaki School

Details and prices as follows:

Polar Fleece	\$42.00
Short Sleeve Polo Shirt	\$42.00
Sun Hat	\$15.00



To be purchased at any shop

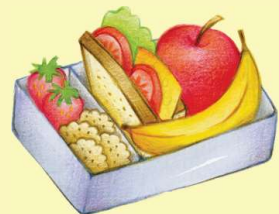
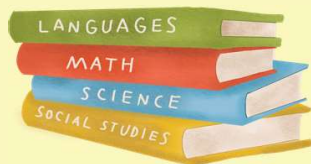
Shorts – black
Pants – black
Skirt – black
Socks – black

Black closed in appropriate school shoes or black sandals. All items purchased at a shop must be **all black** with no other colours on them.

Boots, jandals, crocs and slip on shoes are not acceptable nor safe footwear.

Books, Pens and Pencils

- Parents need to buy books, pens and pencils on the day your child enrolls.
- Parents should buy these from East Tāmaki School as stationery bought from other places is almost always inappropriate, i.e. wrong lines in writing books. To replace these items ends up costing parents more money than they would have paid if buying from the school.



Food at School

- East Tāmaki School is a Health Promoting school and Garden to Table school.
- **Children are given a piece of fruit for morning tea and a healthy lunch every day.**
- Parents can provide food themselves and we expect this to be healthy.
- Children can only bring water to drink at school.
- If children bring food or drink which is not healthy such as twisties, lollies or sugary drinks they will not be able to eat them at school.
- Chewing gum and bubble gum are not allowed in the school grounds by anybody.

School Newsletter

Newsletters go out most weeks. Parents need to look out for them as they have many important notices in them.

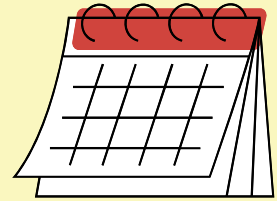
Terms for 2026

Term 1: Tuesday 27 January to Thursday 2 April

Term 2: Monday 20 April to Friday 3 July

Term 3: Monday 20 July to Friday 25 September

Term 4: Monday 12 October to Tuesday 8 December



Public Holidays

Auckland Anniversary

Monday 26 January

Waitangi Day

Friday 6 February

Good Friday

Friday 3 April

Easter Monday

Monday 6 April

Easter Tuesday

Tuesday 7 April

Anzac Day

Monday 27 April (*observed*)

King's Birthday

Monday 1 June

Matariki Day

Friday 10 July

Labour Day

Monday 26 October

Staff Only Day

Friday 27 February 2026

Friday 19 June 2026



Inquiry Concepts for 2026

- The Treaty of Waitangi
- Ecosystems
- Inventions
- Journeys

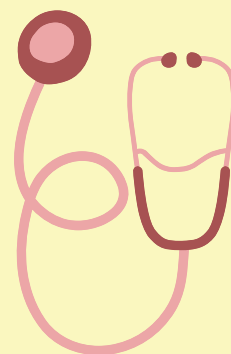


We will also:

- continue to emphasise achievement in reading, writing, oral language and maths.
- maintain the focus on school values and key competencies.
- continue to provide a focus on science and the environment.

Dental Nurse

The Dental Nurse is here from time to time.
The dental clinic phone number is 837-6635.



School Nurse

The school nurse is at school Monday to Friday for part of the day to support children's health. The Healthline is 0800 611 116 if you need more information.

Car Parks

For safety reasons parents are asked NOT to bring their cars into the school car park off Preston Road. If you wish to drop off or pick up children, please use the Fisher Crescent entrance. There is much less traffic and this is a much safer area for the children to wait.



Concerns and Complaints

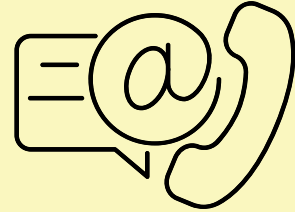
1. Talk to the class teacher by note or ring the school office.
2. If you are still not satisfied then arrange a meeting with the deputy principal or principal through the office staff.

If something happens at school that you are concerned about please contact us.

Addresses and Phone Numbers

If you change your address or phone number, please notify the school.

This is particularly important when we need to contact parents/caregivers in case of sickness or accident.



Dogs

Dogs are not to be brought into the school grounds. This includes dogs on a leash. This is for health and safety reasons.

Reporting to Parents

Written reports will be sent home at various times throughout the year.



Parent, student and teacher discussions are held each year with parents, students and the teacher. If you are in any way concerned about your child, please contact us and make an arrangement to come to school and discuss the matter with the principal and/or your child's teacher.

STAFF LIST

Principal	Sarah Mirams
Deputy Principal	Angela Didier
Assistant Principal	Jenni von Below
Room 1	Lydia Vea
Room 2	Jenni von Below & Angela Didier
Room 3	Lee Slater
Room 4	Rhian Fenton
Room 8	Stephanie Howard
Room 9	Taruna Naicker
Room 10	Tertia Brown
STEAM	Sara Brewer
Office Manager	Veronica Keswell
Office Administrator	Megan Alderton
Attendance Support Worker	Renee Elisala
Learning Assistants	Sandra Seymour Sharlene Yeo Amelia Tipasa Nga Tekeu Sapon Tua Lexi Erasmus Jen Post
Kitchen Specialist	Carol Anne Wegner
Garden Specialist	Fiona Wilkinson
Caretaker	Jon Tetley

BOARD MEMBERS

Presiding Member	Richard Mehana
Principal	Sarah Mirams
Staff Member	Jenni von Below
Member	TBC
Member	TBC

The Board meet once a month in the meeting room at 3.00 pm.

The public are welcome to attend these meetings.

A copy of the school Strategic Plan, Board Policies, Minutes and Agendas and various reports are available in the office.

