

# PUKEOWARE SCHOOL

NEWSLETTER

PUKEOWARE SCHOOL

AUGUST 22ND 2025

## FROM THE PRINCIPAL

Ata maarie, Boa Tarde, Nihao

I hope our school community has had a great week. We've seen some nice sunny days and it's exciting to see the daylight hours stretching out that little bit extra every day. I know our tamariki love playing outside with their friends and using their imagination. It's so important!



### Paid Union Meetings

Thank you for your understanding and support this week. This is the first time that union members from all roles in a school have been called to the same meeting. Historically teachers, support staff, the principal etc all have differing bargaining campaigns and at different times. To call all members on the same day made this very challenging for all schools. We didn't want to close, and weren't permitted to, so being able to collect your children early made it possible for our staff to attend the meeting, have their voices heard, and speak with other professionals who are facing the same challenges. Thank you.

### Piano Project – Paint Donations



Pukeoware School was approached by a student's family member to get creative and add to the community. A select group of students will be making over an old piano before it is refurbished internally and placed in a public space for others to play and enjoy. We are pretty excited!

We would be incredibly grateful to any families who have brightly coloured or dark paint at home that you would be willing to donate. We are looking for quality renovation paint that we can use to make the piano a joy to look at!



### Online Enrolments

Did you know that Pukeoware School's enrolment forms are now easily accessible online? By visiting the enrolment page on our website, parents of new pupils can complete all the paperwork online. We know this gives far greater flexibility to busy parents!

[Pukeoware School Enrolment Form](#)

## Environmental Superheroes

Thank you and ka pai to the Year 5-6 students who mucked in with a very enthusiastic parent group at the Marshs' farm last week! The Trees for Survival programme allows us to nurture and raise many hundreds of natives to plant in our local community. Approximately 800 native plants were carefully laid into their forever homes last week. The children involved will love seeing this area in their adult years.

Yesterday morning the Kaitiaki children were making over the vegetable beds behind Awaruaiti. This has truly transformed the space and will provide many edibles in the warmer months. It looks fantastic.

Mahi pai to Peyton Navarro for her huge effort in sewing 70 flower seeds at home which will be ready to sell as small annuals at Calf Club! Peyton is only 5 but she is very excited to be donating the proceeds to school!



Have the very best weekend ahead. We will see you all on Monday.

Ngaa mihi mahana

Nathan Hughes  
Tumuaki | Principal

"Poipoia te kaakano kia puaawai"

"Nurture the seed and it will blossom"

## UPCOMING EVENTS



### AUGUST

- 27 Oxford Pie Fundraiser Forms Due
- 29 PTA Lunch
- 29 Calf Club Entries Due

### SEPTEMBER

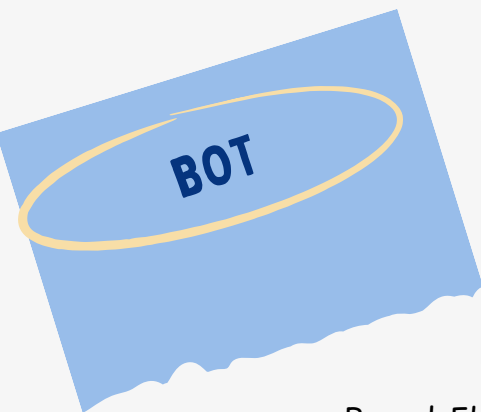
- 1 Assembly
- 1 Book Club Due
- 3 Board Elections
- 4 BOT Meeting
- 5 Yr 7 & 8 Technology
- 5 Mathex Competition
- 8 Yr 5 & 6 Basketball
- 9 Yr 5 & 6 Basketball Girls & Mixed Basketball
- 9 PTA Pie Fundraiser Collection - Studio
- 12 Yr 7 & 8 Technology
- 15 - 19 Yr 7 & 8 Camp
- 19 END OF TERM 3

### OCTOBER

- 6 START OF TERM 4
- 11 Calf Club

### IMPORTANT DATES

- BOT Election Day - 3<sup>rd</sup> September
- End of Term Three - 19<sup>th</sup> September
- Start of Term Four - 6<sup>th</sup> October
- Calf Club - 11<sup>th</sup> October

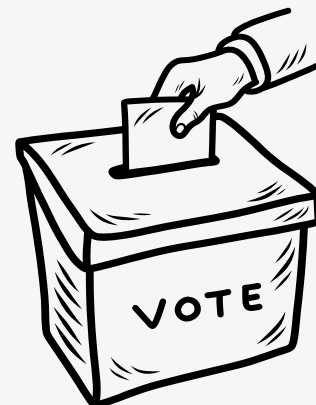


# BOARD ELECTIONS

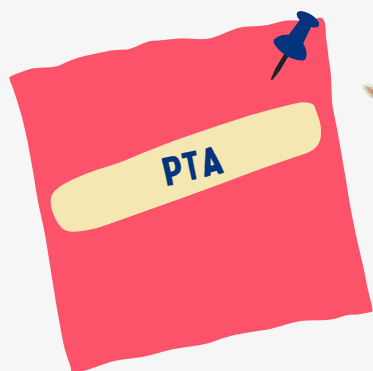
Board Elections – Have You Voted yet?

Voting papers for the School Board Elections were sent out two weeks ago. If yours hasn't arrived, it's possible your contact details are out of date. Please get in touch with the school office to check and update your information.

Completed voting papers must be returned by **Tuesday, 3 September**. You can drop them into the ballot box located in the school office.



Your vote is important—thank you for taking part in shaping the future of our school!



## CALF CLUB



Just a reminder that entries for this year's Calf Club close on **Friday 29th August**. If you haven't submitted yours yet, now's the time to get moo-ing!

Entry forms for Lambs, Goats, Calves, Chickens, Pets and The Bake Off are available from the office.

More Information can be found here: [Calf Club 2025](#)

## OXFORD PIE FUNDRAISER

Our Oxford Pie Fundraiser is here! We're thrilled to offer a mouthwatering selection of pies—perfect for sharing, gifting, or enjoying all to yourself!

Order forms were sent home last week and are due back by **Tuesday, August 27th**.

Pie pickup will be available between 2:30pm and 3:00pm on **Tuesday, September 9th**.



Don't miss out—spread the word to family and friends and help us make this fundraiser a tasty success!

## AWARDS

# LET'S CELEBRATE



### CLASSROOM AWARDS

TOTARA *Jazmine Saini*

PARAKAU *Indie Columbus & Angel Rauba*

MOKORAU *Atlas Moreira & Ethan Swinburne*

RANGIAWHEA *Angus Ewens & Ollie Frische*

WAITANGI *Poppy-Jane McLean & Ryder Brennan*

AWAROA *Lucas Dixon & Jaxon Griffin*

TAIHIKI *Lilly Lawson & Chloe Loveridge*



### WRITING AWARDS

TOTARA *Marnie Keatley*

PARAKAU *Eva Jithin*

MOKORAU *Hudson Nelson,  
Antonia van Slooten &  
Emma Swinburne*

RANGIAWHEA *Hudson Nealis*

WAITANGI *Ava Chesnokov*

AWAROA *Arius McMahon-Reedy*

TAIHIKI *Kayleb Ryan*



#### BEST STUDENT IN ASSEMBLY

This special award celebrates the student who shows outstanding assembly manners by sitting quietly and respectfully throughout. Each assembly, a different teacher will select the recipient, and at the end of the term, all winners will enjoy a well-deserved treat with Mr Hughes!

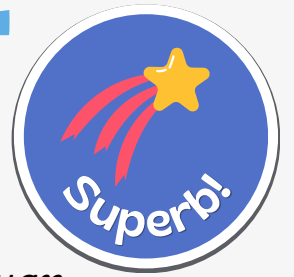
Best Student in Assembly...

*Eva Jithin*



AWARDS

LET'S  
CELEBRATE



## PRINCIPAL AWARDS



*Micah Broodryk*



*Kayleb Ryan*



*Leo Nelson*



*Precious Rauba -  
Papple*

WELCOME

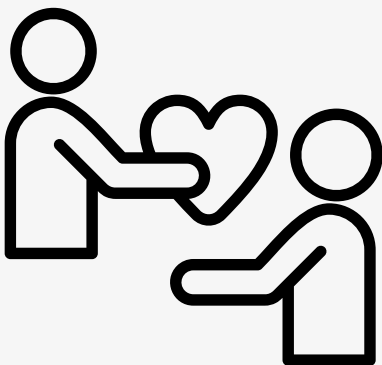


- Asher Khinda
- Zeb Perucich



## Manaakitanga Award

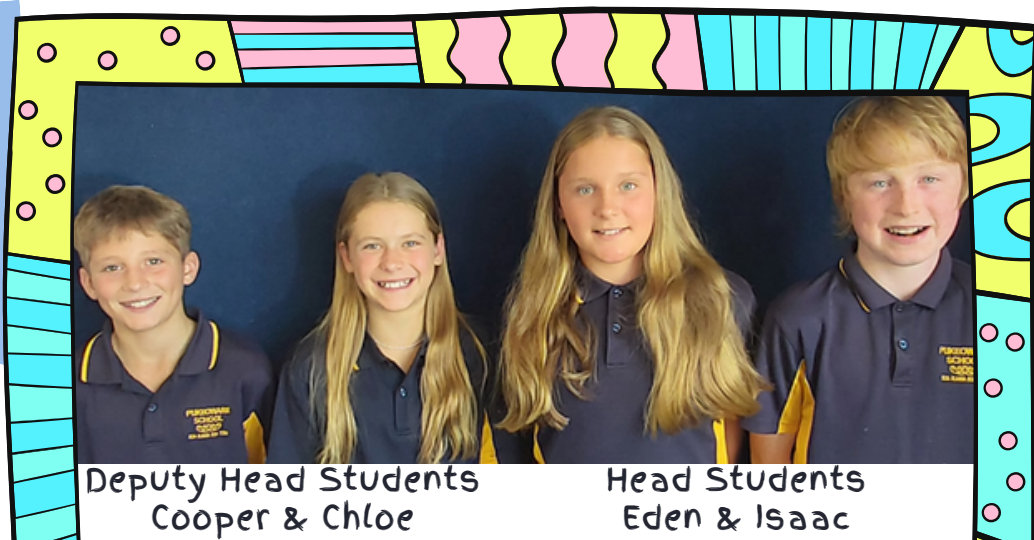
For care, kindness and support



The award recipient was away when we had assembly last week—but don't worry, their moment in the spotlight is coming soon. Keep your eyes peeled!"



# STUDENT LEADERS



Deputy Head Students  
Cooper & Chloe

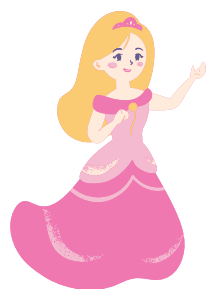
Head Students  
Eden & Isaac

## KNOWLEDGE



These are some general knowledge questions - see how many you get correct!  
The answers will be in the next newsletter!

How many strings has a Ukelele?



What is the name of the princess in 'Sleeping Beauty'?



In which language does 'Bonjour' mean hello?



What are the four last teeth to grow called?

Which three colours are on the flag of Italy?

What are the names of Harry Potter's two best friends?



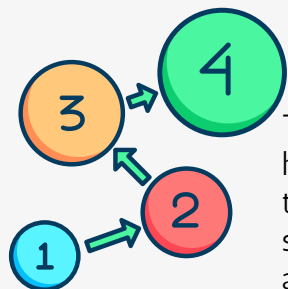
# CLASS ROOM



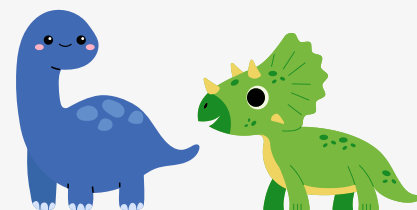
# Totara ABC

Totara students thoroughly enjoyed our first Cross Country experience. We all went out there, ran our socks off and came away feeling very proud of ourselves. Yet another school experience under our belt!

The class continues to enjoy our Math No Problem learning. Last week we were learning about time and different aspects of our days/weeks/months/years. We were also learning about sequencing and how some activities and events require certain steps, to occur in a sequence, in order to be successful.

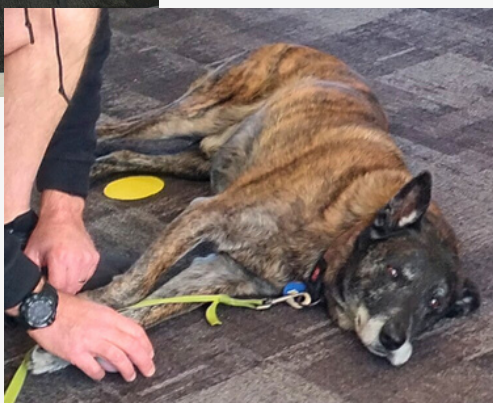


The class was given the mission to tell Mrs Empsall, step by step instructions on how to make fairy bread. After a few laughs and 'mishaps' as the instructions given to Mrs Empsall were not very clear and concise, the class completed their mission successfully. Needless to say, the class declared it was "the best math lesson EVER" as fairy bread was consumed with delight!

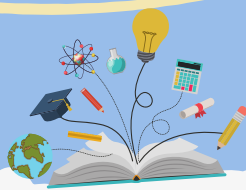


Our Dinosaur inquiry learning is in full swing, with each student creating their very own dinosaur fact book. Watch this space for our future dino publications!

We had Mrs Empsall's dog, Django, come to visit us so we could practice our dog safety learning. Django was a model student and loved showing off his ball chasing skills to the class.



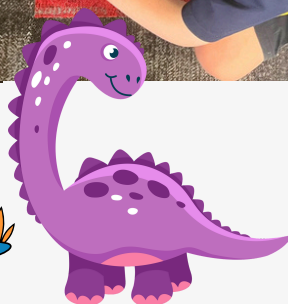
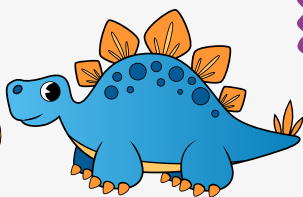
# CLASS ROOM



# Parakau

I was so proud of our class at our recent Poem Recital. They all displayed confidence performing their poem off by heart in front of a large audience!

We have been practicing drawing dinosaurs to prepare for our art for Calf Club. This time it was a Mosasaurus!



We carefully cut out shapes and used our creative minds to make this dinosaur art. Doesn't it look great?

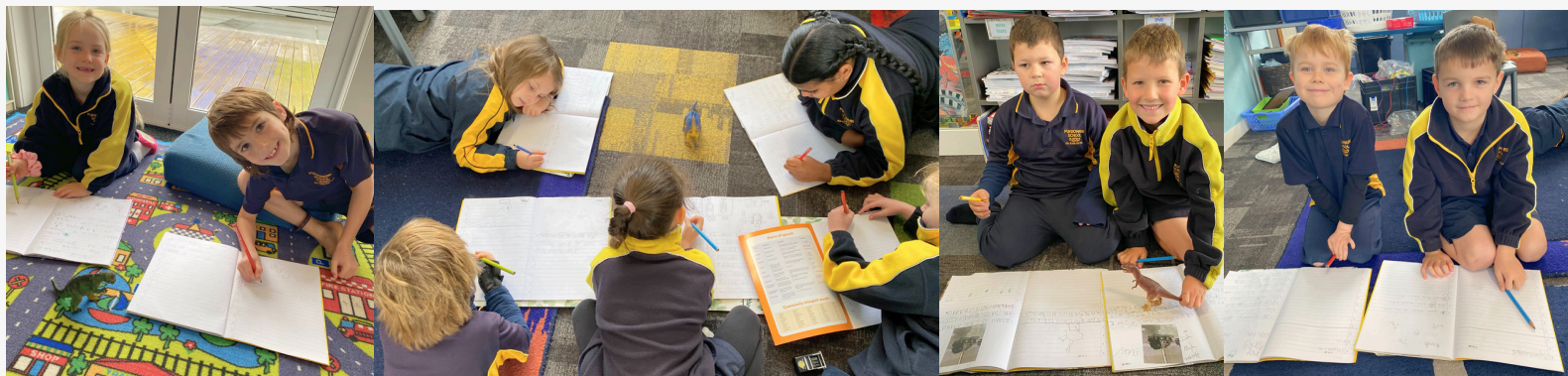




# Mokorau



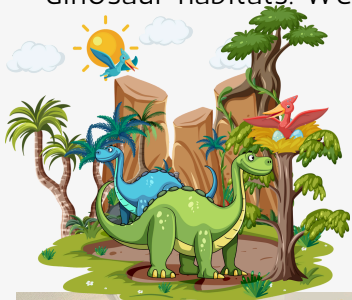
Doing buddy writing is the best- we can borrow ideas and help each other to do the best writing we can. We shared our dinosaur words and adjectives to describe a dinosaur in buddies.



Na te whakarongo me te titiro ka puta mai te korero- through looking and listening we gain wisdom.



We are paleontologists using books to research and learn about where dinosaurs lived. Come and ask us what we found about dinosaur habitats. We are experts!



Come and learn about dinosaurs by reading our facts and look at the habitats we created using chalk pastels and vivids.



# NOTICES

## Fun with Art in the School Holiday!!!

Where: Wilma's Art Studio at 18 Keogh Road, Waipipi

Time: 9 am to 3 pm

When: 22 September till 26 September 2025

Cost: \$45 for a full day, or \$25 half day (10% discount for 2 children in one family)

Ring: Wilma Suppers 021 169 2561

E-mail: [wapa@orcon.net.nz](mailto:wapa@orcon.net.nz)

Minimum of 3 bookings on the day, otherwise I have to cancel

Bookings essential, there is only limited space for 8 children (pay deposit please)

Fruits and drinks will be supplied, please bring your own lunch.

Please advise if any dietary requirements.



Monday 22 September	Tuesday 23 September	Wednesday 24 September	Thursday 25 September	Friday 26 September
- Decoupage on glass	-plaster art painting	-fabric painting	-corrugated iron painting	-fabric painting
- feed animals on farm	-crayon art	-beading	-beach painting on glass, step by step	-tube painting
- Button art	-canvas painting, mix media	-feed animals on farm	-popcorn time	-painting on canvas (sitting outside if the weather is nice and paint the farm animals)
- Shells and sand art	-games /prizes to win!	-card making and flag making	-rock painting	-play with clay
		-concrete ornament painting	-games /prizes to win!	

## GUITAR LESSONS

PUKEOWARE SCHOOL

ENQUIRE NOW!

FUN \* CREATIVE \* CONVENIENT

Learn to play your favourite songs.  
Plus opportunities to enter in music competitions and exams.  
In-school tuition Mondays.

**LEON BAKER**

021 140 8978

[leonbakerguitar@gmail.com](mailto:leonbakerguitar@gmail.com)

[www.nzmsmcounties.co.nz](http://www.nzmsmcounties.co.nz)



## AG DAY SPECIALS

Use your coupon code **CALFCLUBDAY25** instore to get:

**10% OFF**

- Selected Divine, Yours Drooly, Superior Chunky, Stockman & Paddock Dog Treats
- Selected Pig Ears Dog Treats
- Selected Yours Drooly Collars & Leads
- Selected Yours Drooly and Ouddies Dog Toys
- Shof Speedy Feeder Calf Feeder 2.5L
- Milk Bar Munch Trough
- Milligans Lamb Milk Bottle
- Halter Leading Nylon Calf
- Outback Clancy Oilskin Dog Coat

**15% OFF**

- Selected Pet Shampoo Range
- Selected Washbar Range
- Virkon S Range
- Reliance Blue Boost Electrolyte Range

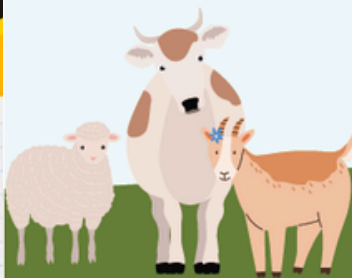
### MULTI BUY

- Milligans Classic Calf Milk Replacer 20kg 2 bags for \$240
- Reliance Calf Grower 20% 25kg 2 bags for \$98
- NRM Moozlee 20kg 2 bags for \$66
- NRM Peck'n'Lay Pellets 20kg 2 bags for \$68
- NRM Lamb Start Mix 20kg 2 bags for \$60
- McMillan Rapid Gain 20kg 2 bags for \$63
- NRM Pecking Block 2.5kg 2 blocks for \$29

1002156 | 1005678 | 1023201 | 1023209 | 1026675 | 1094691 | 1098205

**WIN!**

Tell us which school you're from to go in the draw to win a Farmlands Chilly Bin!



\*Terms and Conditions apply. Price includes GST. Prices intended for per day participants only and valid 1st July to 31st October 2025 or until stocks last. Available only at the Pukekohe Farmlands Branch.

**Farmlands**

## PIANO LESSONS

at Pukeoware School



**Builds Confidence!  
Encourages Creativity!**

- ✓ In-school lessons during school hours
- ✓ Opportunity to enter into music competitions and exams
- ✓ Learn to play your favourite song!

Now accepting enrolments

Sessions begin  
**Term 3**

**Inoshi Manatunga**

021 0855 4838

[inoshi.manatunga81@gmail.com](mailto:inoshi.manatunga81@gmail.com)

[www.nzmsmcounties.co.nz](http://www.nzmsmcounties.co.nz)

