



MONTHLY SCHOOL NEWSLETTER

27th June 2025



Principals Post

Tēnā koutou, Dzień dobry, Mālō e leilei, Madainn Mhath, Namaste, Me Wo Kye3, Greetings.

I hope this newsletter finds everyone in the best of health. Week 9 has arrived and we humbly close our Term 2 of 2025.

This term has seen productive and reflective transitions occur. Ministry directive goals such as the implementation of Structured Literacy and STAR (Stepped Attendance Response). The transitioning of assessment data and the transitioning of 5 new students to our Senior class. The outstanding learning in our Junior class and the amazing engagement in the Senior class. I have attached the expected STAR response newsletter from the Ministry for your reading.

Mid Year Reports will be sent out by the end of this term. These reports will give you a progress report on where your child is currently at using our existing assessments and 1 new assessment in the Senior class. As we transition into Ministry assessment directives, our school is slowly weaning in and from existing assessments. Overall teacher judgments (OTJ'S) are also used to determine student progress.

All teaching staff have been tirelessly upskilling themselves to ensure they are fully equipped to deliver the programmes they have planned. I would like to take this opportunity to thank my staff for their concerted efforts, for being empathetic practitioners, for being passionate educators who endeavour tirelessly to create safe and positive environments and last but certainly not the least, for inspiring a love of learning.

As we approach the holiday break, we are mindful of meetings and events that will continue in Terms 3 & 4. We have more whānau consultations as we continue to gather information for our strategic review for 2026. We have our speeches next term, We have our end of Year trips and celebrations, We have our Lamb and Calf Day and the list goes on.

A BIG thank you to our students who sat their spellathon and thank you to everyone who sponsored them. We are still collecting if you have any sponsorships to hand in. All proceeds will go to the PTA to support our end of year events or other needs of our students.

Nāku noa iti,
(Yours sincerely)
Whaea Vix



Puanga mahi tahi, Puanga mahi rau.
Rapua he āwhina i te wā o te kore,
kei pōhauhau.

Puanga does not work alone.
Seek assistance when you are unsure.



This whakatauki talks about a collaborative approach. Working together and knowing that it is ok to seek help and advice if we are unsure of anything. Puanga is known to guide Matariki into the Māori New Year! Puanga brought out the best in our Senior students as they collaboratively worked together toward a common goal, allowing Puanga to reveal their hidden strengths and skills. Happily setting up tables, making centrepieces and folding napkins.



Many iwi māori follow the Māramataka (Māori calendar) which is based on the lunar system, hence the beginning of the New Year during this time. There are 3 main principles:

★ Honoring those who have passed away since the last rising of Puanga or Matariki.

★ Gathering together, giving thanks for what is currently held, and enjoying the company of whānau (family) and friends.

★ Focuses on anticipation and planning for the new year, setting intentions, and looking forward to the opportunities and possibilities that lie ahead.



Our elders brave the cold.



Matua Tyrece welcomes our elders.



Matua Rū of Ngati Maru guides the community in acknowledging Puanga.



Matua Tyrece warriors the wrath of Taranaki weather to ensure our elders are honoured.



We got to experience the elements of a Taranaki day as we acknowledged Puanga. An absolute honour to have our community elders attend and experience the experience. We salute the project of 'Te Tomakanga ki te Ao Mārama'-Gateway to Understanding. Next time we will ask Matua Rū to translate his beautiful speech so that we are all in the Gateway of Understanding. Our tamariki (children) were the reason for all we did. Our tomorrow, our future, our reason.

Despite the weather our elders receive a traditional welcome and are guided to their seats by Matua Tyrece. Our Council await as waiters and waitresses for each table.



'The Vegan Maara' a non-fiction story written by Te Pare Wiafe.

Vegan people eat veggies such as broccoli, cauliflower, carrots and cabbage. We are growing all these types of veggies in our maara. These veggies are healthy for you and good for the environment. I love eating these types of veggies. I get more energy and feel healthier. I can't wait for them to grow in our maara, and be ready to harvest.

One day I was at school, I was planting seeds with my class to grow in the maara. The plants that we planted were cabbage, lettuce, cauliflower, beetroot, carrots and potatoes. We also planted flowers. We put them in a koru garden. The maara was made by the kids at Ratapiko from last year and Matua Simon created the koru with the dirt.

The best thing about the maara is the fun we have planting. I feel happy while planting. I also like the fact that how even though you get dirty it is fun! It's even better how you get yummy fruit, veggies or beautiful flowers. What's your favourite fruit or veggie?

The maara would look better if we took better care of the things we grow. The more we care the more yummy veggies and fruits we have. My reason for why we have to take better care of our maara, is that it keeps it looking good and our food tastes yummier than the shop! I think the maara is a beautiful, majestic, gorgeous, vibrant, elegant and pretty place to hang out. I like its green vibrant colour. In the afternoon it looks the best. Its autumn colours look beautiful and it's one of the best times to be there. What's your favourite thing about Autumn?

'THE CANDY MAARA' A NON-FICTION STORY WRITTEN BY AUBREE GALLICHAN

Once upon a time in candy-zealand north-candy there was a school called ratapiko it had a scrumptious maara that had lime gummy-worm grass, rock candy trees, melted kitkat dirt, sugar glass greenhouse, life saver tires, wafer compost boxes and a gingerbread man scarecrow. It is the best place to go when you are allowed sugar and you'll be bouncing everywhere.

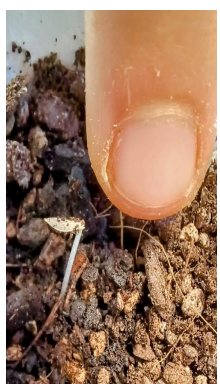
It can provide any candy you want to plant in the melted kitkat dirt, it can give you the sweetest or sourest results, plant sour seeds, its sour! Plant sweet seeds, its sweet! It's the greatest place to plant sweet or sour seeds! But the best part is that if you plant both types of seeds you will get the ULTIMATE FLAVOUR EVER! Because Think about it, two different types of candies, your taste buds would EXPLODE!!! With flavors. I would try to make it when im older for some reason? I don't really know why, I think it's the sound of two flavors. it sounds yummy.!

It can be used for birthdays, partys, friends house, sharing, gift bags and special occasions. It can have sugar on it or sour powder to make it sour. Candy can be used for people who need sugar to give them energy like the movie paul blart mall cop, he needs sugar to stay awake or he sleeps until someone gives him something with sugar like candy.

Whanaungatanga ki te Taiao Our Relationship with the Environment

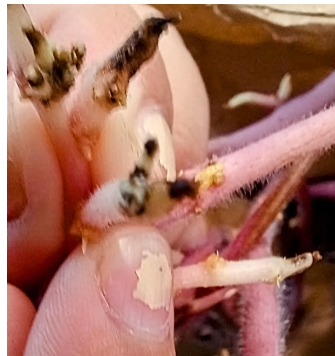
This Term, the Seniors have been challenging their understandings and misunderstandings surrounding the seasons; including planetary motion, plant growth, survival requirements and transplantation. We explored Maramataka and studied seed types in order to germinate crops and fill the maara with food.

Photos by Journey



Mr Jeffreys...SENIOR SCIENCE

We found many seeds stored away in class, but also discovered a long lost bag of seed potatoes that had grown to do some exploring of their own.





BRONZE - This beginning stage of leadership holistically sits under the guardianship of Papatūānuku (female deity) and Tane Mahuta (male deity). Papatūānuku and Tane Mahuta both pertain to the land, causing and adhering to foundational skills, growth, stability, the idea, the thought, the initiative. Every student on the Council that holds a position is entitled to participate, however the Year 7's have higher expectations and levels to achieve. Please bear with our Leadership Programme as they begin to learn their roles and responsibilities. There are 3 tiers of cohorts within the programme.

Year 7-8 Council

Co-Opt Council

Mid Rep

COUNCIL CONCERNS:

Some great initiatives and conduct these past 2 weeks and some not so great.

SWEARING at school has heightened and we at Ratapiko have ZERO tolerance to this choice of language. Unfortunately, our leaders of tomorrow are still learning to collaborate and learning to agree to disagree. This has resorted to the use of non acceptable language at school. Please help us to stamp these words being used. Continued use by the same person will receive consequences.

TEASING at school has heightened as our students begin to grow into teenagers, vulnerable and emotional feelings start overriding their ability to make fair and caring decisions. Please help us teach our students that friends are forever, one day we like each others company and other days we like to connect with someone else. This does not mean that we are not friends, it just means we are having space and they are still friends. Teasing and cold shouldering whether it is meant intentionally or unintentionally can lead to outbreaks and our whole school whānau unit becomes unbalanced.

Teasing occurs when it is between equals, bullying occurs when it is unequal. We have ZERO TOLERANCE to teasing and bullying if used in a hurtful way. Teasing leads to anxiety and depression. Teasing also has the potential to move to bullying. Repeated acts of teasing by the same person will receive consequences.

It is understood that teasing can be playful, we would like to teach our tamariki the difference between the two.

Opening of the Tomokanga (Gateway) at Kaimata School.

Whaea Vix has been invited to the Opening of the Tomokanga at Kaimata School on Friday 27th June. Whaea Vix will be taking the Council Chairman- Journey and our Kaikōrero (Speaker) Lennox with her to this auspicious event.

Student Council Report- Journey and Aubree

CHAIRMAN'S REPORT

Firstly, I'd like to thank everyone who voted for me. It's a real honor to be the chairman.

A big thank you to our seniors who were serving the kaumatua. We felt like we were rushing but the whānau like Rachels nana, Mrs Calender and others said that we were doing an awesome job

Thank you to all of our kaumatua for being so kind as we rushed to get your meals and we were learning to be waiters and waitresses.

We got a little mixed up doing the hot drink orders and we are thankful that Whaea Calla helped with the hot drinks.

This week has been a hard week but a good week. These past few days has been hard for everyone to agree with each others opinions but we've done better! Good job seniors council keep it up! Thank you to all our Teachers who are helping us every day!



REPORT ABSENCES FROM SCHOOL.

Either...

- Ring School Office.
- FB message your child's Teacher.
- Email Admin Office, not the Principal.
admin@ratapiko.school.nz

MEDICATION ADMINISTRATION...You MUST

- Sign a consent form at the Office.
- Medication is in a secure container.
- As we do not have a school nurse or a full time Administrator, please support your child's Teacher to administer.

2025 PHOTOGRAPHY SHOWCASE

TE KĀHUI AKO O TE KÓHANGA MOA

10 – 14
SEPTEMBER 2025

PRIZEGIVING:
11 SEPTEMBER (EVENING)

INGLEWOOD ROTARY HALL
13 MOA STREET, INGLEWOOD



EXPERIENCE OUR WHENUA
THROUGH THE EYES OF THE
NEXT GENERATION.



All students will have the opportunity to enter this year.

Year 7's and Yr 8's will present differently. This is a good opportunity for our tamariki to have a digital learning experience. Your Teacher will send out a newsletter explaining your child's goals and expectations. It is hopeful for each student has access to a digital advice at home.

Community Term 2 Happenings...

Ratapiko Hall Update!



After a few months of being out of action, our hall is now available for hireage again. A big THANK YOU to the Toi Foundation for contributing to our double glazed windows throughout the hall, our new tables, 50 x new padded chairs and new lino in the kitchen. A big THANKS to TET (Taranaki Electricity Trust). Accolades to 'Pete the Builder' for a great job installing them.

To Kay and Jason Grigg for painting the window frames after installation, to Cheryl Grigg, Ethan and Rachel Marriner for general cleaning the aftermath of all jobs done in the hall. Our next step is the to paint the exterior of our hall. Our hall has catered and looked after many people over the years.

The Ratapiko Hall Community are holding a fundraiser Quiz night to assist in funding to paint our hall.

We invite you to get a team together for Friday 11th July at 7pm.

A flyer is attached to this newsletter! Come along and let's have some fun!

Ratapiko Hall AGM will be held on Sunday 3rd August 1pm at RATAPIKO HALL.

Come along and see you all at our Quiz night!



Reflection...Puanga brings us together to reflect and helps us build tomorrow. Lovely lunch with these Ratapiko School leaders of the past.

Community Term 2 Happenings...



Tēnā koutou katoa Matua Kingi is hosting an Open Mic night this Friday 27th June. Open Mic had started out as a way for bands or duets, or individuals in Schools to have a go at singing or performing in front of people to now being a platform for everyone to perform. There is no cost to the night, however it is asked that people bring a plate preferably with food on it, coffee and tea will be provided.

Welcome to

Ratapiko School

This playground is for everyone to enjoy. There is an element of risk in all play. Parents and caregivers are respectfully asked to supervise their children at all times when using this playground

- This playground has been designed for children aged 5 - 12 years of age
- Please respect other users - no pushing, shoving or throwing soft fill
- Always use the play equipment as intended
- Wear proper footwear
- Be aware of potential hazards such as draw strings and hoods on clothing
- Do not wear bike helmets when playing on this playground



Don't Litter



No Dogs



No Glass or Alcohol



No Smoking or Vaping

EMERGENCY DETAILS
You are here: (4 Ratapiko Road)
Phone: 111 IN CASE OF EMERGENCY OR SERIOUS INJURY
Phone or email: (06 762 4818 or email admin@ratapiko.school.nz) to advise of any maintenance requirements



ADMIN- STAR-Stepped Response Attendance

Ministry toughen up on Attendance. Please keep the school notified on all absences. Here are 4 ways of notifying:

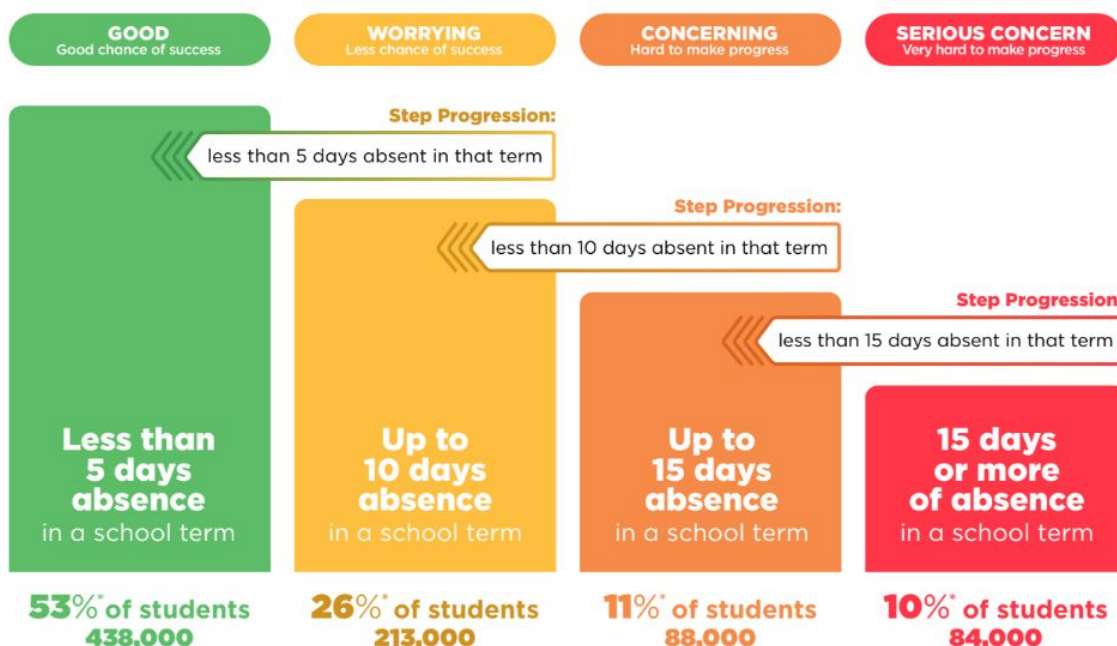
- Face to face
- Phone call to Office
- Email to Office
- FB messenger to your Teacher.

Stepped Attendance Response – STAR

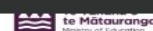


Responding to all absences

The Government's target is for **80% of students to attend regularly**, that is to attend school more than **90% of the time**.



Stepped Attendance Response – STAR



Responding to all absences

The Stepped Attendance Response (STAR) sets expectations for school, student, parent/guardian, Ministry of Education and broader system responses to student absence.

It provides a series of activities that should be considered when students meet absence thresholds. The actions taken will be tailored to the reasons for absence, for example a student with a chronic illness will require tailored supports for their education.

The activities include considering prosecution for absences if appropriate support is offered and not taken up.

Day-to-day operations

Schools:

- Assess attendance history of new students and share attendance history when students move between schools.
- Survey students and parents to support effective teaching practice and engagement
- School Leadership and Boards actively minimise disruptions to the school day and week e.g. use callback days, parent teacher meetings held after school
- Support students to continue learning if unable to attend school every day, including using Ministry approved well-being or transitional plans, or health schools where appropriate.

Ministry of Education:

- Convene termly meetings for leaders from local schools and relevant agencies to discuss students with serious attendance concerns where a multi-agency response is required
- Prepares templated materials for schools to adapt and use to promote or respond to attendance
- Provide attendance data reports for individual schools and Kahui Ako
- Provide schools with a regularly updated list of agencies that schools can work with to support students
- Contract supports and services that are effective at returning students to regular attendance (e.g. Attendance Service)

Less than 5 days absence in a school term

PARENTS/GUARDIANS

- Ensure student attends every day they are able
- Reinforce good attendance habits
- Support other parents to reinforce good attendance habits
- Open communication with school
- Follow school attendance management plan and associated policies and processes

SCHOOLS

- Clear communication to parents on attendance expectations on enrolment, at the start of school year, and each term
- Communicate to parents what steps the school will take in the event their child is absent from school
- Communicate good attendance habits to students and parents
- Monitor attendance
- Communicate to parents about every absence
- Maintain contact details of parents
- Provide students with regular updates on their own attendance
- Report regularly to parents on attendance of their child
- Support students getting to school
- Use school level approaches to promote good social and learning environment

MINISTRY OF EDUCATION

- Monitor that schools have their attendance policy and attendance management plan on website and it is reviewed as required
- Monitor aggregate data and attendance patterns to identify challenges and opportunities at regional and national levels
- Maintain regular contact with schools and support policy development and interventions/supports
- Support schools to be inclusive and safe

53% of students. 438,000

Up to 10 days absence in a school term

PARENTS/GUARDIANS

- Return student to regular attendance
- Contact school to discuss reasons for absence
- Support student to catch up on missed learning
- Engage in supports offered

SCHOOLS

- Send formal notification and contact parent/guardian to discuss reasons for absence
- Support students to catch up on missed learning where required
- Use in-school resources as appropriate to remove barriers e.g. counselor, 2nd hand uniform shop, PB4L.

MINISTRY OF EDUCATION

- Support school with formal notification where required

26% of students. 213,000



STAR-Stepped Response Attendance

Responding to all absences

The Stepped Attendance Response (STAR) sets expectations for school, student, parent/guardian, Ministry of Education and broader system responses to student absence.

It provides a series of activities that should be considered when students meet absence thresholds. The actions taken will be tailored to the reasons for absence, for example a student with a chronic illness will require tailored supports for their education.

The activities include considering prosecution for absences if appropriate support is offered and not taken up.

Day-to-day operations

Schools:

- Assess attendance history of new students and share attendance history when students move between schools.
- Survey students and parents to support effective teaching practice and engagement
- School Leadership and Boards actively minimise disruptions to the school day and week e.g. use callback days, parent teacher meetings held after school
- Support students to continue learning if unable to attend school every day, including using Ministry approved well-being or transitional plans, or health schools where appropriate.

Ministry of Education:

- Convene termly meetings for leaders from local schools and relevant agencies to discuss students with serious attendance concerns where a multi-agency response is required
- Prepares templated materials for schools to adapt and use to promote or respond to attendance
- Provide attendance data reports for individual schools and Kāhui Ako
- Provide schools with a regularly updated list of agencies that schools can work with to support students
- Contract supports and services that are effective at returning students to regular attendance (e.g. Attendance Service)

Less than 5 days absence in a school term

PARENTS/GUARDIANS

- Ensure student attends every day they are able
- Reinforce good attendance habits
- Support other parents to reinforce good attendance habits
- Open communication with school
- Follow school attendance management plan and associated policies and processes

SCHOOLS

- Clear communication to parents on attendance expectations on enrolment, at the start of school year, and each term
- Communicate to parents what steps the school will take in the event their child is absent from school
- Communicate good attendance habits to students and parents
- Monitor attendance
- Communicate to parents about every absence
- Maintain contact details of parents
- Provide students with regular updates on their own attendance
- Report regularly to parents on attendance of their child
- Support students getting to school
- Use school level approaches to promote good social and learning environment

MINISTRY OF EDUCATION

- Monitor that schools have their attendance policy and attendance management plan on website and it is reviewed as required
- Monitor aggregate data and attendance patterns to identify challenges and opportunities at regional and national levels
- Maintain regular contact with schools and support policy development and interventions/supports
- Support schools to be inclusive and safe

53% of students. 438,000

Up to 10 days absence in a school term

PARENTS/GUARDIANS

- Return student to regular attendance
- Contact school to discuss reasons for absence
- Support student to catch up on missed learning
- Engage in supports offered

SCHOOLS

- Send formal notification and contact parent/guardian to discuss reasons for absence
- Support students to catch up missed learning where required
- Use in-school resources as appropriate to remove barriers e.g. counselor, 2nd hand uniform shop, PB4L

MINISTRY OF EDUCATION

- Support school with formal notification where required



26% of students. 213,000

Principal Message...

Our responsibility is to ensure our children attend school everyday. All absences need to be communicated at the earliest convenience, so that your Teacher can plan accordingly and mark attendance register correctly. We have provided as many platforms as we can to accommodate all our needs. Please ensure that communication is made as reasonably possible.

Any queries or concerns, please contact your child's Teacher at the first instance.

Acknowledgement Page!



Thank you to the Engine Room- The aroma sailed through the air!



Mīharo! (Amazing) poetry from our Matariki Junior stars!



A big thanks to our Puanga superstars! All our tamariki who have battled their schedule to fit practise in. Half an hour each week is all they had. Some students gave up their intervals!



Lincoln our Mid Leadership Rep showed his leadership skills through learning and hospitality during our Kaumatua Luncheon.



Our very own Council Angels that will support our Student Council as they navigate through their Leadership Programme. Our Angels kept our Performing Arts bracket going as they lead the group in the absence of the older Council during our Kaumatua Luncheon. A special mention to Noelle, who also helped keep the home fires burning.



Kahui Āko Sports

A successful day with the Kahui Āko Football at Karo Park on Tuesday 24th June. We managed to enter 2 teams in the social sector - Ratapiko Kowhai (Yr 5 & 6) with a few of our Yr 4's in this team, and Ratapiko Kakariki (Yr 7 & 8) a couple of our Yr 6's helped to make up the numbers. It was a great day and all our tamariki did so well, they gave their absolute best and had fun!



Thank you Parents/Whānau for contributing to our Puanga celebrations in every way whether that was sending a plate of kai or coming to support our children, without your input these events could not go ahead.

Also a big thank you, for the donation to the PTA, the Spellathon Sponsorship money that was raised will be going towards the end of year activities for the whole school.

Lastly “Save the Date” below we are planning Calf and Lamb Day for the of Term 4!

Happy School Holidays see you all in Term 3!

**Ngā mihi nui
Ratapiko PTA**

Save the Date

**Calf & Lamb Day
Saturday 11th
October**



Need to check out our Policies?

School Docs

username: ratapiko

password: ratapiko 4390



Website under reconstruction. Not too long!

eieio.co.nz

LINDA MCINTYRE
Rural & Lifestyle Sales

M 027 282 8561
O (06) 756 8889
E linda.mcintyre@eieio.co.nz
58 Rata Street | Inglewood 4330

TRUSTED IN TARANAKI SINCE 1912

McDonald REAL ESTATE

INGLEWOOD PANEL & PAINT

Inglewood Panel And Paint
Meeting People By Accident

Call Us: 06 756 6177
Monday - Thursday 8.00am - 4.30pm Friday 8.00am - 4.00pm

Contact Us Today!

- 06 762 4818
- admin@ratapiko.school.nz
- www.ratapiko.school.nz
- 4 Ratapiko Road, RD 10 Inglewood 4390



Ratapiko Primary School
Year 0 - 8

Testimonial

"This school really helps my Adhd child develop, both in terms of academics and character. So my message to parents, don't hesitate to send your child to school here!"

(Student Parent)

"I feel that the teachers here are very good at guiding me, learning becomes more fun because the methods they use make me never feel bored"

(Student)

RATAPIKO SCHOOL

Ratapiko School
Year 0 - 8

Opening Registration 2025

Join a caring family environment!

Victoria Greening-Winiata

Principal/Tumuaki

Ratapiko School
4 Ratapiko Rd,
Inglewood 4390
Ph : 06 762 4818