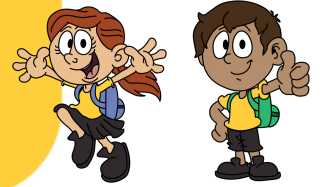




LICHFIELD SCHOOL
— EST. 1884 —

Learning - Today, Tomorrow, Always!
Hei akoranga - Inaianei, Apopo, Mo ake tonu atu!



Lichfield Community Newsletter

Published by Lichfield School every second Monday

Circulation: 340

This NEWSLETTER is delivered to all RD 2 Householders, FREE.

Our grateful thanks to
KAY HUMPHRIES TRAVEL
Phone KAY—883 7368



Week 8 Term 3

Monday, 4th September 2023

Nga mihi nui kia koutou katoa,
The warmer spring days last week certainly made up for the frosty mornings. Our students certainly enjoyed playing and learning outdoors. Scott from WaiBop Football returned to complete the second series of skills sessions for the classes and it was great to see the Lichfield students getting fully involved, practising our school values and key competencies within a Physical Education context.

Recently, we also had the pleasure of having Vicki from Zero Waste Education teach lessons on reducing waste with all of the classes. These lessons were provided free to our school by the South Waikato District Council. We can see how worthwhile they were for our students and teachers, with many of our classes taking the learning further by continuing on with lessons based around this theme.

Courtesy of Storylines Trust, we also had the pleasure of having two of New Zealand's great authors visit us. Kyle Mewburn and Graci Kim shared some of their experiences and inspired our learners with their presentations.

We always appreciate the learning opportunities that are provided by these kinds of external guests, organisations and their funders, as we know they are so beneficial to our students and staff.

Our charity event for the term arrived just in time to brighten up our mood after the wet winter weather. It was wonderful to see all the effort that was put into dressing up for the Cancer Society Daffodil Day, with lots of yellow, gold and orange on display. Our school raised \$202.50 for the Cancer Society through the coin trail and sausage sizzle. A great effort from our students and their families.

Don't forget to book in for the Student Led Conferences that are being held this week. This is your child's opportunity to take greater ownership, responsibility and agency in their learning. We know that when children take greater ownership in their learning that they achieve higher levels of success. If you would like to have a meeting between yourself and your child's teacher, you are welcome to arrange this directly with the teacher at any point during the year.

This week Room 5, Ruma Tipu, Ruma Kakano and their Putaruru College leaders will be visiting the Ngatira Marae. We wish them well on their trip and look forward to hearing about it.

Hei konei ra
Owen Corlett

Want to receive your newsletter by email?

Email us and we will add you to our list: office@lichfield.school.nz
All newsletters are published on our website:
www.lichfield.school.nz

Follow us on Facebook



Notable Quotes:

"Maturity is the ability to think, speak and act your feelings within the bounds of dignity."

Samuel Ullman

"Spoon feeding, in the long run teaches us nothing but the shape of the spoon."

E.M. Forster

"When it comes to chocolate, resistance is futile."

Regina Brett

Maths at Home

Ideas for using newspapers and flyers

Junior scavenger hunt

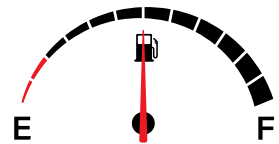
Spot the shape (Geometry)

- o Let's find rectangles/triangles/circles in the paper.
- o What kind of things are rectangles (TVs, boxes)
- o What kind of things are circles? (clocks, watches, balls)



Courtesy of: nzmaths.co.nz

Lichfield School Attendance Rate tracker (year to date)



56.4% of students have attendance rates of greater than 90%
(48 out of 110 students have attendance rates of 90% or less)

Lichfield Poultry Farm Fresh Free-Range Eggs



Shop open 7 days 8am – 6pm

2923 State Highway 1, Lichfield

Maria & Jim Paterson
Ph 07 883 6813

Van Der Heyden Contracting

Round Bale Silage Wrapping
Raking
Mowing
Hay Baling (Big Rounds and Small Squares)



Lichfield and surrounding area
Telephone: Antony 07 883 6761 or 027 671 2706

Storylines Trust Visit

We had two special guest authors Kyle Mewburn and Graci Kim join us and share their amazing stories and journeys. All the children came out very inspired and had these words to name a few to describe their experience; Incredible, interesting, funny, cool, amazing and inspired.



Kyle Mewburn is one of New Zealand's most eclectic and prolific writers. Her 50+ titles have been published in 27 countries and won numerous awards including New Zealand Children's Book of the Year. Her work ranges from multi-layered picture books (Old Hu-hu, Kiss!Kiss! Yuck!Yuck! and Hill & Hole) to gross, laugh-out-loud junior fiction (Dragon Knight and Dinosaur Rescue series).



Graci Kim is the award-winning and New York Times bestselling author of The Last Fallen Star, The Last Fallen Moon, and The Last Fallen Realm. As featured in TIME Magazine for Kids, and dubbed a "sparkling yarn" by Entertainment Weekly, the Korean mythology-inspired trilogy has been optioned by the Disney Channel for a television series, and is being translated into multiple languages. It was named a 2021 Goodreads Choice Award Nominee for Best Children's Book, an Amazon Best Book, an Indigo Best Book, a Barnes & Noble Young Reader Pick, and a Whitcoulls Kids Top 50. In 2022, Graci was awarded the Sir Julius Vogel Award for Best New Talent.



Room 2 got to catch up with Kyle, here are some of their stories about the visit...

I liked the lady's books.

The crazy author was nice and funny. She is cool and her books are too. She told us about her books and how she wrote them and other stuff about her.

There was a lady who came to our school. She told us all about her. She was funny. She was a good writer. She has written 56 books which are about animals. She showed us all of her books and she even read some.

Connor

The lady was nice and funny. She writes books about animals. I enjoyed it.

Heath

Samuel

The author was happy. We had to be in the hall to see her. She looked like she was crazy. The author was funny. The author has lots of books, the oldest book that she wrote is 20 years old. The author is amazing. She was naughty at school but she doesn't go to school now. I'm writing about the author who shared her ideas with us.

Ben

Regan

What's On

Regular School Events

Bible in Schools: Friday 10:55am

House Time: Friday 11:45am

Assembly (All welcome): Bi-weekly Friday 2:15pm

Toasty Tuesday's

Sausage Sizzle: Friday's

September

Tuesday 5th

Board Meeting 6.30pm

Student Led Conferences

Wednesday 6th

Student Led Conferences

Thursday 7th

Marae Trip - Room 1 & 5

Friday 8th

School Assembly 2.15pm

Saturday 16th

LSSG Hoe Down



Nga Kupu o te Wiki

Ko te reo he taonga

Here's this week's kupu to learn with your children:

nui- big, enough

Ka nui tēnā.

That's enough.

He tino nui te mahau o tōna whare.

The deck at her house is very big.



WELCOME TO OUR NEWEST STUDENT

Christian (Bob) Cordonner

Bob has joined us in Room 1 - Kakano. He has joined his big sister at school and has already made some friends. Bob likes playing in the sandpit and drawing. His favourite colour is blue.

All the best with your learning journey at Lichfield School Bob.



Lichfield Poultry Farm Fresh Free-Range Eggs

Shop open 7 days 8am – 6pm

2923 State Highway 1, Lichfield

Maria & Jim Paterson

Ph 07 883 6813

Van Der Heyden Contracting

Round Bale Silage

Wrapping

Raking

Mowing

Hay Baling (Big Rounds and Small Squares)

Lichfield and surrounding area

Telephone: Antony 07 883 6761 or 027 671 2706





Daffodil Day



Room 2 stories continued...

On Wednesday in the afternoon Room 2 saw Kyle the writer. She was extremely funny. She told us about writing because it's another thing to do every day. She is different to any other writer. She's funny, happy and incredible. She shared her book with us.

Milly

Yesterday an old author came to read some books to Lichfield School. She read the bear next door and duck stuck. She was silly and a great author. She stopped reading one day and imagined that a duck made a book and thought wouldn't that be funny. (and that's what she did!)

Tuki

On Wednesday in the afternoon Kyle Mewburn came to Lichfield School and Room 2 saw her. She was funny and kind. She was also silly. She was also exciting to see. It was fun to see her. She is an author. She has written about 65 books.

Floyd



Lichfield School Support Group

The LSSG is a group of dedicated parents who run fundraising and community building events throughout the year.

Our next meeting is on Monday 30th October at 3.00pm in the school hall. All welcome.

Toasty Tuesday's are back! \$2.00 each for a cheese toasty. Students are welcome to use their sausage sizzle cards to purchase them.

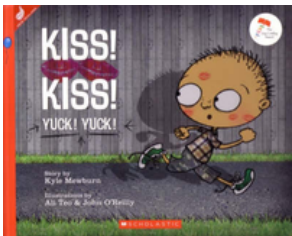


LSSG: Calf Donation Scheme



It is time to start thinking about whether or not you are able to support our school by donating a calf to the LSSG calf scheme.

If you would like to donate a calf, **please contact: Matthew Haigh on 07 883 3269 or 027 475 8960**



Lichfield School Board of Trustees

At this weeks board meeting we will be deciding on the number of spaces available for out of zone enrolments in 2024. We will receive a report on the science and technology curriculums, as well as updates on building projects.

Our next Board meeting will be held on **Tuesday, 5th September.**

The Lichfield Board trustees are: Rodney De Vorms, Sarah Beaven, Vanessa Macneil, Thomas Scheres, Jonathon Cole, Ida Cloete and Owen Corlett.

Laser Plumbing Putaruru are proud to be sponsoring **Lichfield Primary School** with our 'School Partnership Programme'

With any job completed by Laser Plumbing Putaruru 5% of the total value will be donated to LICHFIELD PRIMARY SCHOOL

This promotion is open to students, board of trustees, staff, and friends and family of LICHFIELD PRIMARY SCHOOL

Quote code **LPLICH23** when booking in your next job.



Plumbing Laser Putaruru

24/7 Callout Service Available

07 883 7261

putaruru@laserplumbing.co.nz

2 Elizabeth Street, Matamata

*Terms and conditions apply.



Lichfield Poultry Farm Fresh Free-Range Eggs

Shop open 7 days 8am – 6pm

2923 State Highway 1, Lichfield

Maria & Jim Paterson

Ph 07 883 6813

Van Der Heyden Contracting

Round Bale Silage

Wrapping

Raking

Mowing

Hay Baling (Big Rounds and Small Squares)

Lichfield and surrounding area

Telephone: Antony 07 883 6761 or 027 671 2706



PILOTT AUTOMOTIVE

7 Mannering Street, Tokoroa
Ph: 886 9687 Mobile 027 284 0204



Authorised Parts
and
Service Agents



SHEEPSKIN PLUS

Your Local Store For:
Phone 07 883 6898
2881 State Highway 1
Lichfield

Slippers
Possum Merino Knitwear
Sheepskins
and Gifts

DIGGER HIRE



Owner operator
20 years experience
13 tonne tilt bucket
Agriculture work, building sites, etc
Give Marty Van Heuven a ring for any
enquiries
022 077 1896

South Waikato Waste Disposal

Septic Tanks
Cattle Underpasses
Grease Traps

Phone (07) 883 7101 or
(027) 495 1905

Have your septic tank emptied, mention
this advertisement and we will donate
\$20 to Lichfield School!



Mark Cooney CONSTRUCTION

New Builds - Renovations - Alterations

Call for a free quote today

021 838 473

Native Trees for Sale

Suitable for Farm Planting and
Lifestyle Blocks

50c from every tree purchased in the RD2
area will be donated to the school

\$2.50 each

Manuka Kanuka

\$5 each

Kowhai	Ake Ake
Mahoe	Wineberry
Five Finger	Koromiko
Lancewood	Toetoe
Pittosporum	Karaka
Ribbonwood	Karamu
Totara	Rangiora
Cabbage tree	Kahikatea
Flax	Rewarewa

Text or Phone Colin
027 279 0365

Habraken Builders LTD

For all your building needs:

Cowsheds

Barns

Implement Sheds

Feedpads & Silage Bunkers

Concrete Prep & Place

Alterations and Additions



Mark 027 247 7351

habrakenbuilders@hotmail.co.nz

NATURAL SPREADERS LTD

"We pump, stir and desludge effluent ponds!"

Phone Wayne: 07 886 6667 or 027 728 8482



Personalised Innovative Dairy Solutions

Ziggy & Chrissy Burch

8243 State Highway 27, Hinuera, Matamata

2251 State Highway 1, Putaruru

Ziggy: 021 394 555 | Chrissy: 0275 394 555

info@betamilking.co.nz www.betamilking.co.nz



Lee-Ann Stuart

Residential Sales Consultant

M 027 270 7792 P 07 880 9762

leeann.stuart@harcourts.co.nz

Kevin Deane Real Estate (Cambridge) Ltd

Licensed Agent REAA 2008

28a Arawa Street,
Matamata 3400

www.kdre.co.nz

Harcourts



Kia ora from Kirsty, Luxmi, Shona, Ashleigh, Olivia, Ida, Jess, Petalla, Debbie, Kim, Shiree, Dianne, Andrea, Kightley, Rick and Owen.