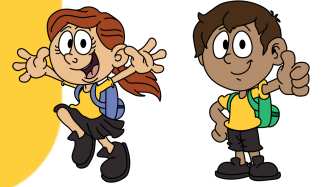




LICHFIELD SCHOOL
— EST. 1884 —

Learning - Today, Tomorrow, Always!
Hei akoranga - Inaianei, Apopo, Mo ake tonu atu!



Lichfield Community Newsletter

Published by Lichfield School every second Monday

Circulation: 340

This NEWSLETTER is delivered to all RD 2 Householders, FREE.

Our grateful thanks to
KAY HUMPHRIES TRAVEL
Phone KAY—883 7368



Want to receive your newsletter by email?

Email us and we will add you to our list: office@lichfield.school.nz
All newsletters are published on our website:
www.lichfield.school.nz

Follow us on Facebook



Notable Quotes:

"If we all threw our problems in a pile and saw everyone else's, we'd grab ours back."

Regina Brett

"How can it be, in a world where half the things a man knows at 20 are no longer true at 40... and half the things he knows at 40 hadn't been discovered when he was 20?"

Arthur C. Clarke

Maths at Home

Ideas for using newspapers and flyers

Junior scavenger hunt

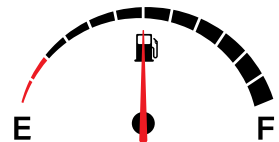
Spot the weather (Statistics and Measurement)

- o Where will it be a sunny/rainy/cloudy day tomorrow?
- o Where do we live?
- o What will the weather be like?
- o What will the temperature be? Is that warm?



Courtesy of: nzmaths.co.nz

Lichfield School Attendance Rate tracker (year to date)



59.5% of students have attendance rates of greater than 90%
(56 out of 111 students have attendance rates of 90% or less)

Lichfield Poultry Farm Fresh Free-Range Eggs

Shop open 7 days 8am – 6pm

2923 State Highway 1, Lichfield

Maria & Jim Paterson
Ph 07 883 6813



Van Der Heyden Contracting

Round Bale Silage Wrapping
Raking
Mowing
Hay Baling (Big Rounds and Small Squares)

Lichfield and surrounding area
Telephone: Antony 07 883 6761 or 027 671 2706



Events on these School Holidays

There are a lot of events happening these school holidays, here are a few you might like to do with your families.

SWSEC PRESENTS SCHOOL HOLIDAY PROGRAMME
AGES 8YS-16YRS

\$5 PER PERSON PER DAY

MOVIES • SPORTS GAMES • CHALLENGES
LOADS OF FUN!

EACH DAY RUNS FROM 10AM-2PM
(BRING A PACKED LUNCH AND WATER BOTTLE)

NO REGISTRATION NEEDED YOU CAN TURN UP ON THE DAY!

MONDAY 25 SEP
WEDNESDAY 27 SEP
MONDAY 2 OCT
WEDNESDAY 4 OCT

Join us and dive into the excitement with the fastest growing sport!!
All levels welcome.

25 MOSSOP ROAD, TOKOROA

FOR MORE INFO PH: 07 885 1095 EMAIL: SPORTSANDEVENTS@SOUTHWAIKATO.GOVT.NZ

PICKLEBALL FAMILY NIGHT
AT THE SOUTH WAIKATO SPORTS AND EVENT CENTRE

FRIDAY, SEPTEMBER 22
Time: 5pm - 7pm

FREE EVENT!!
CHILDREN 8YRS AND UNDER MUST BE ACCOMPANIED BY AN ADULT

- Basketball
- Table Tennis
- Much more

25 MOSSOP ROAD, TOKOROA

FOR MORE INFO PH: 07 885 1095 EMAIL: SPORTSANDEVENTS@SOUTHWAIKATO.GOVT.NZ

SWSEC SPORTS TASTER SESSIONS TERM 3

AGES 8YRS-16YRS
\$2 PER PERSON PER SESSION

FRIDAY 29 SEPTEMBER
10AM-12PM: PICKLEBALL
1PM-3PM: VOLLEYBALL

FRIDAY 6 OCTOBER
10AM-12PM: VOLLEYBALL
1PM-3PM: PICKLEBALL

BOOKINGS ARE WELCOME BUT NOT ESSENTIAL
YOU CAN REGISTER THROUGH:
EMAIL: SPORTSANDEVENTS@SOUTHWAIKATO.GOVT.NZ
PHONE: 07 885 1095
BOOK IN PERSON AT THE SWSEC

PUTARURU CHILDREN'S ART HOUSE

Spring Holiday Art Club
An Art Club for Creative Kids 7yrs plus & Teens

36 Ruru Cres Putaruru

3rd, 4th & 5th October
Times: 10:30am-12:30 & 2pm-4pm

Spaces limited so bookings essential
\$20 per student per session (payable on enrolment)

Special Offer!
Book in for 2 sessions and get the 3rd at 1/2 price. **Total \$50 for 3!!!**
Club fees (include all materials)

To register ~ phone Lyn (Art House Coordinator)
883-7500 or txt 027 480 3106

Movie Day

Elemental

28th September ★ 10am ★ The Plaza Theatre

Free entry, snacks & drinks

THE PLAZA THEATRE PUTARURU
KBeez
Bioscience

The PLAZA
WWW.PLAZA.ORG.NZ

MAVKA THE FOREST SONG

JOIN US ON WEDNESDAY, 27TH SEPTEMBER

YOUNG AND NAIVE FOREST SPIRIT MAVKA, DEVELOPS FEELINGS FOR A HUMAN MUSICIAN, LUKAS, AS THEY GROW CLOSER TO EACH OTHER, AN INEVITABLE SITUATION FORCES MAVKA TO CHOOSE BETWEEN HER LOVE AND HER DUTY AS A GUARDIAN OF THE FOREST.

THE PLAZA THEATRE PUTARURU 50 KENSINGTON STREET, PUTARURU

DOORS OPEN AT 9:30 AM THE MOVIE STARTS AT 10 AM ADMISSION: \$5 ENTRY

FUNDRAISER CAR BOOT SALE GARAGE SALE SAUSAGE SIZZLE

SATURDAY 30 SEPTEMBER
9AM - 12PM

\$10 PER STALL/CAR BOOT
IN THE CARPARK BEHIND
THE OLD PUTARURU CLUB KENSINGTON ST

To help Putaruru children with fundraising to attend their representative sports events

BOOKINGS TXT SANDRA WALLACE 02102913702

Rotary Putaruru

2023 ANNUAL BOOK SALE
Good quality books can be dropped into Farmlands Putaruru

Or direct to the hall Mon 2nd Oct 10-12midday or Ph Judith 027 2854915 to organise drop off
Venue for this year's BOOK SALE
St Mary's Hall, Kensington St, Putaruru

OPENING HOURS:

Wednesday	4th October 9am - 4pm
Thursday	5th October 9am - 4pm
Friday	6th October 9am - 4pm
Saturday	7th October 9am - 11am

"Raising funds to give back to our community"

Thank you to St Mary's and South Waikato Funeral Services for sponsorship

WANTED
We also recycle vehicle BATTERIES, car tabs, bra's
Ph 027 2854915

What's ON

Regular School Events

Bible in Schools: Friday 10:55am
House Time: Friday 11:45am
Assembly (All welcome): Bi-weekly Friday 2:15pm
Toasty Tuesday's
Sausage Sizzle: Friday's

September

Friday 22nd School Assembly
Last Day of Term 3

October

Monday 9th First Day of Term 4
Thursday 12th Touch Season Begins
Friday 13th Lichfield School Ag Day
Tuesday 17th Group Day at Lichfield School
Friday 20th School Assembly

Nga Kupu o te Wiki
Ko te reo he taonga

Here's this week's kupu to learn with your children:

pai - good, nice

Kia ora māmā mō te kai pai nei.

Thanks, mum, for this good food.

WELCOME TO OUR NEW STUDENT
Stella Gartshore

Stella has joined us in Room 1 - Kakano. She is enjoying being at school with her older brothers and she has already made some friends. She loves to do maths in the classroom and likes to play outside. Welcome to Lichfield School Stella.



Lichfield Poultry Farm
Fresh Free-Range Eggs

Shop open 7 days 8am - 6pm

2923 State Highway 1, Lichfield

Maria & Jim Paterson
Ph 07 883 6813



Van Der Heyden Contracting

Round Bale Silage Wrapping
Raking
Mowing
Hay Baling (Big Rounds and Small Squares)

Lichfield and surrounding area
Telephone: Antony 07 883 6761 or 027 671 2706



Spring Haiku's

By Room 4

Olivia:

sunshine awakens
blue skies and icy green grass
clear water swishing

Lucia:

Beautiful bees fly
sunshine over the water
bright flowers blossom

Lauren P:

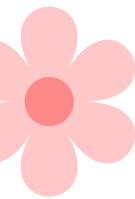
animals come out
blossoms start to grow on trees
cats have their kittens

Charlotte:

blossoms are blooming
in spring time blossoms bloom
every spring

Ollie:

awoken by the sun rises
water dripping down leaves
outside, it's good



Being a Duffy School

We have been privileged this year to be apart of and join over 500 other schools in this valuable programme for students. Being a Duffy school means more than just handing out books to children.

Our schools play an active part in fostering a love of books and reading in their children.

The last free books for this year will be going home this Wednesday 20th, please find the time to sit down with your child/children and read these books in the school holidays.



ZERO WASTE Education

Mātauranga Parakore

We had educators from Zero Waste join us for a week recently, delivering the Waste Minimisation Programme. The programme enables children to investigate the link between the earth's natural resources, the products they see around them and the resulting waste that ends up in our environment. Each class was seen individually so the programme was tailored to their year level. All the children really enjoyed it. Thanks Zero Waste.

Lichfield School Support Group

The LSSG is a group of dedicated parents who run fundraising and community building events throughout the year.

Our next meeting is on Monday 30th October at 3.00pm in the school hall. All welcome.

Toasty Tuesday's are back! \$2.00 each for a cheese toasty. Students are welcome to use their sausage sizzle cards to purchase them.



LSSG: Calf Donation Scheme



It is time to start thinking about whether or not you are able to support our school by donating a calf to the LSSG calf scheme.

If you would like to donate a calf, **please contact: Matthew Haigh on 07 883 3269 or 027 475 8960**

Laser Plumbing Putaruru are proud to be sponsoring Lichfield Primary School with our 'School Partnership Programme'

With any job completed by Laser Plumbing Putaruru 5% of the total value will be donated to LICHFIELD PRIMARY SCHOOL

This promotion is open to students, board of trustees, staff, and friends and family of LICHFIELD PRIMARY SCHOOL

Quote code **LPLICH23** when booking in your next job.



Plumbing
Laser
Putaruru

24/7 Callout Service Available

07 883 7261

putaruru@laserplumbing.co.nz

2 Elizabeth Street, Matamata

*Terms and conditions apply.



Wide range of fencing/rural services:

Wire/batten/electric/paling
Post & Rail
Retaining walls
Concrete/farm building jobs

Give Cory a call today!
0278056571



Lichfield Poultry Farm Fresh Free-Range Eggs

Shop open 7 days 8am – 6pm

2923 State Highway 1, Lichfield

Maria & Jim Paterson
Ph 07 883 6813



Van Der Heyden Contracting

Round Bale Silage
Wrapping
Raking
Mowing
Hay Baling (Big Rounds and Small Squares)

Lichfield and surrounding area
Telephone: Antony 07 883 6761 or 027 671 2706



PILOTT AUTOMOTIVE

7 Mannering Street, Tokoroa

Ph: 886 9687 Mobile 027 284 0204



Authorised Parts
and
Service Agents



SHEEPSKIN PLUS

Your Local Store For:
Phone 07 883 6898
2881 State Highway 1
Lichfield

Slippers
Possum Merino Knitwear
Sheepskins
and Gifts

DIGGER HIRE



Owner operator

20 years experience

13 tonne tilt bucket

Agriculture work, building sites, etc

Give Marty Van Heuven a ring for any
enquiries

022 077 1896

South Waikato Waste Disposal

Septic Tanks
Cattle Underpasses
Grease Traps

Phone (07) 883 7101 or
(027) 495 1905

Have your septic tank emptied, mention
this advertisement and we will donate
\$20 to Lichfield School!



Mark Cooney

CONSTRUCTION

New Builds - Renovations - Alterations

Call for a free quote today

021 838 473

Native Trees for Sale

Suitable for Farm Planting and
Lifestyle Blocks

50c from every tree purchased in the RD2
area will be donated to the school

\$2.50 each

Manuka Kanuka

\$5 each

Kowhai	Ake Ake
Mahoe	Wineberry
Five Finger	Koromiko
Lancewood	Toetoe
Pittosporum	Karaka
Ribbonwood	Karamu
Totara	Rangiora
Cabbage tree	Kahikatea
Flax	Rewarewa

Text or Phone Colin
027 279 0365

Habraken Builders LTD

For all your building needs:

Cowsheds

Barns

Implement Sheds

Feedpads & Silage Bunkers

Concrete Prep & Place

Alterations and Additions



Mark 027 247 7351

habrakenbuilders@hotmail.co.nz

NATURAL SPREADERS LTD

"We pump, stir and desludge effluent ponds!"

Phone Wayne: 07 886 6667 or 027 728 8482



Personalised Innovative Dairy Solutions

Ziggy & Chrissy Burch

8243 State Highway 27, Hinuera, Matamata

2251 State Highway 1, Putaruru

Ziggy: 021 394 555 | Chrissy: 0275 394 555

info@betamilking.co.nz www.betamilking.co.nz



Lee-Ann Stuart

Residential Sales Consultant

M 027 270 7792 P 07 880 9762

leeann.stuart@harcourts.co.nz

Kevin Deane Real Estate (Cambridge) Ltd

Licensed Agent REAA 2008

28a Arawa Street,
Matamata 3400

www.kdre.co.nz

Harcourts



Kia ora from Kirsty, Luxmi, Shona, Ashleigh, Olivia, Ida, Jess, Petalla, Debbie, Kim, Shiree, Dianne, Andrea, Kightley, Rick and Owen.