

ARARIMU SCHOOL

NEWSLETTER



4 December 2025

Term 4 Week 9

Dear Parents and Community,

As we approach the end of the academic term, I hope it is not premature to extend my season's greetings. It is remarkable how swiftly this term has progressed, with numerous activities and events still requiring our attention. These include preparations for the Supreme RILEY Award BBQ, a Helpers' Morning Tea, Lunch with the Principal, Year 8 Graduation, End-of-year Prize-giving, as well as addressing curriculum changes and property challenges. The list of responsibilities appears to expand daily.

This will be our final newsletter for the term, and I would like to take this opportunity to express my sincere gratitude for your ongoing support and patience throughout the year. Your commitment has ensured that our students have access to a wide range of activities and events. We are indeed fortunate to have such a supportive network of parents, grandparents, and community members. Without this invaluable support, the opportunities we provide for our students would be significantly diminished.

I would also like to extend my personal appreciation to our staff, who consistently go above and beyond for our students. This week, I have communicated with several schools encountering difficulties in recruiting staff. We are indeed privileged to begin the year without any staffing vacancies. Our educators continually reflect on their practices and strive to identify the best ways to support our students, and I am grateful for their dedication. We have a great team operating.

I would like to give special recognition to our School Board, which plays a crucial role in advancing the educational experiences of all students and in preserving the esteemed reputation of Ararimu School within the community and beyond. New enrolments frequently cite the positive feedback they have received about our school, which is highly encouraging.

Our Parent-Teacher Association (PTA) continues to work diligently to fundraise and support both students and staff in light of our limited budget. The school remains in need of additional resources, and the PTA's assistance is invaluable in this regard.

Finally, I wish to express my appreciation for our students. I have predominantly positive interactions with them and consistently observe their willingness to support one another. As many of you may have witnessed on my birthday, their kindness often astonishes me.

On a personal note, I acknowledge that the responsibilities of this role can sometimes feel isolating and challenging. I am fortunate to have a robust support system during such times, and I would like to thank all the wonderful individuals who provide assistance to me when called upon. You help me to keep my stress levels manageable! Thank you.

I wish you all a joyful Christmas. I look forward to catching up at the end-of-year Prizegiving.

Craig Henderson - Principal

ALL LIBRARY BOOKS MUST BE RETURNED TO THE SCHOOL LIBRARY AS SOON AS POSSIBLE PLEASE – STOCKTAKE UNDERWAY. BOOKS NOT RETURNED WILL BE CHARGED FOR.

DATES FOR YOUR DIARY

Fri 5 Dec	Assembly – 9:10 am – in the Hall
Mon 8 Dec	Last Guitar Lessons this term.
Tue 9 Dec	Yr 8 Hauraki Plains – Orientation Day Lunch with the Principal – 1:00 pm
Wed 10 Dec	Last Keyboard Lessons this term.
Thur 11 Dec	Helpers Morning Tea – 10:30 am in the School Staffroom
Fri 12 Dec	End of Year Reports Sent Home Supreme RILEY Award Winners Reward at Lunch Time – 1:00 pm to 2:20 pm
Mon 15 Dec	Year 8 Graduation Dinner – 5:30 pm
Tue 16 Dec	End of Year Prize-Giving – 6:00 pm in the Hall

Wed 17 Dec **School Ends at 1:00 pm**
School Bus Leaves school at 1:15 pm

PLEASE NOTE: ALL students are to be collected from school
Promptly at 1:00 pm, unless they are catching
the School bus.

There will be NO STAFF or PROVISION at school
to look after students after 1:15 pm.

START OF TERM 1 – WED 4 FEBRUARY 2026

+++++

SUBWAY	11 December 2025
YR 7 & 8 TECH.	Every Wednesday – 11:00 to 1:40pm Rosehill Intermediate
KAPA HAKA	Every Thursday 2:00 – 3:00pm In the Hall or Room 7
LAUNCHPAD (Bible)	No more Launchpad Lessons this term.
PIANO LESSONS	Piano Lessons with Kathy Every Wednesday (for booked students)
GUITAR LESSONS	Guitar Lessons every Monday with Sean Oasan – (for booked students)

Key Term Dates

Mon 15th December - Year 8 Graduation
Tue 16th December - End of Year Prize-giving
Wed 17th December - school finishes at 1.00 pm
Wed 4th February - 2026 School Year starts

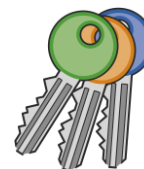
**HAPPY CHRISTMAS
& BEST WISHES FOR
THE NEW YEAR**

**FROM ALL THE STAFF
AT ARARIMU SCHOOL**



POOL KEYS FOR SALE

**LAST DAY TO PURCHASE WITH
PAYMENT IN OUR BANK ACCOUNT
TUESDAY 16TH DECEMBER**



Only a limited amount of keys left.

2026 STATIONERY PACKS



Available from Friday 5 Dec 2025

Look inside Newsletter for details

Teacher and Principal Awards – Week 8



Riley Awards – Week 8





ECCS ATHLETICS



FIELD OF DREAMS

A member of the Field of Dreams Foundation visited Ararimu School recently with a donation of Rugby, Netball and Soccer balls for our students to use.



WHEELS DAY

Our Students enjoyed a day of fun and laughter as a reward for their great behaviour during the year.

They had an extended lunch time and were able to ride on bikes, scooters, skateboards and go-karts. They were treated to a free sausage sizzle and ice blocks. A great mufti day.

Well done to all our wonderful students



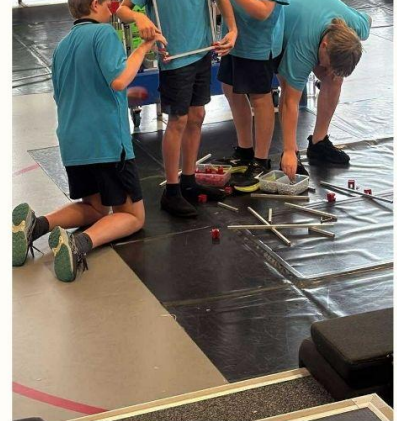
Weetbix Tryathlon Certificates



Using Life Jackets in the School Pool as part of water safety



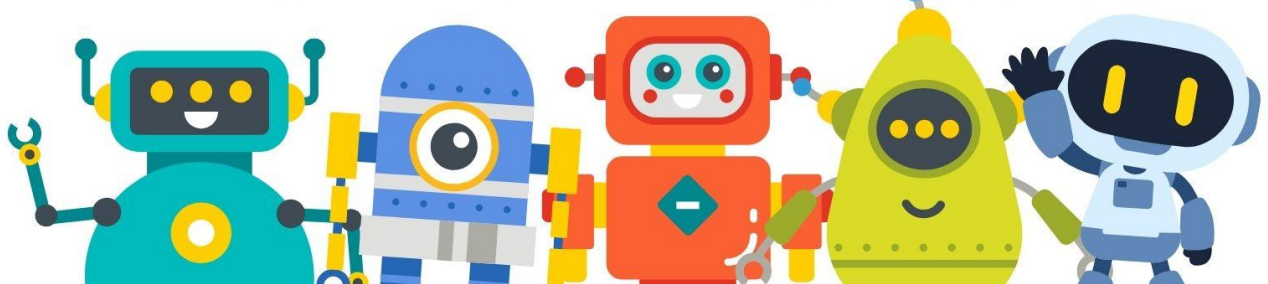
EPRO 8



EPRO8 2025

Wow, what a ride. These boys had us hooked from the very first moment and never let up. They powered through the trials, the semi-finals, and all the way to the big-league EPro8 finals like absolute legends. In the trials, they engineered a brilliant barrier arm, then stormed into the semis and wowed everyone with a giant shark that earned them a three-way tie for first place. And the finals? A full Mission Impossible–style abseiling spy, built with precision, grit, and a whole lot of flair, the only school to attempt this.

What truly set them apart was their teamwork. They lifted each other, listened, shared ideas, and played to each other's strengths. They didn't just build structures—they built confidence, trust, and momentum. These boys were unstoppable, and they made the whole journey unforgettable.



STATIONERY PACK ORDERS FOR 2026

Order from Friday 5 December 2025

If you are unsure what Year your child will be in for 2026, please contact the School Office: 09 294 8372

Ready, Steady, Back to School!

Eager to get a jump start on the upcoming academic year? Your class stationery list is just a click away at schoolpacks.co.nz.

In our continuous efforts to offer only the best for our students, we've teamed up with Schoolpacks by Qizzle. This collaboration is designed to give your child the best educational tools and to simplify your ordering process.

Ordering is simple and stress free:

- Simple Search: Begin by entering our school's name on schoolpacks.co.nz.
- Select the Year/Pack: Once you've located our school, you can select your child's year or specific pack to review the stationery list.
- One-Click Add: With a single click, the entire list contents are added to your shopping cart.
- Swift Checkout: The platform boasts a fast, single-page checkout process, making your experience hassle-free.

Why Choose Schoolpacks?

- Effortless Shopping: Navigate Qizzle's user-friendly platform and secure your child's full stationery list within moments.
- Tailored Deliveries: Schedule your delivery to match your availability, even if you're taking a break at the bach or beach.
- Support our school: Each order you place bolsters our school with rewards, enhancing the resources available for our students.
- Flexible After Pay: Opt for easy instalments, adapting to your financial convenience.

Kickstart your preparations today and set the stage for an outstanding academic year!

<https://schoolpacks.co.nz/>



YOUNG AT ART

CHILDREN'S
CHRISTMAS
HOLIDAY
WORKSHOPS

PUKEKOHE

BOOK NOW! PLACES
LIMITED

SEE OUR WEBSITE FOR MORE
INFORMATION & BOOKINGS

WWW.YOUNGATART.CO.NZ



'FAMILY FESTIVE WATERCOLOURS'

Students aged 6 - 99 years

Saturday 6th December, 9.30am - 12 noon

Cost: \$80.00 for 2 places (1x adult and 1x child or 2x adults)



WWW.YOUNGATART.CO.NZ

BOOKINGS NOW OPEN!



Looking for something fun & creative to entertain your children these holidays?
Consider a **Young at Art** workshop!



FAMILY WORKSHOP - KIWI CHRISTMAS WATERCOLOUR (6 - 99yrs)

Saturday 6th December 2025, 9.30am - 12.00noon

Bring along your daughter, son, niece, nephew or grandchild, get creative and together you will each create a your own personal Christmas themed piece of art with a kiwi twist. All ages and generations welcome (2x adults or 1x adult and child). Perfect to get you all in the festive mood.

Tutor: Anna Molinsae

Cost: \$80.00 incl. gst *Price includes all materials and 2x places in class



PK1, WOODEN WALL HANGING GINGERBREAD HOUSE (8 yrs+)

Wednesday 17th December 2025, 9.00am - 1.00pm

This workshop is open to adults and children. Create a flat wooden gingerbread house using a wood base and a variety of mixed media techniques and materials. Fabulous to hang on your wall each Christmas or as a present for a friend or family member. All ages and generations welcome (you can send your child on their own or Parents, Aunty, Uncles, Grandparents can join them and make one of their own).

Tutor: Anna Molinsae

Cost: \$69.00 incl. gst *Price includes all materials

PK2, PERFECTLY PAINTY LIONS (7-16yrs+)

Thursday 18th December 2025, 9.00am - 12.00pm

Learn all about how to paint with acrylic paints and create your own personal Lion painting on canvas adding texture in this perfectly painty 'roaring' workshop!

Tutor: Anna Molinsae

Cost: \$57.50 incl. gst *Price includes all materials



PK3, MARVELLOUS MIXED MEDIA - Festive theme (7-16yrs+)

Thursday 18th December 2025, 1.00pm - 4.00pm

Create a mixed media piece of artwork on canvas with a festive theme. *Please note your child's artwork theme can be altered if your family do not celebrate Christmas, please comment on booking or email Anna if you prefer this option.

Tutor: Anna Molinsae

Cost: \$57.50 incl. gst *Price includes all materials



PK4, CREATIVE CRAFTY CHRISTMAS (6-16yrs+)

Friday 19th December 2025, 9.00am - 3.00pm

Get into the Christmas spirit with christmas songs while Creating decorations, presents and cards in this creative crafty Christmas workshop. We will have our very own face painter attending!

Tutor: Anna Molinsae

Cost: \$92.00 incl. gst *Price includes all materials

FOR BOOKINGS OR MORE INFO:

www.youngatart.co.nz or admin@youngatart.co.nz / Mob No. 0297 712 923

HOME STUDIO, 117 Valley Rd, Pukekohe (side entrance)

Holidays, Term Time and Arty Parties - Children, Teens, Adults & Corporate events!



THIS FRIDAY ARARIMU PTA



ICE BLOCKS -
\$1.00



JUICYS -
\$2.00



ICE CREAM PIE
- \$3.00

WE NEED YOUR HELP

Ararimu Market 2025
Saturday 6th December



We need volunteers to
help with our PTA BBQ at
the Ararimu Christmas
Market this Saturday.
Contact Sarah Green ASAP
to get your name down.



MUSIC LESSONS
@ ARARIMU SCHOOL
TIME TO ENROL!

Acoustic or Electric Guitar and Ukulele
FUN * CREATIVE * CONVENIENT

Learn to play your favourite songs.
 Plus opportunities to perform and enter music exams.

Sean Oasan
021 151 5077
 seanosasan@gmail.com
 www.nzmsmcounties.co.nz

**Guitar Lessons at school
 take place each Monday.**

**Please contact Sean if your child is
 interested in Guitar Lessons.**

PRIVATE PIANO LESSONS IN BOMBAY



ARARIMU
COUNTRY KIDS CLUB
 BEFORE SCHOOL AND AFTER SCHOOL CARE
AMY KENNEDY 021 685587



**JO'S
 PIANO
 LESSONS**

Private Lessons
 Accompaniment
 Beginners and
 Advanced Learners

Learn the
 Art of
 Piano

Jo Barwick ATCL AIRMTNZ
 Piano and Keyboard teacher
 Bombay Hills Studio, Auckland
 Phone: 0273 255 058
 jobarwickart@gmail.com

SEASONS FOR GROWTH

"Seasons For Growth is a grief, loss and change Programme for children dealing with challenges in their lives e.g separation, divorce, loss through death, or other family changes. Our Afterschool Programme starts next year in Term 1, held in Pukekohe and runs once a week over 8 weeks. An optional Parent Programme also runs at the same time. For enquiries or enrolments please phone/text the coordinator Marisa on 021 142 5812, office (09) 238 7228, or email seasonsfranklin@xtra.co.nz. For more info: www.pukekohecommunityaction.co.nz/seasons."