



*Arohena  
celebrates  
Diwali*





## AROHENA SCHOOL

*Kaua e mate  
wheke,  
mate ururoa*

P

*Don't die like an octopus, die  
like a hammerhead.*  
Don't give up, persevere until  
the end.  
We always keep going, even  
when it's hard

*Manaaki mai,  
manaaki atu.*

R

*Respect yourself and others.*  
•We use kind words  
•We use our manners  
•We look after ourselves,  
others and our place

*Mā te kimi ka kite,  
Mā te kite ka  
mōhio, Mā te mohio  
ka marama.*

I

*Seek and discover. Discover  
and know. Know and become  
enlightened.*  
We can adapt and change, and  
do things in a different way

*Pai tū, pai hinga,  
nāwai rā ka oti.*

D

*By standing and falling,  
eventually it will be completed.*  
We are enthusiastic learners  
and strive to do our best

*Nā koutou i tangi  
nā tātou katoa.*

E

*When you cry, your tears are  
shed by all of us.*  
We understand and share the  
feelings of others

# In learning we value Perseverance, Respect, Innovation, Drive and Empathy. We call this having Arohena **PRIDE**

## Perseverance

Theo - putting in effort and staying focused during handwriting

Isaac - trying even when tasks are challenging

Tina - not giving up during bike safety

## Respect

Room 2 - helping room 1 move furniture around in their class so the new carpet could go in

Jorja & Faye - being willing to lend a hand, showing a strong sense of responsibility

Classroom monitors - looking after learning environments

## Innovation

Archie - thinking creatively and adapting ideas in and out of the classroom

Wyatt - thinking outside the box and coming up with creative solutions to problems

Mac - adapting and trying new ideas in his classroom learning

## Drive

Louie - approaching tasks with energy and a positive attitude

Will - showing enthusiasm for maths, having fun and striving to do his best

Fergus - approaching all learning areas with enthusiasm and giving 100% in everything he does

## Empathy

Miriana - being considerate and offering help to friends and teachers

Skylar & Quinn - showing tautoko when younger ākonga need plasters or ice packs

Noelene - always checking in on her colleagues



# Whānau

## Reo Māori phrases to share

### **Tūwhitia te hopo** **Feel the fear and do it anyway**

*Reo Māori champion Te Wharehuia Milroy once said, “Tūwhitia te hopo, mairangatia te angitu” or, “Overcome your fears to achieve.” Today the shortened version, tūwhitia te hopo, is used by many throughout Aotearoa New Zealand as an encouragement to push through self-doubt.*



This weeks Reo Māori phrase reminds our ākonga that growth comes from courage, and that stepping forward even when it feels challenging is how we discover what we're truly capable of.

## Important Dates



### **Reports sent home**

-Monday 1<sup>st</sup> December

### **Maungatautari Sanctuary Mountain EOTC**

(education outside the classroom)

-Wednesday 3<sup>rd</sup> December

### **Arohena Rural Women's Annual Christmas Dinner**

-Wednesday 3<sup>rd</sup> December at Arohena Hall

### **Christmas Catch-up**

-Thursday 11<sup>th</sup> December

### **Arohena Playcentre Christmas Party**

-Tuesday 16<sup>th</sup> December

### **Touch Break-up**

-Wednesday 10<sup>th</sup> December

### **PRIZE GIVING & FINAL DAY OF SCHOOL**

-Wednesday 17<sup>th</sup> December





# TUMUAKI MESSAGE



Kia ora e te whānau,

This week our School Value Focus is:  
**Innovation – Mā te kimi ka kite, Mā te kite ka mohio, Mā te mohio ka marama**

*Seek and discover. Discover and now. Know and become enlightened.*

At Arohena School, we continue to uphold our value of Innovation:

- We can adapt and change, and do things in a different way

As we come closer to the end of another school year, we want to take a moment to celebrate the many achievements of our learners and the dedication of our board and staff. This year has been filled with rich opportunities for education outside the classroom, and ākonga have shone in every setting from Eastern Zone sports to touch tournaments showing commitment, teamwork, and pride in our school community.

As part of this busy and vibrant school life, our calendar can at times become so full that we need to celebrate certain events later in the year. This allows us to give each occasion the time and attention it deserves while keeping our schedule manageable for everyone, and it doesn't mean the celebration is any less important. Kaiako and ākonga enjoyed celebrating Diwali.

Through all of this, attendance and achievement continue to be at the forefront of our mahi. We know that when ākonga are present, engaged, and supported, they thrive and these priorities guide every decision we make throughout the year.

Supporting this success is the tremendous effort our kaikao have put into understanding and implementing a continually evolving curriculum. Their hard work, adaptability, and unwavering focus on learning have made a real difference in learning, particularly in a time of ongoing educational change. It is also beneficial to learning that we will close the year with a full and settled staff. This stability provides continuity for ākonga and sets us up positively as we look ahead to the new year.

Looking further to the future, we know there will be new curriculum expectations and assessment mandates coming in 2026. In preparation, we have been engaging with the Ministry of Education and consistently asking a key question: "How will the curriculum work for multi-level classrooms?" This remains an important consideration for our school, and it is a question we are still unpacking as we await a confirmed response from the Ministry.

You can read further in this newsletter about what we as a school will continue to do to give effect to Te Tiriti o Waitangi, and how this commitment will keep guiding our actions and direction in the years ahead.

Thank you to our ākonga, staff, board and whānau for your ongoing support throughout the year. We are proud of all we've accomplished through mahi tahi and look forward to an exciting year ahead.

Ngā manaakitanga,

Justine

Tumuaki: Principal

*Justine Kingi*



# ROOM ONE

# MATH

By the end of the term we will understand and use units of measurement, specifically grams and kilograms, to measure and compare the weight of objects.

## AT HOME

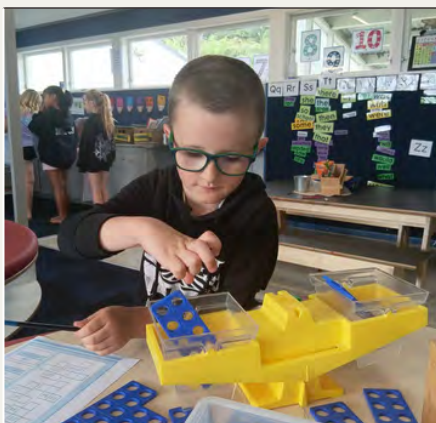
Involve your tamariki: children in measurement by asking them to:

- help weigh fruits and vegetables using supermarket scales
- notice the weight labels on packaged goods and discuss how these measurements help in deciding how much to buy
- while on a car ride, look at the numbers on the dashboard that show how far you've travelled. Make a game of guessing how far it is to your favourite places, like the park or grandma's house!

## AT SCHOOL

We explored weight by using scales to measure various classroom objects. Tamariki were able to:

- record their weight appropriately
- work in groups to compare the weights and discuss which items were heavier, lighter, or equal in weight



# ROOM TWO

## Match

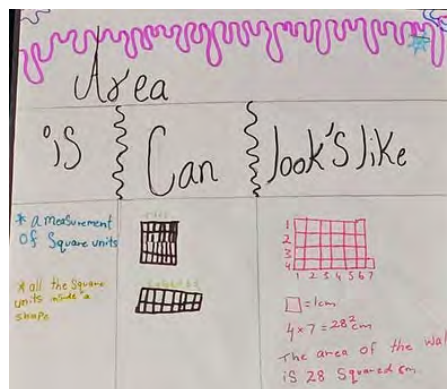
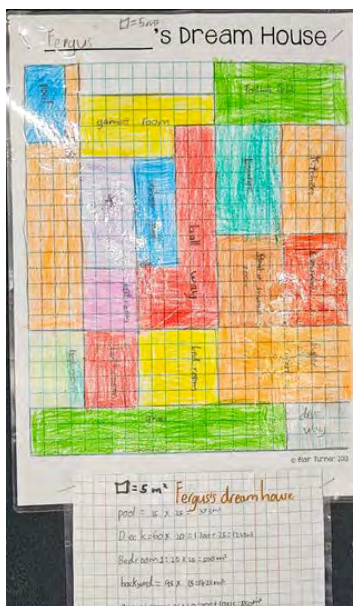
I expect by the end of the term we will be able to use multiplication to solve division problems. We will independently use area and perimeter to solve different math problems.

### AT HOME

- Use household items like socks, or egg cartons to represent multiplication and division. For example, use an egg carton to explore arrays (e.g., 3 rows of 4 eggs)  $3 \times 4 =$
- Singing their times tables, and times table challenges.

### AT SCHOOL

- We start our morning maths session with basic facts helping with instant recall of multiplication and division facts and reinforcing what we have learnt throughout the term
- We explored perimeter and area through designing dream houses
- We also learnt about different measurements such as square meters



# Arohena School Touch Teams



Pīwakawaka

## Players of the Match

Mia & Faye



Kererū

## Player of the Match

Miriana



Tūi

## Player of the Match

Quinn

Playing for our school's touch teams can support and demonstrate each of our school values:

- **Perseverance:**
  - Players learn to keep pushing through tough games, challenging weather, or strong opponents.
  - Training regularly and striving to improve skills shows dedication and commitment.
- **Resilience:**
  - Teams bounce back from losses or mistakes, using setbacks as opportunities to grow.
  - Players develop mental strength by handling pressure and maintaining a positive attitude.
- **Innovation:**
  - Players think creatively to develop new strategies and plays on the field.
  - Teams adapt to different opponents and situations with quick, clever decision-making.
- **Drive:**
  - Athletes show motivation to perform their best at every game and practice.
  - Team members set goals and work hard to achieve them individually and collectively.
- **Empathy:**
  - Players support teammates, showing understanding and care when others struggle.
  - Respect for opponents, referees, and coaches reflects compassion and sportsmanship.

# LEARNING OUTSIDE THE CLASSROOM

## MAUNGATAUTARI

**Date:** Wednesday 3<sup>rd</sup> December

**Venue:** Maungatautari

**Time:** 10 - 2pm

This EOTC trip (education outside the classroom) will be a culmination of the learning in our classrooms and supports our strategic plan:

Goal - Energise an impactful Arohena learning community,

Initiative 1a - embed a living localised curriculum that acknowledges and is facilitated by Raukawa

### LEARNING OUTCOMES

- Discover the story behind how Maungatautari got its name, embracing the rich Māori history and cultural significance.
- Understand the journey of how Maungatautari became a sanctuary, recognising the role of kaitiakitanga (guardianship) in conservation.
- Explore the importance of biosecurity and its role in protecting ecosystems, reflecting on our responsibility as kaitiaki (guardians) of the land.

## Touch breakup

**Date:** Wednesday 10<sup>th</sup> December 2025

**Venue:** Te Awamutu Pools

**Time:** 12pm

Joining Putaruru Touch has supported and demonstrated all our school values.

Justine will remain at school with non Putaruru Touch Team participants

*Permission letters for both of the learning events will be sent home*

# LEARNING OUTSIDE THE CLASSROOM



# LEARNING OUTSIDE THE CLASSROOM



BIKE  
SAFETY



# TE TIRITI O WAITANGI

*The staff of Arohena School join the collective voice of teachers, principals, professional education associations, parents and school boards who share these concerns.*



40 Pukewhau Road, RD7, Te Awamutu 3877  
Phone | 07 872 4526  
Email | [principal@arohena.school.nz](mailto:principal@arohena.school.nz)  
[www.arohena.school.nz](http://www.arohena.school.nz)

To the Minister of Education

## REAFFIRMING OUR COMMITMENT TO CONTINUE TO **GIVE EFFECT** TO TE TIRITI O WAITANGI

Following the recent government decision to remove the requirement for school boards 'to give effect to Te Tiriti o Waitangi' from the Education Training Act 2020, we, staff of Arohena School reaffirm our unwavering commitment to honouring and giving effect to Te Tiriti o Waitangi, and state our opposition to the government's directive to remove these expectations.

We know that our commitment to Te Tiriti o Waitangi extends beyond supporting Māori learners; it enhances the learning experiences for every child. By honouring and giving effect to Te Tiriti o Waitangi, we foster a school community grounded in respect, belonging, and unity, helping to build a culture where all children can thrive.

### 1. This Is About Our Founding Agreement

Te Tiriti o Waitangi is our nation's founding document. It's a living agreement that continues to shape our laws, our society, and our relationships today. For generations, the government failed to honour these promises. The Education and Training Act 2020 was an attempt to finally make good on this commitment within our education system. The government now argues that Te Tiriti obligations "rightfully sit with the Crown," not with school boards. **But school boards are Crown entities. They govern Crown institutions.** If schools don't honour this agreement, who will?

### 2. This is About Raising Achievement

Across many years of working with schools that have large Māori student communities, one message has been clear: when ākonga see their identity, language, and culture honoured in their learning spaces, they become more engaged. Their confidence lifts, and they take a more active role because the learning connects to who they are.

Research shows that a strong cultural identity supports higher academic achievement, improved wellbeing, and greater resilience. The impact isn't limited to individual learners either, when schools genuinely uphold Māori culture and te reo Māori, the positive effects extend to whānau and the wider community.

Creating inclusive, culturally rich learning environments benefits every learner. It builds empathy, strengthens critical thinking, and grows the cultural capability young people need to succeed in an increasingly diverse and interconnected world.....

# TE TIRITI O WAITANGI

....The government is claiming the 2020 Treaty clause “made no difference to raising the achievement of tamariki Māori.” The evidence to refute this is kura kaupapa.....*“According to NZQA data from 2024, kaupapa Māori students outperformed their peers across nearly every metric. Sixty-three percent of kura kaupapa students attained NCEA Level 1, compared to 54 percent across all Māori students. At Levels 2 and 3, kura students achieved 72 and 73 percent respectively — well above national Māori averages — and 41 percent gained University Entrance, significantly higher than the 24 percent rate for all students and more than double the 18 percent rate for Māori in English-medium schools.”*

Educationalists know what works! When Māori have genuine agency in educational decision-making, when their language and culture are reflected in their learning, when they're free from discrimination, when whānau are actively involved achievement improves. These conditions align precisely with what giving effect to Te Tiriti requires.

### 3. This is About Personal Transformation

In summary, embracing the true spirit of Te Tiriti has shaped us into more effective educators, leaders, and human beings. This path of learning and personal growth is open to everyone, but only if we remain dedicated to the partnership that Te Tiriti sets out. Ignoring this responsibility doesn't only affect Māori communities it diminishes all of us by taking away the chance to develop into the unified nation we committed to building together.

For these reasons, Arohena School staff confirm our commitment to give effect to Te Tiriti o Waitangi so that everyone knows our school will keep honouring Te Tiriti in the way we teach, make decisions, and connect with all our school whānau.

Ngā mihi nui,

Justine Kingi (tumuaki: principal)

Moana Hohepa (kaiako: teacher)

Jolene Saunders (kaiako: teacher)

Noelene Ormsby (kaimahi: learning assistant, reliever, bus driver)

Sarah Hohepa (kaiwhakahaere: administrator)

Nikole Blunt (kaihoroi: cleaner)

# EVERY DAY MATTERS

**OUR SCHOOL ATTENDANCE GOAL FOR 2025 IS TO RAISE EACH SCHOOL TERM'S ATTENDANCE RATES HIGHER THAN THE SAME PERIODS IN 2024**

The Government's target is for **80% of students to attend regularly**, that is to attend school more than 90% of the time



# EVERY DAY MATTERS

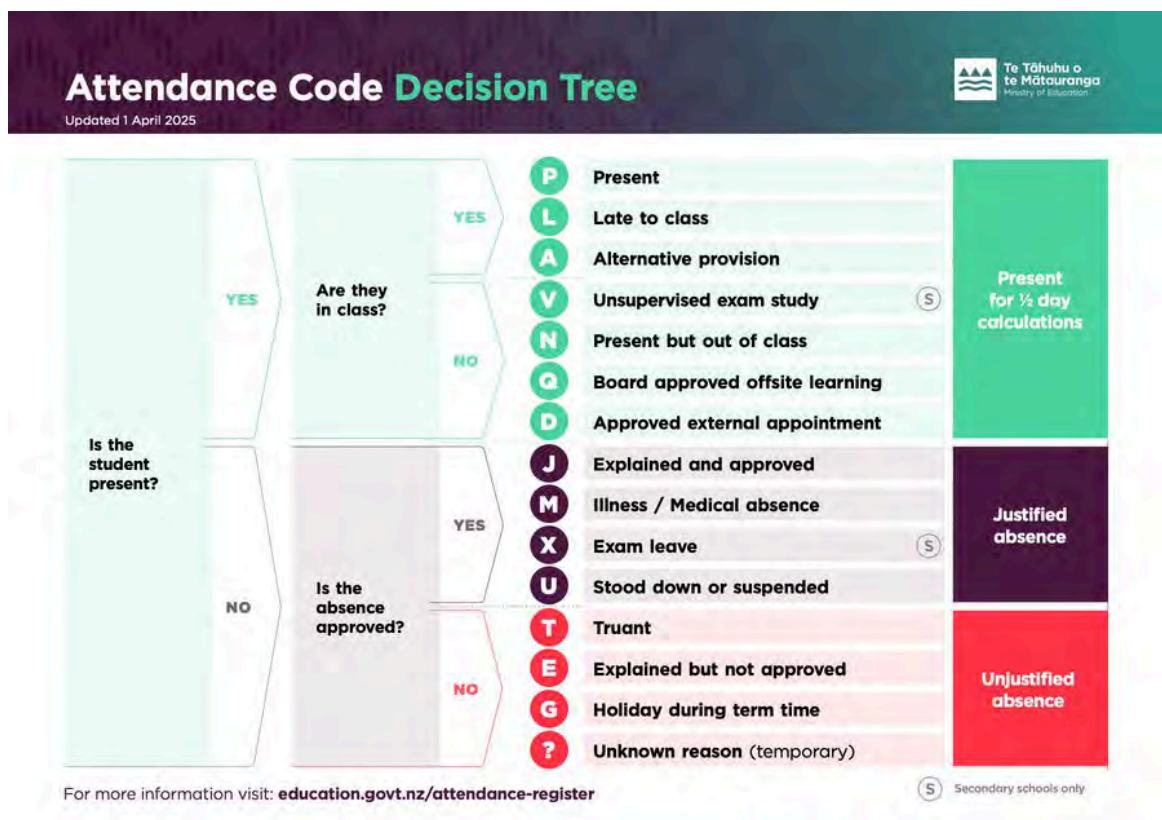
## ATTENDANCE MANAGEMENT PLAN FOR AROHENA SCHOOL

### Rationale:

At Arohena School we understand that regular attendance is closely linked to ākonga achievement and wellbeing. School age children are required to attend school every day and everyone (school personnel, parents, whānau and communities) play a vital role to ensure this is a top priority. Arohena School's Attendance Management Plan provides a clear process to improve regular attendance by identifying patterns of absenteeism and implementing culturally responsive strategies. It complies with Ministry of Education requirements to monitor and report ākonga attendance and aligns with STAR guidelines (Stepped Attendance Response).

Arohena School's ATTENDANCE MANAGEMENT PLAN was ratified by the Board on 26.11.25.

It will be published to our school website by the start of Term 1, 2026 and a hard copy will be sent home.



A friendly reminder to contact the school if your child/ren are absent from school. If there is no contact from a parent:

1. ? (unexplained absence) will be entered in the attendance register by the classroom kaiako
2. school will attempt to contact home by ringing the phone number listed in HERO
3. if we are able to contact a parent we will change the attendance code according to the given reason eg M (medical)
4. if there is no reply we will leave a message and change the ? to T (truant)

# BOARD MATTERS

## Board Hui

**Venue:** School office/staffroom

**Day:** Wednesday 25<sup>th</sup> February 2026

**Time:** 6.30pm

*Please take time to sign into school docs and review Term 4 policies. The sign in details are at the bottom of this page.*

## Arohena School

### Current review and review instructions

#### Who reviews our policies?

- All reviews are open to board members, staff, students, and the school community (parents/caregivers/whānau).
- Anyone can review any policy that has a review button.

For more information, see [About the review process](#) .

Board responsibilities are outlined in our policies. For an overview, see [Board Responsibilities](#). The table below shows which policies the board should review. Note that other reviewers can review these policies too; they're not exclusively for the board.

For the full review schedule, see [Review Schedule and Board Assurances](#).


#### Get started

To start reviewing, click on a policy name below, then click the **Start your review** button. If a link is inactive, our school doesn't have the policy.

In term 4 we are reviewing policies in the **Health, Safety, and Welfare Policy** section.

Term 4 policies	Review opens 6 October
• <a href="#">Bullying and Harassment</a>	Board review
• <a href="#">Behaviour Management</a>	Board review
• <a href="#">Searches, Surrender, and Retention of Property</a>	
• <a href="#">Minimising Physical Restraint</a>	Board review
• <a href="#">Stand-down, Suspension, and Exclusion</a>	
• <a href="#">Staff Wellbeing and Safety</a>	

These are the policies specified on the review schedule. You can also review any policy that has a review button.

Reviewers who are not able to use the online review tool can use the [Policy review form](#) .

#### Last review

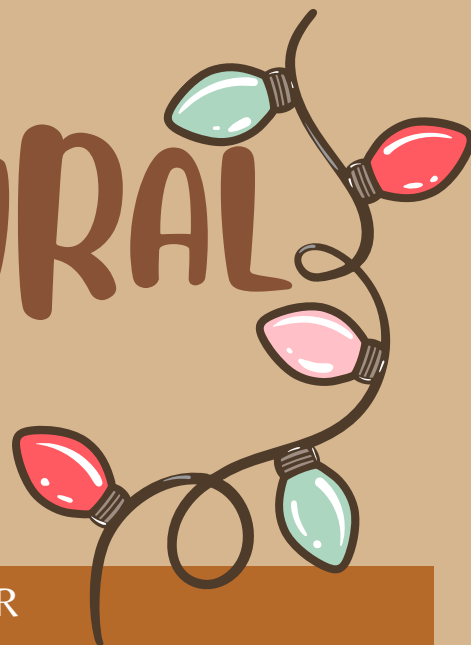
Topic type

We invite you to visit the site at <https://arohena.schooldocs.co.nz> (note that there's no "www.").

Our username is "arohena" and password "arohena3877".



# AROHENA RURAL WOMEN



YOU ARE INVITED TO ATTEND OUR  
ANNUAL RURAL WOMEN'S CHRISTMAS PARTY AND BINGO EVENING;  
YOU DO NOT HAVE TO BE A MEMBER OF RURAL WOMEN TO ATTEND THE  
EVENING



**DATE:** Wednesday 3rd December

**TIME:** 7 p.m

**PLACE:** Arohena Hall

What to bring.....

Yourself  
and your  
neighbour

Food for  
main  
course

Cutlery  
and  
Crocery

Money for  
drinks and  
raffles

Committee will do dessert

PLEASE BRING A GROCERY ITEM FOR WOMENS REFUGE  
(PLEASE CHECK EXIRY DATE)



Contact: Desiree Bryant 8723528 or  
Maria Blackwell 8725520





YOU'RE INVITED TO OUR

# CHRISTMAS CATCH UP

THURSDAY 11TH DEC 2025

Time: 6:30 pm

Where: Arohena Community Hall

*Please bring a plate of finger food to share*

Any questions call or text: Lizzie 0278298544



**POSSIBLE SANTA SIGHTING :-)**





## **Arohena Playcentre**

invites all Arohena, Ngaroma and Wharepapa South preschoolers and the parents of the junior class at Arohena School to their Christmas party

**When:** 10.00am Tuesday 16th December 2025

**Where:** At Arohena Hall

*Santa will arrive about 10.45am*

**Contact:** Judy Sherriff 0274930845 to find out what you need for Santa.



## START PLAYING. STAY HOOKED

*Fun Festival for all whānau*

*Hockey Games & Fun Games (including for parents & siblings!)*



**SAT 29 NOV**  
**10 AM - 2 PM**

**CHECK COMMUNITY FACEBOOK FOR WEATHER  
POSTPONEMENT**

*In case of rain, POSTPONEMENT DATE:*



**TUE 02 DEC**  
**3:30 PM - 6:30 PM**



**PUTĀRURU**  
**COLLEGE COMMUNITY TURF**

### WHĀNAU

- **BRING YOUR OWN PICNIC**
- **SAUSAGE SIZZLE PROVIDED BY PUTĀRURU COLLEGE**

### PLAYERS (AVAILABLE FOR WHĀNAU TOO)

- **KIT PROVIDED - HOCKEY STICK, MOUTHGUARD,  
SHINGUARDS**
- **NEED - RUNNING SHOES, LONG SOCKS, DRINK BOTTLE**



**WAIKATO**  
**HOCKEY**

**Tū Manawa**  
**Active Aotearoa**



Contact email  
[sonja@waikatohockey.org.nz](mailto:sonja@waikatohockey.org.nz)

Sanitarium™  
The Health Food Company

# Weet-Bix™ **KIDS TRYathlon™**

**CAMBRIDGE**

**Sun 7 Dec**

**St. Peter's Cambridge**

**Enter with your  
classmates  
& be in it to**

**WIN**

Enter a group of 15\*  
or more students &  
your school could  
WIN awesome  
prizes thanks to  
our sponsors



**REGISTER  
NOW  
TRY.WEETBIX  
.CO.NZ**

SPONSORIAL PARTNER



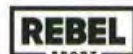
**Weet-Bix**

MAJOR PARTNER



**TOYOTA**

PLATINUM  
PARTNERS



GOLD  
PARTNERS



\*T&C's apply, see [tryathlon.co.nz/event-policies/](http://tryathlon.co.nz/event-policies/)

\*\*To be eligible, your school needs to have the following number of participants linked to your school group:  
15+ for a school roll over 100, 10+ for a school roll between 51-100 or 5+ students for a school roll under 50.

Arohena School looks forward to participating in the  
Cambridge  
Weet-Bix KIDS TRYathlon



# AG COMPLIANCE SOLUTIONS

- Manage compliance paperwork for Dairy Company requirements
- Bridging the gap between Sharemilkers & Owners
- Farm House inspections
- Farm House Meth-Testing
- Health & Safety Manuals
- Herd & Nait Auditing
- Farm Policies & Procedures manual

*"Making Compliance Simple"*



**027 492 0987**



**info@agcompliancesolutions.nz**



# COMMUNITY NOTICEBOARD

## Playcentre

Arohena Playcentre  
Tuesday 9:30am - 12noon

Queries to Judy  
027 493 0845

Come and join us for coffee  
and conversation

## School Bus Information



If your child/ren is not  
travelling on the school bus,  
please CONTACT Neville or  
Noelene to let them know -  
even if this is due to a school  
event.

Phone or txt:  
021 160 7268  
or  
027 814 8865

Due to tight time constraints  
your child/ren will need to be  
at their bus stop 5 minutes  
early. Our drivers will be  
unable to wait for children  
who are late to their stops.



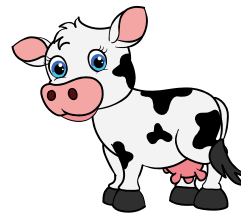
## STOCK SCHEME

The Arohena School stock scheme is  
here to help raise funds for our  
school.

These funds will help our students  
with the purchases of educational  
resources and development of the  
school.

We have many families that have  
been supporting the stock scheme  
for years and we are very grateful to  
all of them.

We invite you to donate to our stock  
scheme by contacting Cameron Te  
Brake  
027 344 2213



## Otorohanga District Council

Our councillor to represent the  
Wharepuhunga ward is  
Shane Carr.

# Please support our sponsors!

**HOOF-IT**  
WAIKATO HOOF TRIMMING

**Got questions?**  
Call Stuart on 021 278 8278  
or email [info@hoofit.nz](mailto:info@hoofit.nz)

- Hoof Trimming
- Electric & Manual Crushes
- Biosecurity Procedures
- Hoof Care Products

[WWW.HOOFIT.NZ](http://WWW.HOOFIT.NZ)



**Fieten Motor Services**  
A' GRADE SERVICE

PHONE. 07 872 2560  
WHAREPAPA SOUTH



**King Country  
Drilling Contractors**

For all your Drilling Requirements  
30 years of drilling in the king country / Central Plateau  
\*Offal \*soak \* Foundations \* Rubbish \* Lined Soak Holes \* Surface Wells  
- Concrete Products Available -  
**IF IT'S A HOLE WE'LL DRILL IT**

0508 HOLES DUG      Steve Colson  
465      373      Owner Operator / 4WD Unit



**FINCH**  
CONTRACTING LTD.

**GROUNDSPREADING** We've got it covered...  
• SPECIALISED • LOCAL • EXPERIENCED  
"the knowledge, the know how, the smile"



**Team WEALLEANS**  
Nutrient Application Specialists

Robert Hayward, General Manager,  
Team Wealleans  
Phone 07 872 4701

**THE HONDA SHOP**

462 Ohaupo Road  
ph (07) 871 7317  
Shane 021 740 890  
[shane@thehondashop.co.nz](mailto:shane@thehondashop.co.nz)  
[www.thehondashop.co.nz](http://www.thehondashop.co.nz)




**C-DAX**

**paperplus TOYWORLD**  
Locally owned. Friendly people. Great advice. where the best toys come from

**55 Arawata Street, Te Awamutu**

We have Stationary, Books, Gifts, Toys  
and Postal Services.

Open Wednesdays and Saturdays until 6pm

Phone : 07-871-5257  
Email : [teawamutu@paperplus.co.nz](mailto:teawamutu@paperplus.co.nz)




**EDWARDS ENGINEERING  
SERVICES LTD**

- + Cow Shed Repairs and Maintenance
- + Onsite Repairs and Maintenance
- + General Engineering
- + Structural Engineering
- + Machining
- + CNC Profile Cutting
- + CNC Pressing/ Folding

[www.edwardsengineering.co.nz](http://www.edwardsengineering.co.nz) | 078716560 | 0273291397