

STAR ATTENDANCE

Attendance Matters at Ilminster

At Ilminster Intermediate we believe every day at school matters. Regular attendance supports learning, friendships, confidence, and wellbeing and helps our students live our Simply the Best values.

To make sure every child is supported to attend school regularly, we follow a structured attendance plan used by schools across Aotearoa. This helps us notice patterns early and work alongside whānau when attendance becomes a concern.

Our shared goal

We aim for students to attend school at least 90 percent of the time, as this gives them the best opportunity to succeed socially and academically.

We understand that illness, family circumstances, and unexpected events happen. What matters most is staying connected so we can support your child's return to school.

Working together

Attendance is strongest when school and whānau work as partners. If you are finding it hard to get your child to school, please reach out, we are here to help.

Together we can ensure every learner is safe, supported, and ready to thrive.

What this looks like in practice

Daily safety checks:

Teachers mark attendance every morning and afternoon. If a student is absent and we have not heard from whānau, our office team will contact home to make sure everything is okay.

Early support:

If we notice a pattern of absences or lateness, we will reach out to talk with you. Our goal is always to understand what is happening and work together on solutions.

Extra help when needed:

For students with ongoing attendance challenges, our Attendance Officer and Centre Teachers work with whānau to create a supportive plan. This may include removing barriers, strengthening routines, or connecting with outside support.

Parent and whānau responsibilities:

Strong attendance is a partnership. We ask whānau to:

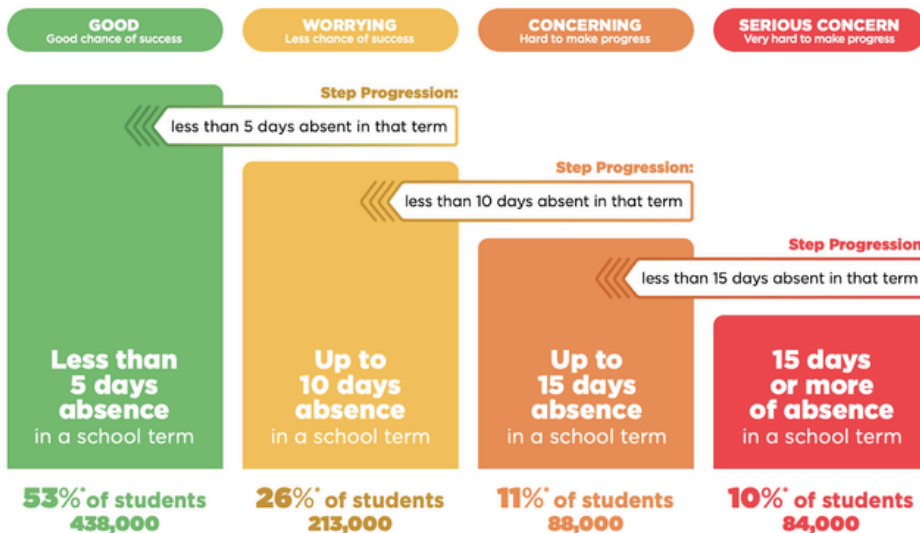
- Notify the school as soon as possible if your child will be absent — phone, HERO message, or email are all fine.
- Provide a reason for the absence so records stay accurate.
- Support regular morning routines that help children arrive on time.
- Avoid keeping children home for non-essential reasons.
- Stay in communication if attendance becomes difficult — we are here to support, not judge.

Clear communication helps us ensure every student is safe and accounted for each day.

Stepped Attendance Response – STAR

Responding to all absences

The Government's target is for **80% of students to attend regularly**, that is to attend school more than **90% of the time**.



* These approximate numbers of students are based on the numbers of students in the regular attendance categories in Term 2 2024.

