

**Kia ora, Ilminster hāpori and whānau!**

It's hard to believe we are already halfway through the term—these weeks are disappearing fast!

We would like to acknowledge the recent incident regarding school lunches. This was an unfortunate situation, and we want to reassure our school community that all necessary steps were taken by staff at the time. As a result, we have reviewed our own processes and welcome the outcomes of the internal review being conducted by the Ministry of Education and our lunch supplier, Compass.

It has been great to see the continual improvement in school uniform standards, there is still work to be done but we are getting there. A gentle reminder that while the mornings are getting cooler, trackpants are not permitted until Term 2, and they must be the navy Canterbury versions. Also, socks with sandals are not allowed, if students have cold feet, they should wear the appropriate shoes to school. Let's continue to uphold our high standards.

The safety of our students is our top priority. We ask all students to use the designated crossings when walking to and from school. If you are picking up your child after school, please do not park on the yellow lines at the front of the school. If using the bus bay for pick-up, do not pull out in front of the buses—please give way as they are pulling out. Your cooperation ensures the safety of all our children.

Looking ahead, we encourage all whānau to attend our Mātauranga / Connections Evening on Thursday, 13th March, at 5:30pm. This is a fantastic opportunity to connect with your child's Mātauranga and Connections teachers, gain insight into how their learning happens, and provide a better understanding of how these programs work.

Lastly, it has been fantastic to see so many students stepping up to play touch rugby this season. Thank you to our whānau who have stepped up to coach these teams and provide this opportunity for our students. Good luck to all our players competing this Saturday—play hard, but always play fair!

Noho ora mai rā, Stay safe and have a great weekend.

Jonathan Poole  
Tumuaki/Principal

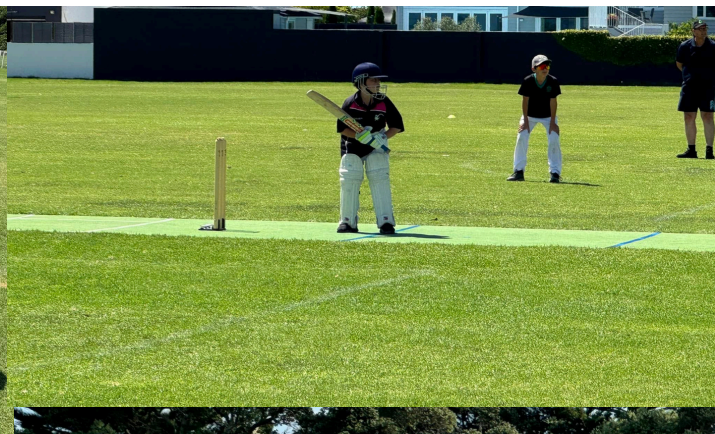




# ILMINSTER IN ACTION

## *Super 11 Cricket*

Our cricket team recently traveled to compete in the Super 11 Cricket Tournament, facing tough opposition from across the Bay of Plenty and Gisborne, giving it their all on the field. Congratulations to all the students who participated, showing great determination and sportsmanship while learning valuable lessons along the way. A huge thank you to Mr. Mike Hope for his dedication in coaching the team and helping them improve their skills. We also appreciate Mr. Simmons for his efforts in organizing this opportunity for our players to compete and grow!

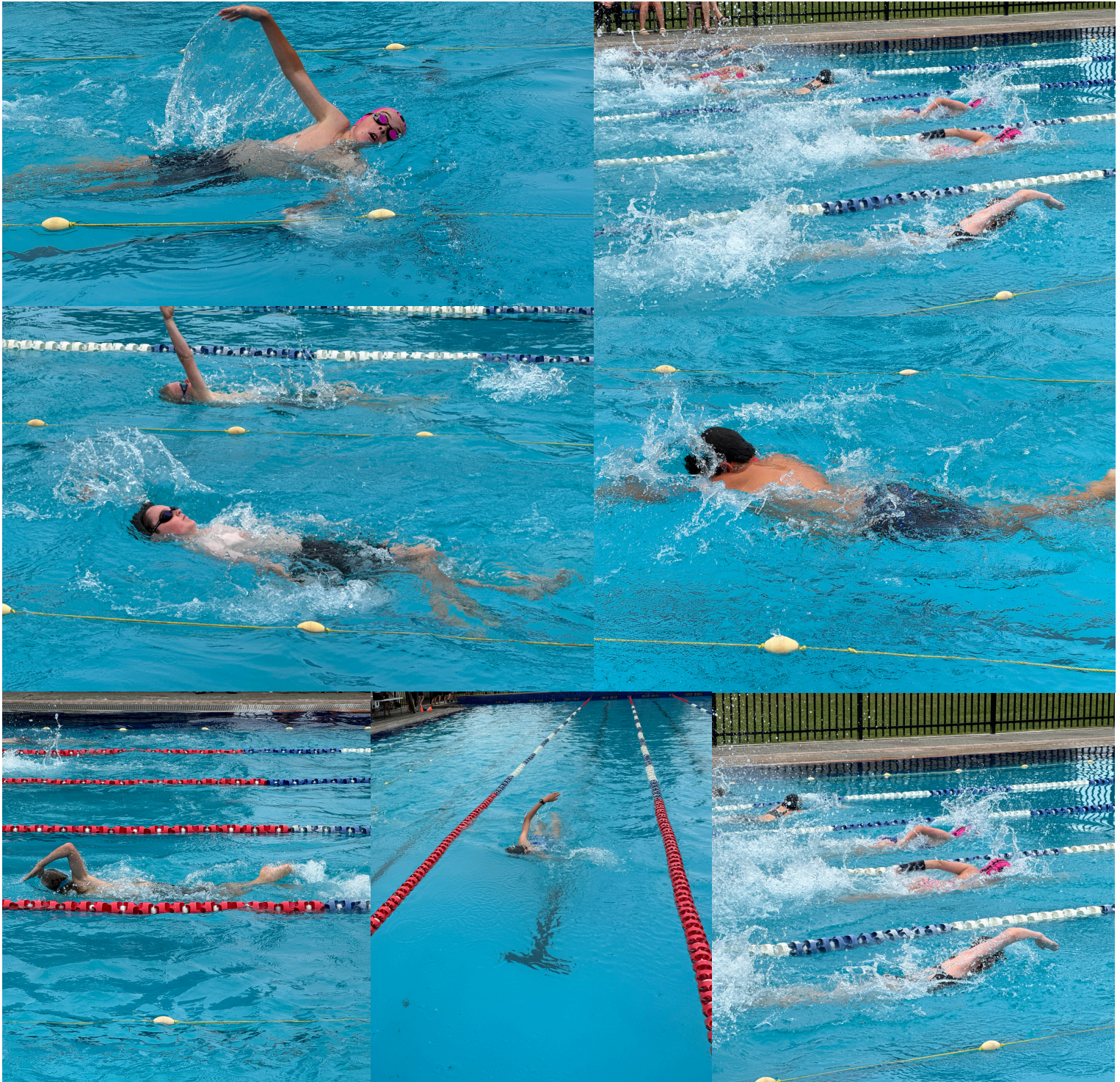




# ILMINSTER IN ACTION

## *School Swimming Sports*

Congratulations to all the students who participated in the school swimming sports! Your enthusiasm and effort in taking on this challenge was fantastic. A huge thank you to Mr. Bull for his dedication in organizing such a fantastic event. Well done to everyone for making it a fun and memorable event!





# ILMINSTER INTERMEDIATE

## School Uniform

We want our tamariki to look 'SIMPLY THE BEST'. Wearing a school uniform fosters a sense of unity among our students, instilling pride in our school community and themselves. It is essential that the uniform must be worn correctly at all times.

### *DAILY UNIFORM*

Students **must** wear this to school **daily**.

#### Polo Shirt

- Regulation Cerise Ilminster polo shirt.

#### Shorts

- Regulation Ilminster dress shorts - navy blue, above the knee.

#### Track Pants (Term 2 and 3 only)

- Regulation Ilminster Navy (without stripes/bands).

#### Shoes

- Plain black, below the ankle( no high tops) shoes with no colour (this includes black laces).
- Plain black sandals, worn correctly with backstrap and no straps above the ankle. No socks with sandals.
- Jandals, slides or crocs are NOT permitted.

#### Socks

- Ilminster school socks or dark blue/black ankle socks- (quarter socks, low-rise socks or shorties, ankle socks show above your shoes, but only a little bit- they do not go above your ankle).

#### Sweatshirt

- Regulation Navy Blue (optional).

#### Jacket

- Regulation Ilminster Jacket (optional).

### *PE UNIFORM*

Students **must** bring this to school **daily**.

#### PE Shirt

Regulation Ilminster shirt.

#### PE Shorts

Regulation Ilminster shorts - navy blue, above the knee.

#### Swimwear

- Swimming shorts (not below the knee) only are to be worn in the pool.
- Boys - no boxer shorts / underwear in the pool.
- Girls - full togs, no bikinis. Rash-vests and swimming shorts permitted over garments.
- PE uniform is not to be worn as swimwear.

### *OTHER ASPECTS OF UNIFORM*

#### Jewellery

Small plain studs are optional for ears only. A taonga maybe worn. No other jewellery is permitted.

#### Hair

Hair must be kept tidy at all times, long hair needs to be tied for when attending connections for health and safety purposes.

#### Hats

- Students are strongly encouraged to wear a sun hat outside. Plain navy or black hats only.
- Hats to be worn the correct way around and both hats and beanies removed when indoors.
- Plain navy / black / dark blue beanies are permitted in terms 2 and 3.

#### Make-up

**NO** make-up (including tinted lip balms and fake eyelashes) or coloured nail polish permitted.

#### Thermals / Long Sleeves

If you are wearing these items, they must be under your regulation school uniform and not visible.





# ILMINSTER INTERMEDIATE

## Key Dates Term One 2025

**13th March** - 5:30pm Mātauranga / Connections Whānau Evening

**14th March** - House Competition Day

**28th March** - Teacher Only Day

**7th April** - Board Meeting

**11th April** - Last Day of Term

Note: Depending on circumstances we may not attend all events. Dates are subject to change.

# ILMINSTER INTERMEDIATE

## Super 11 Sports Term One

Ilmminster Intermediate has the opportunity to participate in over 30 Super 11 events throughout the year, hosted by intermediate schools across the Bay of Plenty and Poverty Bay regions. These are typically one-day competitions, with teams sometimes traveling and staying overnight near host schools for events outside Gisborne. We welcome expressions of interest for coaching these exciting and competitive events, which provide valuable opportunities for student growth and teamwork. While we aim to involve as many students as possible, selection is based on team requirements and event criteria.

WEEK	EVENT	DATE	WHERE	HOST SCHOOL
6	SURFING	FRIDAY 7th MARCH	MT MAUNGANUI	MT MAUNGANUI INT
7	TENNIS	FRIDAY 14th MARCH	WHAKATANE	WHAKATANE
8	SWIMMING	FRIDAY 21st MARCH	ROTORUA	KAITAO INT
10	TOUCH RUGBY	FRIDAY 4th APRIL	ROTORUA	MOKOIA INT

# ILMINSTER INTERMEDIATE

## Office hours and Afterschool pick ups

**OFFICE HOURS ARE 8AM TO 3PM MONDAY TO FRIDAY**

Please make arrangements for your child to be picked up from school by 3pm unless you have made prior arrangements with the office.

