

KAIMAI KORERO

N# 5 TERM 2 WEEK 5 2025



Strive and Honour

Ngā mihi nui ki a koutou - Greetings to you all

There has been a lot in the news since the budget regarding education and future plans. One of the recent articles that has come through, is about attendance, achievement and assessment. This is a piece out of the Bulletin for School Leaders, Issue 194, 20 May, from the Ministry of Education.

Supporting attendance during winter

Regular school attendance is vital for learning, social development, and overall wellbeing. As we enter the winter, there will naturally be times when it is appropriate for tamariki to stay home and recover from illness.

However, minor symptoms do not always require time away from school. Below is a link to information that will help parents and caregivers decide when it is okay to send their child to school, when they should keep them at home, and when they should contact a health professional for advice.

[Knowing if your child is well enough to go to school – Ministry of Education](https://info.health.nz/keeping-healthy/healthy-homes-environments/knowning-if-your-child-is-well-enough-to-go-to-school-guidance-for-parents)
guidance for parents and caregivers

Going to school every day is important for all school aged tamariki (children). It helps build their confidence and social skills, and to achieve their education and life ambitions. This information helps you decide when it is okay to send your child to school, when you should keep your child at home and when you should contact a health professional for advice. Check the website below:

<https://info.health.nz/keeping-healthy/healthy-homes-environments/knowning-if-your-child-is-well-enough-to-go-to-school-guidance-for-parents>

On this page

- [When your child has symptoms but can still attend school](#)
- [When to keep your child home to get well, and for how long](#)
- [Infectious diseases that can spread easily at school](#)
- [Sending your child back to school](#)
- [How to keep your whānau healthy](#)
- [Who to contact for health advice](#)
- [Online health information and self help resources](#)
- [Healthcare services and contacts](#)
- [Anxiety and school attendance](#)

Have a great week
Bronwyn Harris
Acting Principal
principal@kaimai.school.nz



KAIMAI KORERO

TERM 2 WEEK 5 2025



Strive and Honour



KAIMAI KORERO

TERM 2 WEEK 5 2025



Strive and Honour

IMPORTANT INFORMATION!



SchoolDocs
Policies and Procedures

We use School Docs for our policies and procedures. <https://www.schooldocs.co.nz/>
Search Kaimai School then use the username-Kaimai password-growth
You can review policies that require review this term.

Tuesday 10 June - Western Bay Cross Country Champs
Monday 9 - Wednesday 11 June - Senior tech at Taumata School
Thursday 12 June - Year 7-8 Trip to Fieldays
Wednesday 18 June - Matariki Celebration Kai
Friday 20 June - Matariki
Tuesday 24 to Thursday 26 June - Life Education
Thursday 27 June - Soloist Auditions for Music festival
Friday 27 June - Term 2 Reports Home
End of Term 2

2026 Approximate Term Dates

Term 1 (up to 10 weeks)

Starts between Monday 26 January and Monday 9 February and ends Thursday 2 April 2026 (78-96 half days).

Public holiday: Waitangi Day - Friday 6 February.

Term 2 (11 weeks)

Monday 20 April to Friday 3 July 2026 (106 half days).

Public holidays: Anzac Day - Saturday 25 April (Anzac Day observed on Monday 27 April) and King's Birthday - Monday 1 June.

Term 3 (10 weeks)

Monday 20 July to Friday 25 September 2026 (100 half days).

Term 4 (up to 11 weeks)

Monday 12 October to no later than Friday 18 December 2026 (up to 98 half days).

Public holiday: Labour Day - Monday 26 October.

Half-day opening requirement 2026

Primary, intermediate and specialist schools must be open for instruction for a minimum of 382 half days in 2026.

Secondary and composite schools must be open for instruction for a minimum of 380 half days in 2026.

Schools have flexibility to choose the start and end dates of their school year, so long as they start between Monday 26 January and Monday 9 February, and end no later than 18 December 2026.

2026 school holidays

Term 1

Friday 3 April to Sunday 19 April 2026.

Public holidays: Good Friday 3 April, Easter Monday 6 April, Easter Tuesday 7 April (a school holiday).

Term 2

Saturday 4 July to Sunday 19 July 2026.

Public holiday: Matariki - Friday 10 July.

Term 3

Saturday 26 September to Sunday 11 October 2026.

Summer holidays

Start no later than Saturday 19 December 2026 and run for 5 or 6 weeks (from school's closing date until opening date of school the following year).

KAIMAI KORERO

TERM 2 WEEK 5 2025



Strive and Honour

Ra Whānau - Happy Birthday

07 May - Hydie Marshall - Ruma Tui
12 May - Sophia Rooney - Ruma Kiwi
14 May - Daz Wadsworth - Ruma Kiwi
14 May - Jovee Marshall - Ruma Tui
14 May - Asher Marshall - Ruma Tui
20 May - Lincoln Marshall - Ruma Ruru
20 May - Jason Nicholas - Ruma Kereru
25 May - Ella Meldrum - Ruma Kereru
26 May - Matilda Skellon-Story - Ruma Tui
27 May - Mahlia Meldrum - Ruma Ruru
29 May - Teddy Jackson - Ruma Ruru

KAIMAI KORERO

TERM 2 WEEK 5 2025



Strive and Honour

Our Team!



Mrs Stewart-
Ruma Kereru



Mrs Haack
Ruma Kiwi



Whāea Amie-
Ruma Tui



Mrs Cooper-
Ruma Ruru



Whāea Kim -
Teacher's Aide



Mr H. Student
teacher
Ruma Ruru



JR (Ms Leask)-
Office Administration



Kevin -
Caretaker



Matua Mike -
Teacher's Aide

Touching Base

- If you need to touch base with your child's kaiako then we would like to hear from you.
- If you have any queries about your child, then their class teacher is the first point of contact.
- Teachers are not there to discuss other children!
- Sometimes you may be lucky enough to catch kaiako after school on the same day of your question.
- Alternatively, you can email them and ask to make an appointment at a time that suits you both.
- In your email, include what it is that you would like to discuss.
- Sometimes we may need some time to investigate a concern and may need a day or two to get back to you. It is better that we have time to get all the information and a suitable conclusion than a rushed wrong one!
- We are all here for the same reason-happy ākonga that enjoy coming to school!

Mrs Cooper Ruma Ruru
Whāea Amie-Ruma Tui
Mrs Stewart - Ruma Kereru.
Mrs Haack - Ruma Kiwi.

eilidh@kaimai.school.nz
amie@kaimai.school.nz
adrienne@kaimai.school.nz
annemarie@kai,ai.school.nz

TERM DATES 2025

TERM 1 -1 FEBRUARY TO 11 APRIL 2025

TERM 2 – 28 APRIL TO 27 JUNE 2025

TERM 3 – 14 JULY TO 19 SEPTEMBER 2025

TERM 4 – 6 OCTOBER TO 16 DECEMBER 2025

OTHER HOLIDAYS

MONDAY 2 JUNE (KINGS BIRTHDAY)

FRIDAY 20 JUNE (MATARIKI)

MONDAY 27 OCTOBER (LABOUR DAY).

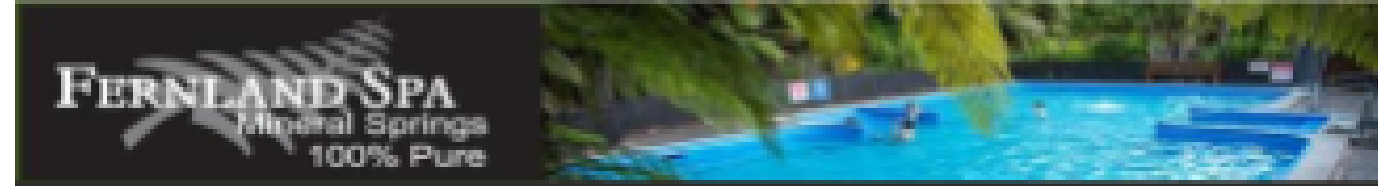
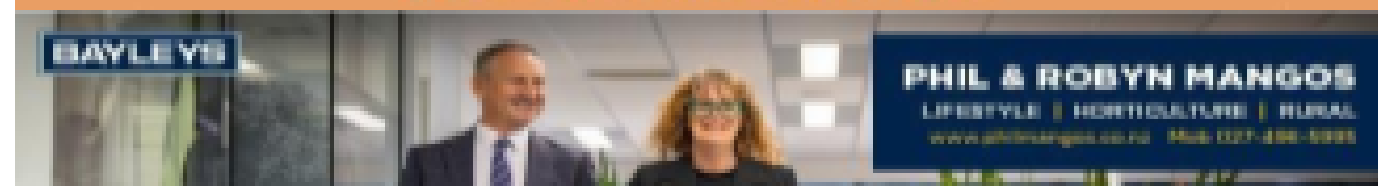
Kaimai School

Thanks to the below businesses for sponsoring our school app:



To download our app: In Google Play & App Store search 'Skool Loop' & choose School once installed.

If you would like to advertise on the Kaimai School Skool Loop App please email Content@skoolloop.com



SCHOOL BLOWER SPONSORSHIP



MT MAUNGANUI

THANK YOU

Thank you to all the businesses on this page who sponsor Kaimai School. Your contribution has enabled us to provide extra opportunities for our tamariki that would otherwise not have been possible!

If you need a service or product, please use one of the companies listed below!

Golf Day Sponsors



Thank you from us all at Kaimai School!

KAIMAI KORERO

TERM 2 WEEK 5 2025



Strive and Honour

KUPU AT KAIMAI

Here are some common words and phrases you will see and hear popping up around our school! we will keep adding to this list!

TAMARIKI - CHILDREN

ĀKONGA - LEARNER

KAIAKO - TEACHER

ĀKORANGA - LEARNING

WHĀNAU - EXTENDED FAMILY, GROUP OF FRIENDS

KA MAU TE WEHI - AWESOME

KIA ORA-THANK YOU, HELLO

TĒNĀ KOUTOU KATOA - HELLO TO YOU ALL

KEI TE PAI - WELL DONE

MORENA - GOOD MORNING

KIA ORA RAWA ATU - THANK YOU VERY MUCH

ATA MĀRIE - GOOD MORNING

TĒNĀ KOE-HELLO TO ONE

TĒNĀ KŌRUA-HELLO TO TWO

PĀNUI-READING

TUHITUHI-WRITING

PĀNGARAU-MATHS

PUKAPUKA-BOOK

PONO- INTEGRITY

TURANGAWAEWAE-BELONGING

WHAKAWHETAI-GRATTITUDE

MANAWAROA- RESILIENCE



COME to KAIMAI SCHOOL!



If you're thinking about a school for your child(ren), or know someone considering a school, then consider Kaimai School!

We have space in all Year 0-8 classes!

We have a great school where learners are at the centre of all we do!

- Small class sizes; means more focus on your child!
- Dedicated, experienced teachers who have great relationships with children!
- Buses for upper and lower Kaimai!
- A van for pick up and drop off from the Crossing.
- Huge outside areas for child to play, including a school pool!
- Extra-curricular opportunities-sports, camps and class trips!
- A supportive BoT, PTA and community!
- Strong expectations in both learning and behaviour, based on our school values!

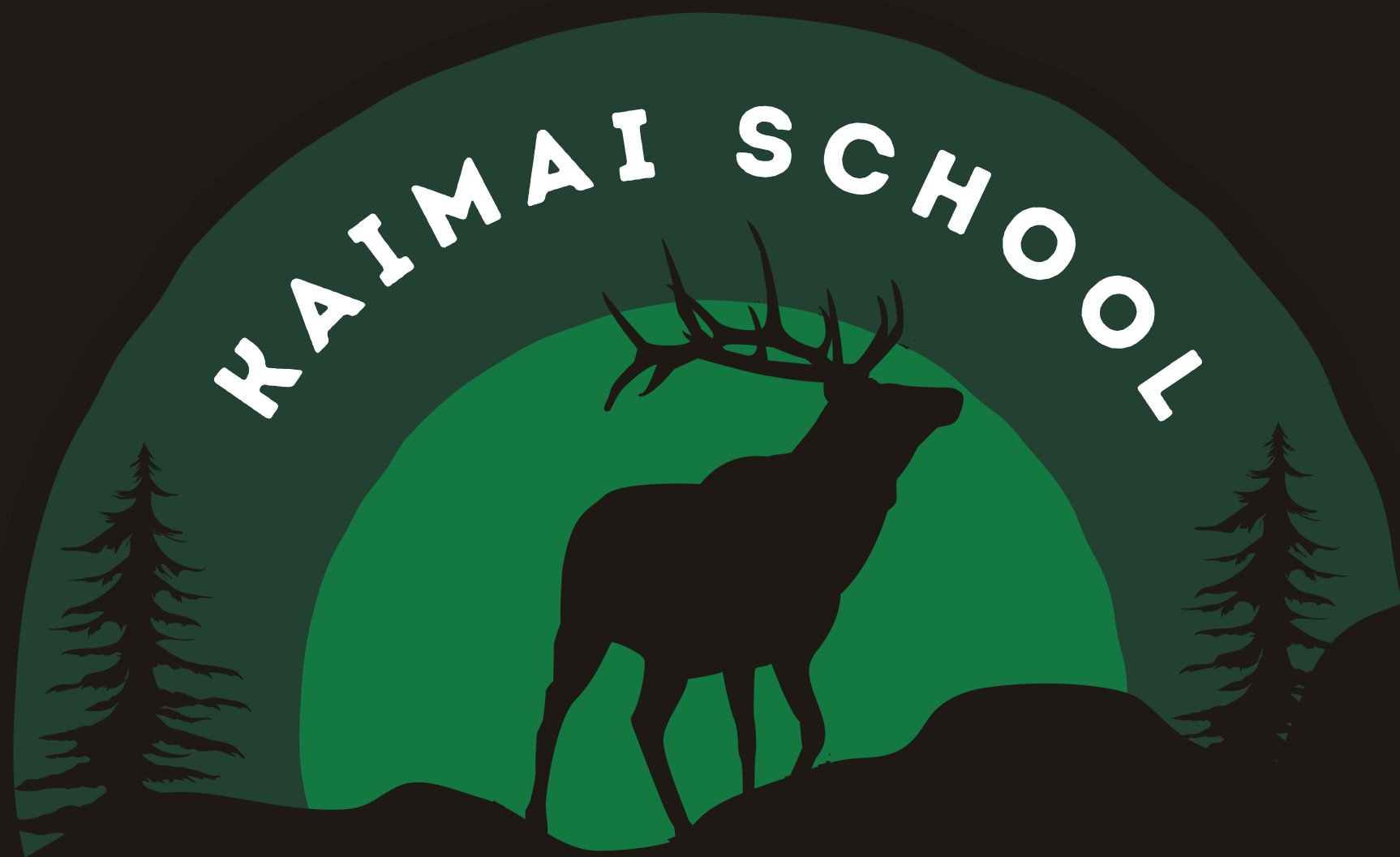
We value- B.I.G.R.

- Belonging, Integrity, Resilience and Grattitude



Please contact us on 07 543 0999 or admin@kaimai.school.nz to organise a visit.

I will be privileged to show you around our amazing school!



WINTER HUNTING COMPETITION



HUNTING



CONSERVATION



COMMUNITY

HUNTING PERIOD:

Wednesday 2nd to Sunday 6th
July

WEIGH IN

9am - 12pm Sunday 6th July

**\$2000 CASH PRIZE
POOL FOR ADULTS**

Get the whole family stuck in this winter—help protect our environment and back our awesome country school! Epic prizes, good people, and a great cause.

PROUDLY SPONSORED BY MCLAREN BUILT LTD

MB
MCLAREN BUILT LTD
Concrete & Construction

SCAN THE QR CODE TO REGISTER



MCLAREN BUILT LTD

CONCRETE SOLUTIONS.
BUILT TO LAST.

 027 975 4474

PROUDLY SPONSORED BY MCLAREN BUILT LTD

CONCRETE &
CONSTRUCTION