



Huntly Primary School

Knowledge is Power – Matauranga Maramatanga

Newsletter

Wednesday 11TH December Week 9- Term 4 School Roll – 196

IMPORTANT SCHOOL DATES

LAST DAY OF SCHOOL 2024

Tuesday 17th December @ 12.30pm – half day

**SCHOOL OFFICE open 30th January 2025 for NEW enrolments
& uniforms**

SCHOOL STARTS 2025 – Monday 3rd February 9 am – 2.45 PM

**THURSDAY – 6TH FEBRUARY – WHITANGI DAY – SCHOOL
CLOSED**

**FRIDAY – 7th FEBRUARY – TEACHER ONLY DAY – SCHOOL
CLOSED**

SUMMER UNIFORM

Term 1 our student are to wear the summer uniform

School Shorts, Polo-shirt and a **Sunhat** .

Please do not send your children in long pants, legging, or
jackets. They will get overheated. Having a water bottle to refill.



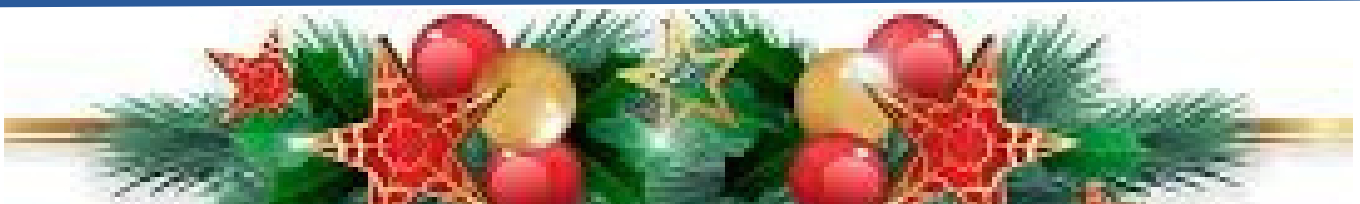
STATIONERY 2025

Our school packs will be available once again from The Lotto/Bookshop,
Main Street, Huntly from 20th January until 21st February 2025 at Back To
School prices. Available in classroom or year level groups.

TERM DATES 2025

Term 1 – February 3rd – April 11th

Term 2 – April 28th – June 27th



**Huntly Primary Staff wish all our whaanau a Merry Xmas & safe
travels. We look forward to seeing you all in 2025**



HUNTLY PRIMARY SCHOOL

Knowledge is Power – Matauranga Maramatanga

SCHOOL BOARD PANUI

Teenaa Koutou katoa

2024 has been a busy, exciting and rewarding year for our Aakonga (students), Kaiako (teachers) and our School Community as a whole.

A small group of rangitahi did Mau Raakau lessons during the year. Learning pepeha, whakapapa and kotahitanga from a Waikato Iwi, Tainui Waka perspective.

Inter- school Athletics were hosted and held at Huntly Primary School. We welcomed schools within the area, who competed in various events. This event ran smoothly and we received positive feedback.

Quote "Really nicely organised, and all children had time to finish the activity" – a parent from Kimihia School commented.

The Production "Little Monsters" was a huge success. Students showed flair, confidence, stage presence and talent. Whaanau, friends and the audience saw a completely new dimension to their child and classmates.

Teachers play an enormous role within the school. Assisting, supporting, organizing and transporting students to and from events. Giving unlimited time, passion, purpose and dedication into the educational pathway of their students.

Mana(pride), Maaia(humbleness) and Wairua(spirit) have created belief, identity and togetherness amongst students. This was demonstrated at prizewinning when a Haka Tautoko was performed to their departing year 8 students.

The Board of Trustees would like to thank students, staff and whaanau for their participation, commitment and support.

Meri Kirihimete ngaa mihi nui mo te tau hou

Ngaa mihi

Amos Ngaia

Presiding Member