



# Roseneath School Newsletter

Term 1 Week 7 - 21 March 2025

principal@roseneath.school.nz  
office@roseneath.school.nz  
043847218



## *Ma te kotahitanga e whai ai tātau*

*In unity, we have strength.*

At Roseneath we live our school values and our children know them and demonstrate them daily.

The weather is definitely autumnal with cooler mornings. Please name all outer layers of clothing so they can be returned to their owners if left in the playground.

Our annual **Mihi Whakatau** is only a fortnight away. We take this opportunity to welcome any new staff and students who have joined Roseneath School since this time last year. Matua Henare has been preparing our tamariki for the roles they will play all term. The leadership group take a lead role in the ceremony - some as kaikaranga, others as kaikōrero. Our Rōpu leaders welcome each new student by presenting them with a kōhatu or stone painted in the colour of their Rōpu.



**Aotearoa** - White  
**Kahurangi** - Blue  
**Mamaku** - Black

**Pounamu** - Green  
**Whānau Ahi** - Orange

**Movin' March** is still going strong. Joanne loves greeting and stamping the "Passports" each morning. Ask your child about any prizes they may have won with their full passports. Keep walking and wheeling to school.



Jenny and the Roseneath Team

## ANZAC Service 25 April

ANZAC Day is in the second week of the school holidays. **We still need some students to take part in the service** - some to read In Flanders Field and a couple to lay the school wreath. Please let us know if your children would be available. We will rehearse their part before the end of the term. Let me know

[principal@roseneath.school.nz](mailto:principal@roseneath.school.nz)



## 24 March Curriculum Day - School Closed

This is a day for the schools in Motu Kairangi Kahui Ako will get together to learn about the structured approach to Mathematics. Our staff will be joining other teachers at Seatoun School for the day. School is closed on this day. **Enjoy Afterschool Care will be running a day programme if you need childcare for this day.**



## Plastic and Metal Lids Recycling

We are going to make your recycling easier. Some of the New World supermarkets now have recycling bins for plastic and metal lids. We will collect these at school and drop them off. Please wash the lids and put them in the red recycling bin in the office. Nolan and Jacob in Upper Bridge are hoping there will be lots of lids dropped off as they intend to use them as part of their Wearable Arts creation.



## Samuel Marsden School Winter Project

A collection box is in the foyer beside the lost property hampers for you to donate items such as woollen beanies, scarves, jerseys, blankets, warm pants and sweatshirts, puffer jackets. All to be in good condition. These will be collected at the end of the term and distributed to schools whose students are in need of winter warmth.

### THE WINTER PROJECT

**WHO WE ARE:**  
The Winter Project is a student-led charity group run by five Year 12 students from Samuel Marsden Collegiate School in Karori. We collect second-hand winter woollens and deliver them to schools in the wider Wellington region who are in need of warmth for the cold winter months ahead.

**CONTACT US**

**FACEBOOK**  
The Winter Project

**INSTAGRAM**  
@\_thewinterproject

**EMAIL**  
winterprojectwgt@gmail.com

**WHAT WE NEED:**  
Please bring any preloved, clean, warm clothing items in good condition. These can be anything like scarves, beanies, gloves, blankets, jerseys, tops, jackets, raincoats, puffers, warm pants or shoes. There will be a box placed somewhere around the school to put your items in. Thank you for your help!

## Enjoy Childcare - Holiday Programme

Book in for the holiday programme.

**enjoy Childcare**

- OSCAR approved
- Morning and Afternoon tea provided
- Trained and Experienced Supervisors
- Exercise sessions every morning
- Quiet spaces available
- Drop off service at the end of the day for a small additional fee.

Standard days: \$50.00 per day/child  
Trip days: \$55.00 per day/child  
\*discounts available

7.30am OPEN  
Roll call, Fun-Fitness  
Morning tea  
9.30am - 2.30pm  
Special holiday programme activity, Lunch  
2.30pm - 5.50pm  
Afternoon tea, Games & Play  
6.00pm HOME TIME  
more details online

**AUTUMN HOLIDAY PROGRAMME**  
14 - 25 APRIL 2025

**Centres:**  
1. St Bernard's school hall (40 Taft Street, Brooklyn) 027 36569 (ENJOY) 01  
2. Ridgway School (120 Mornington Road, Brooklyn) 027 36569 (ENJOY) 02  
3. Berhampore school hall (105 Britomart St, B pore) 027 36569 (ENJOY) 03  
4. Owhiro Bay school hall (96 Happy Valley Rd.) 027 36569 (ENJOY) 07  
5. Roseneath School hall (13 Maids Vale, Roseneath) 027 36569 (ENJOY) 06

\*\*enrollment numbers will determine how many centres will operate. See enrolmy.com/enjoy-childcare for confirmation of which centres are operating during this holiday programme.

Mon 14 Apr	Tues 15 Apr	Wed 16 Apr	Thurs 17 Apr	Fri 18 Apr
Autumn Garden Arts & Crafts	Trip Day: Swimming Day	Hot Cross Buns & Easter Activities	Trip Day: Picnic at Central Park	Good Friday Centre Closed
Closed for the Public Holiday	Trip Day: Zealandia	Doughnut Making & Obstacle Course	Trip Day at the movies	ANZAC DAY Centre Closed

Please be prepared that the above programme may be adjusted if necessary ie: alert level restrictions.

Book at [enrolmy.com/enjoy-childcare](https://enrolmy.com/enjoy-childcare)  
or follow the booking links on our website [www.enjoychildcare.co.nz](https://www.enjoychildcare.co.nz)  
email enquiries to [admin@enjoychildcare.co.nz](mailto:admin@enjoychildcare.co.nz)

## Friends Thursday Sausage, Hot Chocolate and Jelly

Friends will be sizzling sausages, mixing up hot chocolate and jelly on the following Thursdays this term. **27 March & 10 April.**

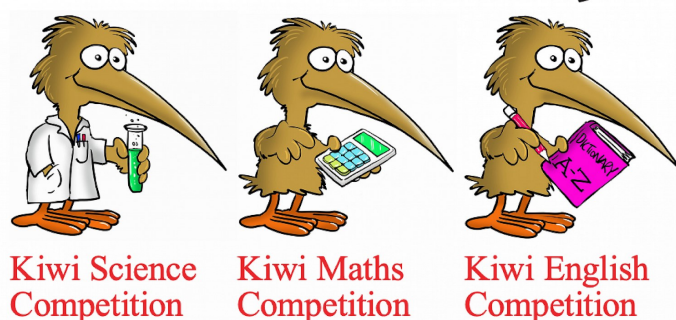
Please place orders with Joanne by the Wednesday before.

## Great Kiwi Competitions 2025

We are offering the opportunity for students in Years 5-8 to participate in the Great Kiwi Competitions this year.

Here is a link for further information about the [Great Kiwi Competitions](#)

Let me know if you would like to enter.  
There is also a Great Kiwi Spelling Bee.  
[principal@roseneath.school.nz](mailto:principal@roseneath.school.nz)



Designed by NZ teachers for Kiwi students based on NZ curriculum.

## Lunch Orders

**Monday - Vietnamesy** - order on Lunchesonline

**Tuesday - Sushi** - order on Lunchesonline

**Friday - PitaPit** - order on Lunchesonline

**Wednesday - Dominos** - order through the school office

**Snack size Pizza** - \$7

**Large Meltzz** - \$7 Butter Chicken; Ham & Cheese; Pepperoni

**We are considering changing to Subway on Monday or Friday and would appreciate your feedback. Thanks to the families that have already replied.**



## Assemblies 2025 - even weeks Friday 9.05am

School assemblies will be held in weeks 8 & 10 this term. All whānau are welcome to attend starting at 9.05am. Classes will take turn to host and we will advertise which class is hosting the week before.

**Assembly dates Term 1: 28 March, 11 April**

## Te Reo o te wiki

Each week we thought we would share a te reo phrase or kupu with you that you could use at home.

**He aha koe?**  
*What are you doing?*

**I aha koe?**  
*What did you do?*

**Ka aha koe?**  
*What will you do?*

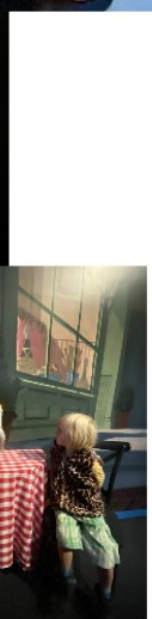
## Pupil Statements

Statements have been sent out this week, please let the office know if you have not received one or you have any questions. Thank you to all the families that have already paid. You may like to set up a payment plan with Joanne.



Our Mahi from Aft

# AFT CLASS went to the Disney exhibition!





# ★ The 7 Habits of a Positive Parent ★

## 1. Connect Before You Correct

When we **connect**, kids move from a defensive, reactive state to a receptive one.

"Come here for a hug. You seem to feel very strongly about this. Tell me more."

## 2. Ask for help when you need it

You'll get the support you need and model the importance of **speaking up**.

"I took on a lot this week. I will see if my friend can help me out."

## 3. Make time for yourself

Our children will never choose to give us a break. We need to make sure our **needs are met**.

"I need time to relax for ten minutes. I will be available after."

## 4. Set firm boundaries

Clear boundaries help children thrive and make parenting easier.

"My answer is no. You're free to disagree."

## 5. Stay flexible

Be open to changing your mind. Try **new approaches**, and find what works for YOUR family.

"I would like to try something different tonight. Before we read a book, let's talk about our day."

## 6. Lead with love

When we **connect**, kids move from a defensive, reactive state to a receptive one.

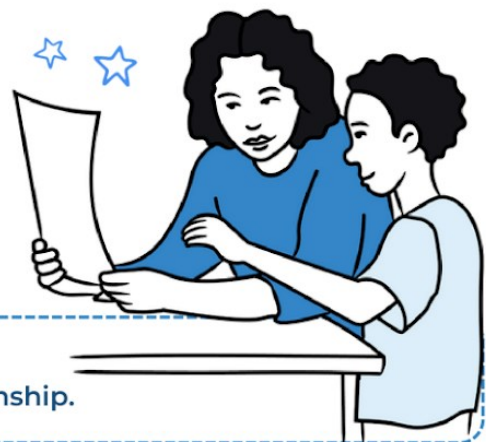
"Come here for a hug. You seem to feel very strongly about this. Tell me more."

## 7. Be an active listener

Connect and ask questions instead of making assumptions.

"Thank you for sharing that with me. I want to talk more about this to understand your perspective."

When you adopt these positive parenting habits you build a deeply connected parent-child relationship.



New Zealand

**Sotheby's**  
INTERNATIONAL REALTY

# Thinking of selling?

Sell with the world's premium real estate brand, or refer a friend who does, and we will donate \$2,500 to Roseneath School. **Contact us today.**

Licensed REAA 2008

**GLEN JONES** — 021 221 9393 | glen.jones@nzsir.com

## Community Notices

**INNER CITY ART STUDIO**  
**School Holiday Art Workshops**  
For kids that love art

**A Day of Clay Beginners Hand Building**  
1 day beginners clay course, April, 14th 9am-3pm  
**A Day of Clay 2 Beginners Clay** April 16th, 9am - 3pm.  
Ages 8-14 Cost \$130 materials included

**Sculpted Animal Dish** - Students Learn Sculpting methods turning 2D images of an animal into a fabulous 3D ceramic animal Bowl  
1 day course, April 15th, Ages 10-15 years old, 9am - 4pm, Cost \$150 materials inc.

**Dreamscape Diaramas** Create your own world in 3D, Painting and sculpting in mixed materials, 1 day course April 17th, 9am-4pm, Ages 8-14, costs \$135 incl materials

**French Cafe and Art Scene** - Drawing and inking like the masters  
1 day course, April 22nd, 9am - 3pm. Ages 8-14  
Cost \$90 materials and a hot chocolate included

**Animal Botanical**  
Painting an animal into a botanical scene the studio will be filled with flowers to observe and draw on large paper  
1 day course, April 23rd 9am - 4pm, Ages 8-14  
Cost \$90 materials Included

**Clay Creatures** - Scientifically study an insect and recreate it in clay  
1 day course, April 24th 9am - 3pm.  
Ages 11-15 Cost \$90 materials included

All bookings and enquiries  
www.innercityartstudio.com, Innercityartstudio@gmail.com,  
FB: @InnercityArtStudio Insta: @innercityartstudio Ph: 0226407506  
Paintings and sculpture on this poster made by kids (the turtle and clay was made by the tutor)

**Wairarapa Balloon Festival**  
Easter 2025  
**FAMILY CARNIVAL**  
SATURDAY 19 APRIL

5 hours of action-packed entertainment for the whole family. Plus live music, food trucks and much more.

**TICKETS AND DETAILS**  
[www.nzballoons.co.nz](http://www.nzballoons.co.nz)

Air balloon walk-throughs  
Live music  
Bouncy Castles  
Face Painting Zone  
Easter Egg Hunt  
Selection of market stalls  
The magical night balloon performance - lit up to music  
Delicious food and beverage options from Street Food vendors  
An unforgettable experience  
Gates Open 3pm. Entertainment

## Phoenix Holiday camp

For further information including how to register please visit: <https://wellingtonphoenixacademy.com/experience>



## Get creative at Katherine Mansfield House & Garden!

Are you a 10-14-year-old who loves writing? Find inspiration and learn new tools for getting creative at our April School Holidays creative writing workshop.

Morning session: 14 April, 9.30am to 12.30pm  
Afternoon session: 14 April, 1.30pm to 4.30pm

Or make a day of it and register for both! \$25 per session, includes snacks, writing materials and a qualified tutor.

Find out more and register at  
[www.katherinemansfield.com](http://www.katherinemansfield.com)

**SCHOOL HOLIDAYS**  
Creative Workshops for Young Artists  
Spend your next school holidays with Inverloch Art School!

**Children's & Young Artists' Holiday Programmes**

**FOR AGES 6-10 YEARS:**  
MON, THURS, 14-17 APRIL 9:30-11:30 DAILY

**FOR AGES 10-14 YEARS:**  
MON, THURS, 14-17 APRIL 12:30 - 2:30 DAILY

**Creative Sewing for Teens**  
FOR AGES 10-15  
WEDS - THURS, 16 - 17 APRIL 10 AM - 12:30 PM DAILY

**Pottery Wheel Throwing for Teens**  
FOR AGES 12+  
TUES - WEDS, 15 - 16 APRIL 10 AM - 11:50 AM OR 1 - 2:30 PM DAILY

**Jewellery Making for Teens**  
FOR AGES 15+  
TUES 15 APRIL 10 AM - 1 PM

**Creative Writing for Teens**  
FOR AGES 12-17  
MON-THURS, 14-17 APRIL 10 AM - 1 PM DAILY

**Whānau Sculpture with Clay**  
FOR TAMARU AND THEIR CAREGIVERS  
MONDAY 14 APRIL 10 AM - 12 PM  
WEDNESDAY 16 APRIL 1 PM - 3 PM  
SUITABLE FOR AGES 4+

**TERM TWO After-school Sessions**  
Starting from 28 April

**YOUNG ARTISTS AFTER SCHOOL**  
MONDAYS, 5:30 - 6:15 PM

**POTTERY FOR TEENS & TEENS**  
MONDAYS, 5:45-5:15 PM

**FUNDAMENTALS OF DRAWING FOR TEENS AND TEENS**  
TUESDAYS, 5:45-5:15 PM

[www.inverloch.org.nz](http://www.inverloch.org.nz) • [inverlochartschool@gmail.com](mailto:inverlochartschool@gmail.com) • 04 939 207



PUKEAHU | NATIONAL WAR MEMORIAL PARK



**Free Event**

# Pukeahu Play Festival 2025

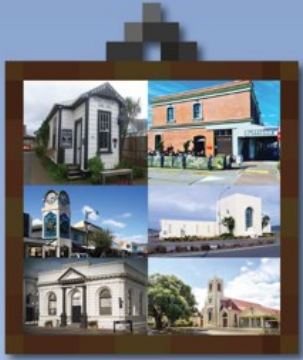
**Saturday, 22 March, 12pm—4pm**  
Pukeahu National War Memorial Park

Nau mai tamariki and whānau! Let's celebrate Wellington's cultural diversity through the power of play, in the heart of Pōneke.

**Pārekareka** **Absolutely Positively** **Manatū Taonga**  
Wellington City Council Ministry for Culture & Heritage

# MINECRAFT

*Build Competition!*



**Build one of six iconic Petone buildings in Minecraft**

Jackson Street Programme Office | Caffiend | La Villa Hairdressing | Petone Clock Tower  
Petone Settlers Museum | St. Augustine's Church

**\$100 prize to the winner of the Building Competition**

Winners will be notified via email

**Building Competition runs from 11th April - 27th April**

For further information contact the Jackson Street Programme | Phone: 04 939 2811

DISCLAIMER: THIS PROMOTION IS NOT AFFILIATED WITH, ENDORSED BY, OR SPONSORED BY MOJANG STUDIOS, MICROSOFT, OR MINECRAFT. ALL TRADEMARKS, LOGOS, CHARACTERS, AND BRAND ELEMENTS ARE THE PROPERTY OF THEIR RESPECTIVE OWNERS.

## KIDS AUTUMN ART HOLIDAY PROGRAMME

Whether you are working or just need a break, TLC's Kids Art Holiday Programme is timed just right to keep your kids happy, engaged & having creative holiday fun!


**Times:** 9AM to 3PM **Cost:** \$65.00 per day **Age:** 5 to 13 year olds

**WEEK ONE: MON 14TH TO THURS 17TH APRIL**

MONDAY	TUESDAY	WEDNESDAY	THURSDAY
 <p><b>LEAF SPRAY PAINTING</b></p> <p>Let nature spark creativity! In this hands-on activity, young artists can arrange leaves on paper and spray colourful paints. Lifting the leaves reveals beautiful negative images of the leaf shapes surrounded by vibrant colours. <i>Who knew nature could look so artistic?</i></p>	 <p><b>FANTASTICAL HOUSES</b></p> <p>Your child's dream house just got magical! They will use their creativity to design a whimsical house. With all sorts of art supplies, they'll craft a home that's as fun and fantastical as they can imagine. <i>Fairy cottages, castles in the sky – what will your child create?</i></p>	 <p><b>AIR DRY CLAY JEWELLERY</b></p> <p>Is your child ready to create one-of-a-kind jewellery that's as unique as they are? In this fun activity, they'll shape and mold air-dry clay into beautiful, custom pieces. Whether it's rings, necklaces, or bracelets, your child will craft something special to wear and show off!</p>	 <p><b>AUTUMN EMBROIDERY</b></p> <p>Create an autumn wonderland using soft felt, colourful threads, beads, and wool! Your child can design beautiful scenes or animals, allowing for creativity and self-expression in a fun, hands-on activity. <i>What cosy and colourful creation will they bring to life?</i></p>

182 Eastern Hutt Road, Lower Hutt, 5019  
To book your child's space head to [www.tlc.ac.nz](http://www.tlc.ac.nz)

## LEAPING LIZARDS SCHOOL OF DANCE



**Wellington's Leading Recreational Dance School**

Classes in Jazz, Hip Hop, Ballet, Lyrical, Tap and Pre-School Classes. Ages 2+ Girls and Boys.

**Churton Park, Johnsonville, Wellington City**  
Phone Lorna 021 177 0685  
[leapinglizardsdance@outlook.com](mailto:leapinglizardsdance@outlook.com)  
[www.leaping-lizards.co.nz](http://www.leaping-lizards.co.nz)

## Wellington Harriers Children's Cross Country

Our Open day is Saturday 5th April at 1.45pm.

We meet at that the Wellington Harrier Club rooms on Alexandre Road Mount Victoria.

The season will start with a relay (Donaldson Memorial) near our club rooms on Mt Victoria. This relay race is a fun introduction with mixed teams of adults and kids, laps are about 1.5k, and new members are very welcome to come along and give it a go!