

*Na to rourou, na taku rourou, ka ora ai tatou.*



# LAKE ROTOMA SCHOOL

Week 1 Term 1 - 2025

## PRINCIPAL'S PANUI



Kia ora koutou,

Welcome back to another exciting term at Lake Rotoma School! We hope you all enjoyed a wonderful break filled with quality time spent with family and friends. Whether you spent your holidays exploring new places, relaxing at home, or enjoying the beauty of our local environment, we trust it was a time of joy and rejuvenation.

A special warm welcome to our new whānau and students who have joined us this term. We are thrilled to have you as part of our Lake Rotoma community. We encourage you to get involved, make new friends, and feel at home in our school.

This term, we are focusing on **TUAKIRITANGA**, embracing our identity and the importance of Te Tiriti o Waitangi (the Treaty of Waitangi). We will explore its significance in our history and how it shapes our community today. Through various activities and discussions, we aim to deepen our understanding of our cultural heritage and promote respect and inclusivity among all students.

### Upcoming Events

We are excited to announce our first major event of the term—the **Duathlon** hosted by Rotoiti Kura on **Wednesday, 12 February, from 10 AM to 1 PM**. This is a fantastic opportunity for students to participate in a fun and active day, showcasing their athletic abilities. More details will be provided soon, so mark your calendars!

### Important Reminders

**School Uniform:** Uniforms can be purchased through the school. Please visit the office for more information.

**Stationery List:** The stationery list for Otari class is available for pickup at the school office.

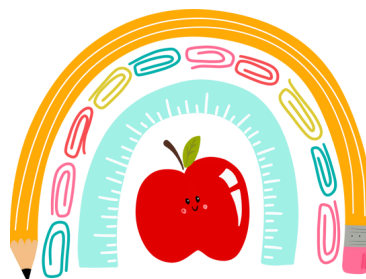
**Daily Essentials:** Please remember to bring your togs and towels every day for swimming activities.

There will also be two additional Teacher Only Days for Structured Literacy PLD; dates to be confirmed.

We look forward to an engaging term ahead filled with learning, laughter, and growth. As always, your support is invaluable, and we encourage open communication between school and home. Should you have any questions or concerns, please don't hesitate to reach out.

Wishing you all a fantastic start to the term!

Ngā mihi nui,  
TeAroha Wihapi  
Principal  
Lake Rotoma School



# 2025 SCHOOL TERM DATES

## TERM 1

- **Wed 28th Jan- Fri 11th April**  
Term Start and End date
- **Mon 20th - Tues 21st Jan**  
Teachers Call back days
- **Mon 27th Jan**  
Auckland Anniversary  
(Public holiday)
- **Wed 29th Jan**  
School opens for everyone
- **Thurs 6th February**  
Waitangi Day (Public Holiday)
- **Friday 21st March**  
Teachers only day (No school)

## TERM 2

- **Mon 28th April - Fri 27th June**  
Term Start and End date
- **Friday 16th May**  
Teachers Only day (No school)
- **Monday 2nd June**  
King's birthday (Public Holiday)
- **Friday 20th June**  
Matariki Day (Public Holiday)

## TERM 3

- **Mon 14th July - Fri 19th September**  
Term Start and End date
- **Friday 1st August**  
Teachers Only day (No school)

## TERM 4

- **Mon 6th October - Thurs 11th December**  
Term Start and End date
- **Monday 27th October**  
Labour Day (Public Holiday)

# Na to rourou, na taku rourou, ka ora ai tatou.

## WHAEA HAYLEY

Kia ora Otari whānau,

I hope your summer break was filled with fun, laughter, and special memories. Ko Whaea Hayley tōku ingoa, and I am so excited to welcome all our amazing tamariki (children) back to school for Term 1.

### This term, our focus areas include:

**Structured Literacy**- Building strong reading and writing foundations.

**Structured Maths** -Strengthening number knowledge and problem-solving skills.

**Te Reo Māori**- Deepening our understanding of Te Reo and celebrating our culture.

**Swimming** - Developing water confidence and safety in our school pool.

**Duathlon**- Encouraging fitness and resilience through fun activities.

Our overarching theme for Term 1 is **Tuakiritanga**- Identity. We'll be exploring who we are as individuals and as part of our whānau, school, and wider community. To celebrate the unique cultures and backgrounds in our class, please encourage your Tamariki to bring photos of special people in their lives—whānau, friends, or other loved ones. We'll use these photos in classroom activities to help us learn more about each other's whānau stories.

**Stationary** -Attached, you'll find the Stationery List for Term 1. Having the right tools ensures our learners can fully participate in all classroom activities. If you have any questions or concerns about the list, or need support in sourcing items, please let me know.

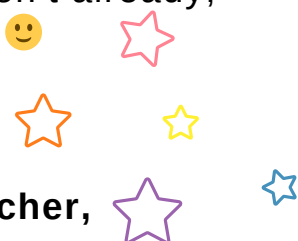


### How you can support your child's learning this term:

1. Daily Reading – Reading for enjoyment together, even if it's just a few pages of favourite stories, and talking about the stories together.
2. Practice Math's Facts – Spending a few minutes each day on simple addition, subtraction, or times tables (depending on your darling's level) can make a big difference.
3. Celebrate Culture and Identity – Discuss your whānau traditions, language, and history, and help your child gather photos of special people for our class displays.
4. Swimming Gear – Make sure your child has swimwear and a towel on swimming days.
5. Duathlon Prep – Practice short runs or fun water activities together to boost confidence.

I truly value your partnership and look forward to an exciting year of growth and learning. If you have any questions, concerns, or just want to say kia ora, please feel free to get in touch.- and if you haven't already, please join skool loop 😊

**Ngā mihi maioha,**  
**Whaea Hayley**  
**Otari Classroom Teacher,**  
**Lake Rotoma School**



*Na to rourou, na taku rourou, ka ora ai tatou.*



# ATTENDANCE

Please continue to prioritise school attendance. Most of our Tamariki are doing exceptionally well, and we want to keep that momentum going.

## Ways to let us know your child is absent



ADD AN ABSENTEE ON THE **SKOOL LOOP** APP



CALL THE SCHOOL **07 3620 839**  
LEAVE A MESSAGE IF THERE IS NO ANSWER



EMAIL THE SCHOOL  
**office@lakerotoma.school.nz**



TEXT THE SCHOOL ADMIN **027 203 7270**

**THANK**  
**you**

*Nga Mihi to all our Tamariki, Whanau  
and wider community for your ongoing  
support towards our Kura.*