



Wednesday Newsletter

Care-Respect-Cooperate-Strive

Kaitiakitanga-Manaakitanga-Mahi Tahi-Takakawe

MT. BIGGS SCHOOL

707 Sandon Rd, RD9, Feilding

Phone 06 329 3646

office@mountbiggs.school.nz

1st May 2024 - Week 1 Term 2

Share and Care

Whole School : Term 2 TBA



Kia ora koutou e te whānau,

Welcome to Term 2!!! It is great to be back. We have some new faces at Mount Biggs School this term. A big friendly Mount Biggs welcome to all of our new children, their families and whānau. We are looking forward to you being a part of the Mount Biggs team. We will be holding a mihi whakatau for new children, families and whānau on Tuesday, May 7. We are in for another busy and exciting term with lots of activities and events happening throughout the term. We have our school cross country on Thursday, May 23. There will also be the Kainui Cluster events including cross country, rippa rugby and the Year 8 day out. Our Year 8s will also be attending the National Young Leaders Day in Palmerston North.

Mid year reports will be coming home this term, in Week 9 and conferences in Week 10. Last term we had a whole school share and care. It was great to have so many come to school and see what the work the children have been doing. We will repeat this again this term in Week 9. The feedback was very positive about having it on one day so families could see all of their children's work on the same day.

ANZAC Day

About 14 children and their families attend the dawn service with Mount Biggs School in the holidays. It was our first time attending as a school and it was a real privilege to be a part of this very significant day. Our children were fantastic ambassadors for our school and can be proud of their involvement. We would like to thank Andy and Nikki for donating a wreath for the school to place at the memorial in Feilding. Thank you to all of the parents and caregivers for bringing your children, we really appreciate your support.

School Upgrades

We had a lot happening in the school during the holiday break. As part of the Ngā Iti Kahurangi Programme we had new LED lighting, acoustic ceiling panels, and RCDs installed across the school. Although these are things that are easily overlooked they provide us with up to date buildings and enhance the classroom spaces for our children to learn in. There will be some other upgrades in the future. Programmed Maintenance were also onsite cleaning the outside of the school and touching up the paint work. We also had the Turf maintenance team in keeping our amazing turf in great condition for the children.

Teacher Only Days 2024

The Ministry of Education requires us to hold two teacher only days this year. These days are for schools to look at curriculum delivery, assessment within the school, and other areas of focus. They have given specific timeframes that these need to be

Wednesday Newsletter

held in. We have scheduled our first one for Friday, May 31. The next teacher only day will be in Term 4 and must fall between October 21 and November 21. We will confirm the date with you as soon as possible.

Skool Loop and School Docs

Just a reminder that we use the Skool Loop app as a communication tool for so many things. This is a great way to keep up to date with news, events and notices... You can download the app via the Apple App store or on your android device via the Google Play store

We are also a School Docs school. You can view the school policies and procedures via the School Docs website (link below). You can also give feedback on policies that are up for review. This happens every term.

<https://www.schooldocs.co.nz/>

User Name: mountbiggs

Password: empowering

Ngā mihi,
Kyle Harris

IMPORTANT NOTICES - PLEASE NOTE THE FOLLOWING

-

IN BRIEF

GUITAR LESSONS

Starts tomorrow. If you are interested please let Louise know.

CALENDAR DATES

Term 2 (29th April - 5th July)

April

29th - School starts

29th - Technology starts Years 7-8

May

2nd - EPIC & Guitar starts

3rd - Room 1 & 4 Supermarket Visit

14th BOT Meeting

15th - NYLD Year 8's

17th - Pink Shirt Day

18th - Hall Dance (Adults)

23rd - School Cross Country

31st - TEACHERS ONLY DAY

June

3rd -KINGS BIRTHDAY HOLIDAY

5th - Kainui Cross Country

18th BOT Meeting

26th - Kainui Rippa Rugby

28th - MATARIKI HOLIDAY

July

3rd -Kainui Year 8 Day

3rd - Interviews

5th- Last day Term 2

22nd - TERM 3 starts

Payments for school accounts & lunches

12 - 3143 - 0188518 - 00 Reference: Surname & Stationery etc.

Wednesday Newsletter



"Heat up the Hall" Dance Party

Saturday 18th May

Mt Biggs Hall * 7.30pm-late

DJ for the night 'Turn It Up Productions'

playing great 80's & 90's dance music (with maybe a little 70's)

EFTPOS/Cash Bar * Supper included in ticket

Tickets \$20 single or \$30 a couple

Tickets can be purchased from the School Office.

Payments to be made to the Hall Account 03-0626-0111992-000

Sorry no door sales. Adults only. Inquiries see Louise in Office

All profits go towards heat pumps for the hall

Wednesday Newsletter



THE EGG PROJECT

I am not sure if all families realise that this is an excellent and easy Home & School fundraising project, that takes little effort from school families.

BASICALLY order & pay for your weekly eggs online through the EGG PROJECT...they are delivered to school (usually you can pick up Wednesday afternoon or Thursday)

Prices are the same as supermarkets (but eggs are fresher)

OUR school GETS \$1 for every dozen sold.

Win Win Situation.

Take a look at the information below....

Term 2 Wednesday Lunches

Lunch will be either on a Wednesday or Tuesday this term, this to activities happening on Wednesdays.

Note the following lunch days...

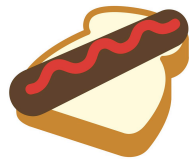
Wednesdays

1st May – 8th May – 22nd May – 29th May – 12th June – 19th June

Tuesdays

14th May – 4th June – 25th June – 2nd July

\$2 sausage



\$2 Baking



Wednesday Newsletter



Time to COLLECT Yummy stickers for our School's share of

\$200,000

SPORTS GEAR

Download extra sticker sheets at yummyfruit.co.nz



EAT YUMMY APPLES & BRING YOUR STICKERS TO SCHOOL!

It's Yummy Sticker time....

**Collect your yummy stickers from
apples and bring them into the office, so
we can get sports gear...**

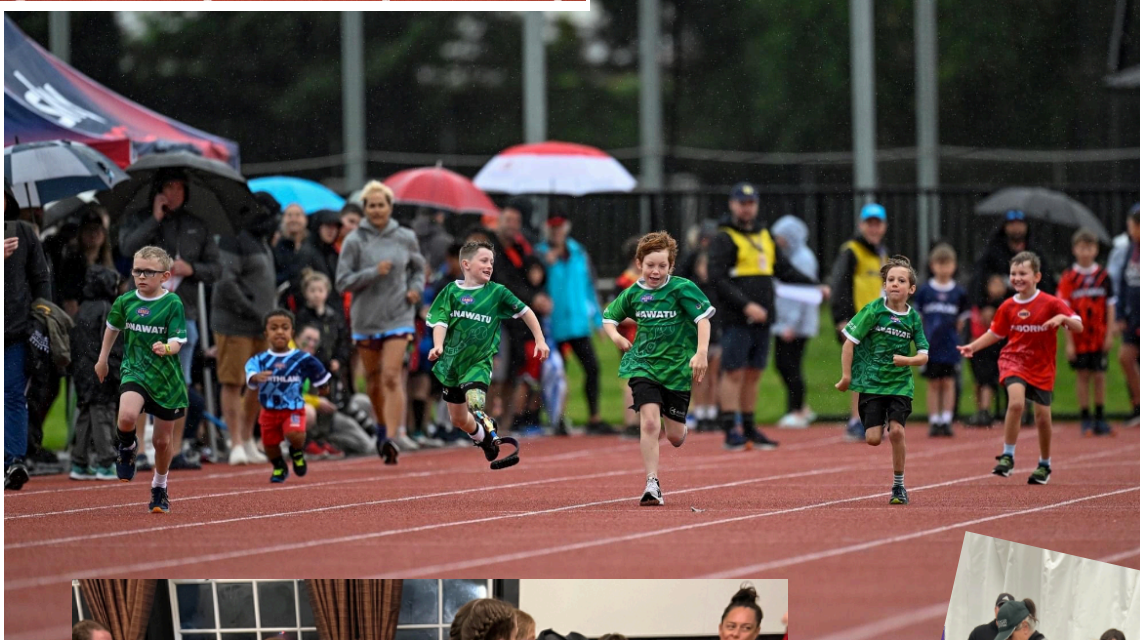
Thank you

Wednesday Newsletter

Shout Out to Our Amazing Kids

Harrison Atkins & Toby Keenan (way to go!!)

Harrison and Toby competed at the Halberg games in Auckland over the school holidays. They were part of a team from Manawatu and competed in swimming, athletics and got to try lots of other awesome sports.



Wednesday Newsletter

Home & School

What's coming for Term 2

Mother's Day Photo Shoot

Time to update those family photos and what a perfect gift for Mother's Day! Home and School collaboration with Sarah (Theo's mum) from Thread & Film happening in the hall **Saturday 4th May**. More info to follow on Skool Loop later this week.



Quiz Night

Book in the babysitter and sort your team, our famous Quiz & Auction Night is back!! Friday 21st June, 7pm in the Hall. Save the date – more info to come.



Our Committee

Chairperson: Nikki Houlahan

Secretary: Nick Webster

Treasurer: Fiona Thompson

Members: Dympna Tierney, Becky Rasmussen, Genna Kitching, Ailie Scott, Kallum Brown, Brad Nichols, Aimee Fargher, Graham Johnston, Narelle Webb and Kyle Harris.



Wednesday Newsletter



PURCHASE A PLAQUE FUNDRAISER!

Help us fundraise to create an amazing multi-purpose outdoor amphitheater by buying a custom-made engraved plaque! We will display your family or business name and logo proudly on our sponsorship wall for years to come.

Options:

- \$500 **Business – Displaying your business name and / or logo.**
(Up to 25 characters engraved on a kwila plaque 1200 x 140mm)
- \$200 **Individual / Family – Displaying individual or family names.**
(Up to 25 characters engraved on a kwila plaque 600 x 140mm)
- \$?? **Would you like to help pay for a plaque for another family that may not be able to contribute the full amount?**

PLEASE COMPLETE THE FORM ON THE BACK TO ORDER!



Wednesday Newsletter

PURCHASE A PLAQUE ORDER FORM

Name: _____

Email: _____

Phone: _____

PLAQUE OPTIONS (PLEASE TICK, IF PURCHASING MULTIPLE PLEASE USE A SEPARATE FORM FOR EACH)

☐

\$500 Business Plaque

☐

\$200 Family Plaque

☐

\$?? Donation to another family (you choose amount)

DETAILS (PLEASE WRITE CLEARLY!)

- Wording on Plaque: (max 25 characters) _____
- Would you like a logo as well? (business plaque only, please circle) YES NO
If yes, please email logo to: homeandschool@mountbiggs.school.nz
- Please pay into the Home and School account: **03-0626-0620703-00** and use "Plaque" as the reference.
- Please return this form to the school office or scan it to the above email.

THANK YOU FOR YOUR ONGOING SUPPORT!



Wednesday Newsletter



THE EGG PROJECT

MT BIGGS SCHOOL

Order your eggs on the website below (and use your code) before midnight Tuesday and they will be delivered super fresh to collect on Thursday from the school office.

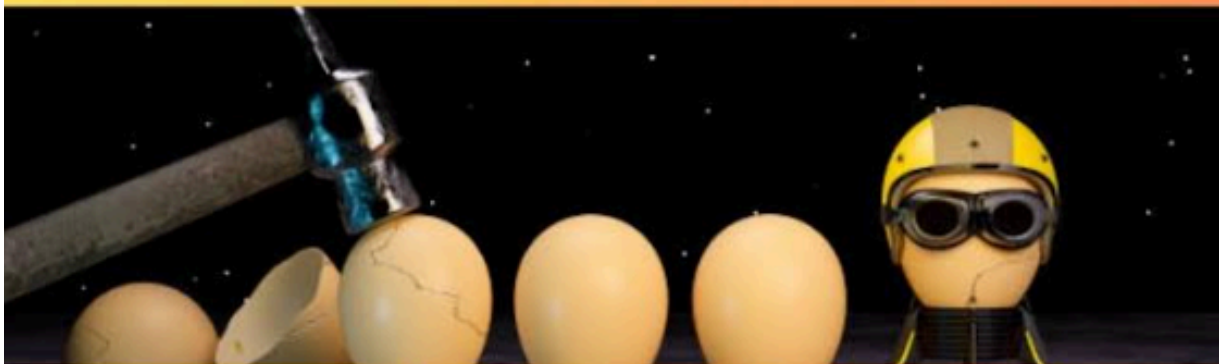
Free Range Dozen - \$9.50
Organic Dozen - \$11.50



We will give back \$1.00 per dozen to help fundraise as well!

YOUR CODE is SCH-007

SUPPORT LOCAL - EAT SUPER FRESH - SUPPORT COMMUNITY



www.theeggproject.co.nz

Wednesday Newsletter

Community Notices



This seasons Pine Firewood for Sale

Ring Raewyn 0274532119 (TeRakehou Road)
4 cube @ \$480

Free delivery in Feilding area



carpetcourt

JUNIOR TOUGH GUY AND GAL **CHALLENGE** EXTREME OFF ROAD RUNNING EVENT

WELLINGTON - May
PALMERSTON NORTH - May
HAWKES BAY - May
HAMILTON - June
TAURANGA - July
WEST AUCKLAND - August
ROTORUA - August
SOUTH AUCKLAND - September



www.eventpromotions.co.nz

Wednesday Newsletter

Wednesday Newsletter