



**Hīpoki ake te wairua i te tihi o Pūtahi.**

**Titiro whakararo ki Pārahirahi hei āhuru mōwai mō tātou katoa.**

**Whakarongo atu rā ki a Wairoro e katokato ana, e kotokoto ana. Whakawhiti mai ki Ōtuhi hei wāhi hākari mō te iwi.**

**Tēnā koutou katoa.**

Kei te whānau ataahua - tēnā koutou.

Tēnā koutou i runga i ngā āhuatanga o te wā. Ko te manako nui o te ngākau e tūperepere ana te ora i roto i a koutou katoa i tēnei wā!

I would like to take this opportunity to thank all whānau, parents, caregivers and mentors who have supported and encouraged our students who recently completed the Common Assessment Activities (CAAs) for literacy and/or numeracy, for the NCEA qualification. We had 85% of our Year 11s complete these as well as those Year 10 students who were ready to be assessed. It was awesome to see and hear how excited, if a little anxious, our ākonga were to complete these. Results will not be released until August and we look forward to positive outcomes for our ākonga.

As the temperature continues to drop I would like to take this opportunity to encourage everyone to ensure that your children have the uniform required to keep warm and fend off winter illnesses. A reminder that Whaea Mavis has a good stock of uniform items that students can access if they need to. Students should go to speak with Whaea Mavis when they arrive at school to collect any uniform items required. Our students look absolutely amazing when they present themselves well in our uniform - a testament to their whānau and tūpuna. Kia kaha tātou.

Sports Grants - apologies e te iwi - due to a technical error we require all students who have applied for these grants to complete the google document again (the link is in this newsletter).

Thank you all for your support over the past week with our decision to start locking our gates during school hours. This will become a part of our daily routine and tikanga at Northland College moving forward. Ideally we would not have to do this but the poor actions of a few interlopers who lack direction and purpose has brought us to this point.

E mihi ana ki a koutou e te whāmere.

Duane Allen  
Tumuaki



## Pink Shirt Day

Pink Shirt Day was on Friday the 17th of May. Our student leaders facilitated a rotation of activities where students learned a dance, created some positive posters and some positive chalk drawings as well as played some games in the gym. It was a fantastic day! A big mihi to our student leaders and to our kaiako who embraced pink and celebrated the day alongside our ākonga. We raised \$221 to go towards the kaupapa.





## Common Assessment Activities (CAA's)

After a pilot the CAA's are now in place. The CAA's are one of the ways students are able to gain their Numeracy and Literacy credits. Through the CAA's the students sit three digital exams. Numeracy, which gives 10 credits, Reading which gives 5 literacy credits and Writing which gives 5 literacy credits. Throughout the year our students get two opportunities to sit these, one in May and one in September. These exams are for all of our students who are yet to gain Numeracy and Literacy. The majority of our students in year 11 sat these, with a handful of year 12 students and some of our year 9 and 10 students. I'd like to thank our students for the time, and commitment they showed to turn up for these and for the effort they put in during these exams. The level of concentration was outstanding. The results of these will be released on August 5th.

Ngā mihi nui ki a koutou katoa! Tau kē!

### SchoolDocs Policies

To view our school policies and procedures please go to -  
<https://www.schooldocs.co.nz/> and enter  
Northland College in the search bar -

#### Welcome

Sign in to SchoolDocs

Username

 northlandcollege

Password

 kauri  Show

☒ Remember me on this computer

[Forgotten password?](#)

Sign In

### KAMAR Parent Portal

To view your student's attendance, details and reports please contact the school office to get your individual login details.

### Cell Phone Ban

Ngā mihi to our ākonga who have consistently supported our ban of mobile phones and acknowledged our shared responsibility for creating a learning environment that's just about that - learning - ko koutou ā runga!

### Uniform

Ngā mihi also to all of our ākonga who wear our school uniform with pride and mana!



## Mathematics Faculty

Listed below are the Standards offered this year for each senior class level.

### Mathematics and Statistics Matrix

Level 1	Level 2	Level 3
<b>US32406</b> Use mathematics and statistics to meet the numeracy demands of a range of situations <b>Internal-10 credits</b>	<b>AS91256</b> <b>2.1-</b> Apply co-ordinate geometry methods in solving problems <b>Internal-2 credits</b>	<b>AS91574</b> <b>3.2-</b> Apply linear programming methods in solving problems <b>Internal-3 credits</b>
<b>AS91944</b> <b>1.1-</b> Explore data using a statistical enquiry process <b>Internal-5 credits</b>	<b>AS91258</b> <b>2.3-</b> Apply sequences and series in solving problems <b>Internal-2 credits</b>	<b>AS91580</b> <b>3.8-</b> Investigate time series data <b>Internal-4 credits</b>
<b>AS91945</b> <b>1.2-</b> Explore mathematical problems that relate to life in Aotearoa New Zealand or the Pacific <b>Internal-5 credits</b>	<b>AS91259</b> <b>2.4-</b> Apply trigonometric relationships in solving problems <b>Internal-3 credits</b>	<b>AS91581</b> <b>3.9-</b> Investigate bivariate measurement data <b>Internal-4 credits</b>
<b>AS91946</b> <b>1.3-</b> Interpret and apply mathematical and statistical information in context <b>External-5 credits</b>	<b>AS91264</b> <b>2.9-</b> Use statistical methods to make an inference <b>Internal-4 credits</b>	<b>AS91582</b> <b>3.10-</b> Use statistical methods to make a formal inference <b>Internal-4 credits</b>
<b>AS91947</b> <b>1.4-</b> Demonstrate mathematical reasoning <b>External-5 credits</b>	<b>AS91269</b> <b>2.14-</b> Apply systems of equations in solving problems <b>Internal-2 credits</b>	<b>AS91587</b> <b>3.15-</b> Apply systems of simultaneous equations in solving problems <b>Internal-3 credits</b>



	<b>AS91265</b> <b>2.10</b> -Conduct an experiment to investigate a situation using statistical methods <b>Internal- 3 credits</b>	
--	---	--

Level 1 math students have just completed CAA testing of US32406 with our junior cohort.  
Level 1 math students are completing AS91944 - 1.1 Explore data using a statistical enquiry process.  
Level 2 math students have completed 2 Achievement Standards - [AS91264 & AS91256].  
Level 3 math students have completed 2 Achievement Standards - [AS91582 & AS91581]

**Our Junior school teaching programme will cover topics selected from the 3 strands:  
Number and Algebra, Geometry and Measurement, and Statistics.**

You are more than welcome to come into school and discuss any matters regarding our teaching programme and student progress. Please call our administration team and ask for an appointment with Matua Wiringi Timoko.

**Tēnā koutou katoa - from the Maths Faculty**





## KO TAE MAI TE MAKARIRI.. IT'S GETTING COLD

A few Uniform reminders:

- Pants need to be black or navy and cannot be jeans or trackpants
- School sweatshirts and jerseys are available to purchase from the warehouse
- Free navy jackets are available at Te Puna wai
- Hoodies are not allowed



TERM 2

# PIZZA FRIDAY



**One box + drink meal  
\$7.50**



**Pizza options:  
Hawaiian  
Pepperoni  
Cheese**

**Drink options  
Sprite  
Coke Zero Sugar  
Coke  
Fanta**

*Place your order at  
the front office.  
Cash and etfpos  
available*

*Pizza orders need to  
be in by the end of  
the day on Thursday  
Pick up your order at  
lunchtime*



To access the application form please right click on the image and click **Open link**

# New Zealand Carbon Farming

## Sports Grant

**SPONSORSHIP FOR  
NORTHLAND  
COLLEGE STUDENTS**



**SPONSORSHIP \$250  
WINTER CODES -**

- sports fees
- sports equipment
- support services
- travel to events

**APPLY HERE**



**New Zealand Carbon Farming**

in partnership with -

**The NZ Sports Collective**

(Rob Waddell)

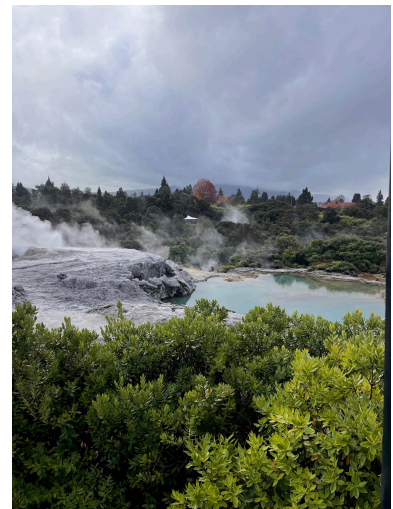
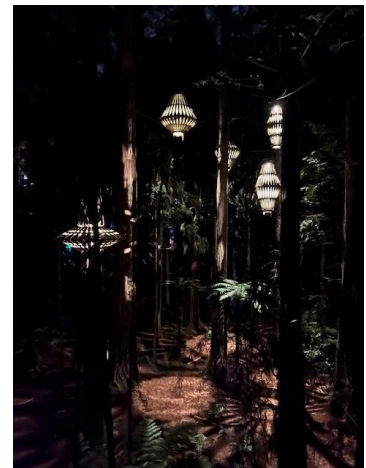




## Senior Geography Field Trip

In Week 3 of this Term our Senior Geography class went to Rotorua for their field trip. This was a part of their research assessment about Tourism Sustainability in Rotorua. We visited 6 different tourist locations, Te Puia, Velocity Valley, Polynesian Pools, the Zorb, the Skyline and the Redwoods Night Treewalk. At each location we conducted quality assessments and surveyed tourists. We were fortunate enough to be able to participate in each location as well. Te Puia was one highlight for us, as we were able to watch the Geyser erupt while we were there. Another highlight was Velocity Valley, where our ākonga and kaiako pushed themselves out of their comfort zone and rode the ride called "The Swoop" where you are pulled 40m up into the air and then let go to swing. It was a fantastic trip overall despite the rain, the students were able to collect the data that they needed to in order to complete their assessments. A big mihi to Matua Perry and Matua Kyle who accompanied us on our trip, and a big mihi to the kids for their enthusiasm, engagement and beautiful manners in all areas from the lead up, to the trip itself, through to their mahi once we returned. We hope to make this an annual event.

E mihi ana - Whaea Mitchel - Geography Teacher.





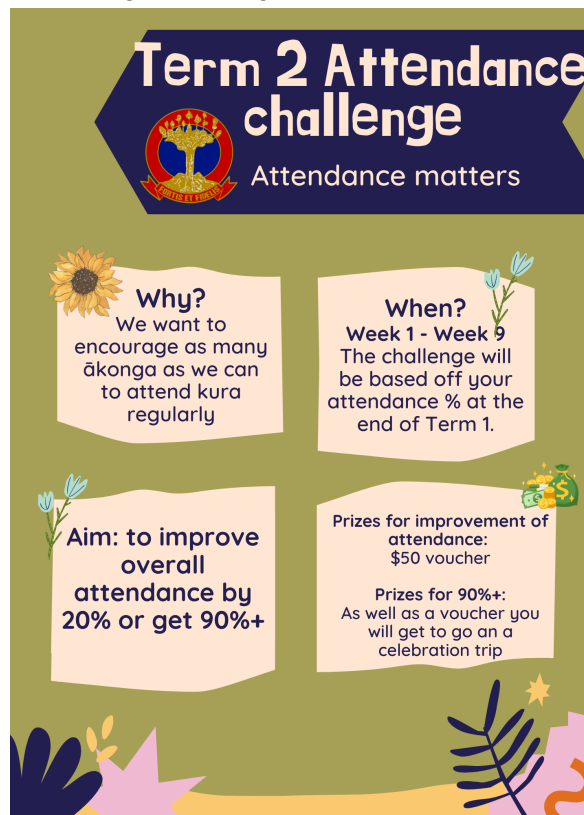
## PB4L at NC

### Attendance:

**Individual:** This term we are doing an array of different things to support attendance. Below are details of our individual attendance acknowledgement system. Students are given updates on their attendance during whānau time as a way of tracking where they are at.

**Whānau challenge:** We are also running a whānau class challenge, where the whānau class with the highest attendance from each whānau for the term will get a lunch shout in the last week of the term.

Please encourage our rangatahi to attend school regularly.



### Caught doing well cards:

Our CDW cards are our way of acknowledging students kaiako notice are displaying our school values during class, at lunchtimes and out and about. These can be given out by kaiako, support staff, and external providers. When the student is given a CDW card they bring it over to the box in reception.

Each Friday at assembly 8 cards are pulled out of the box, the ākonga come up and collect a small prize. Their card then goes into a bigger draw for our end of term Caught Doing Well Wheel of Fortune where we have bigger and better prizes!