



Pūtahi maunga, tū te ao, tū te pō.

Tēnā koe e tū mai nā hei herenga tāngata, hei herenga kaupapa, hei herenga kōrero.

Whakawhiti mai nei ki Pārahirahi e tū ana hei āhuru mōwai mō tātou katoa. Whakarongo atu rā ki a Wairoro e rere mai nei. Whakawhiti mai ki Ōtuhi hei wāhi hākari mō te iwi.

Tēnā koutou katoa.

Firstly, I would like to acknowledge all of our students who sat the Common Assessment Activities (CAAs) over the past two weeks. These are a crucial part of NCEA that assess student literacy and numeracy.

In terms of extra-curricular activities I also want to acknowledge our rugby girls who have had an outstanding start to their season and all students who are practising for Te Rōpū Ara Whānui as they prepare for the regional kapa haka competition early next term. These are examples of amazing kaupapa that contribute to the culture and fabric of Northland College, and they develop key skills in students that are transferable to learning and life.

Next week will see our Assistant Principal, Mitchel Woodman, go on maternity leave. Whaea Ariana Dalton will step up into this role for the next 12 months. We wish Whaea Mitchel and her whānau all the best and welcome Ariana to our leadership team where we are sure she will make her mark.

Over the past four weeks we have had several instances of students using cellphones to record events and incidents at school, and posting them to social media sites. Firstly, cellphones at school are banned under the Education and Training Act, 2020 - this reinforced a decision to ban cellphones made by the Northland College Board in 2022. Secondly, the inability of a minority of students to refrain from recording incidents and posting to social media causes stress, angst and discomfort for the students involved. This morning I informed students that from next Tuesday any cellphones that are confiscated by staff will need to be collected by a caregiver - they will not be automatically returned to students at the end of the day. Students who refuse to hand in their cellphones will be subject to our disciplinary process.

Please do not hesitate to contact me at school if you have any questions or concerns.

Duane Allen

Tumuaki



From Packed Provinces to Peaceful Plateaus: NCEA Conquered!

The Senior Asian Studies class has successfully completed another NCEA assessment, this time focusing on the spatial distribution of populations in China. It was truly impressive to see the depth of understanding demonstrated in their work, highlighting the various factors influencing where people live across such a vast and diverse country. The insights they presented were thoughtful and well-supported. Even President Xi Jinping would approve!

By Matua Kyle Sutton

Historical Reasons For The Spatial Distribution Of China's Population

A greater part of China resides in the southern and eastern areas of the country. This continuous pattern was initially created in ancient times due to natural and anthropogenic factors. It all began during the Neolithic Period, when the early Chinese civilizations commenced their innovations in the Huang He, the Yellow River, and the Yangtze River basins. Both of these rivers offered an excellent supply of water, soil fertility, opportunities for trade, a temperate climate, and a natural barrier. These factors attracted the Chinese civilization to begin development, as it was a perfect area. Another historical reason causing the uneven distribution of China's population is the creation of trading centers. The geographic factors that were noted before influenced Chinese civilizations to create trading hubs. The trades consisted of valuable goods such as traditional Chinese teas, the finest silk, gunpowder, and porcelain pottery. India, Central Asia, and the Middle East were the main regions trading with China. The trades were successful as both of them benefited from luxury goods. The rapid rise of trade contributes to China's uneven spread of population, because it has a strong pull factor for the urban regions. These are the primary historical reasons that shape the spatial distribution of China's population, making it highly uneven.



Above: Fertile River Valleys (Yangtze River)



(Yellow River)



Above: Trade Center In Shanghai

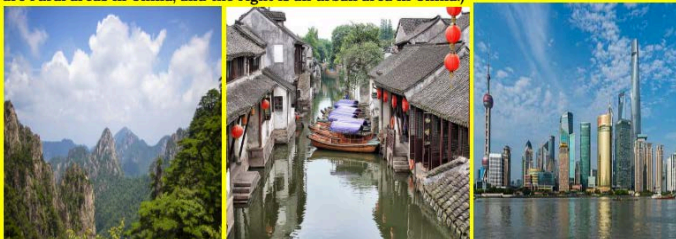


Above: China World Trade Center In Beijing



Why are they there?

Most of Western China is arid. It has large regions like the Taklamakan Desert, which is largely uninhabited and inhospitable due to the hot summers and long, cold winters. Many push and pull factors attract and make people in rural areas migrate to Urban areas in China. Push factors that push people living in rural areas are, firstly, although it has been reduced immensely in China over the past decade, it remains a large problem in rural China, due to low salaries and high unemployment. Most Chinese are leaving the rural areas of China to live in urban areas. Poor education for children, Lack of medical care for children and elderly people, and lastly, there are more opportunities in urban areas compared to the rural regions of China regarding employment, education, and medical facilities. (The two pictures shown on the left are rural areas in China, and the right is an urban area in China.)



Pull and Positive factors: There are more job opportunities, Rich alluvial soils and moderate temperatures create excellent farmland that provides enormous

PUSH & PULL FACTORS

Some pull factors that encourage people to move to the big eastern cities are things such as higher paid jobs, better healthcare, and better living areas. At the same time, with a better climate and fresh water that attracts more people, big cities like Beijing and Shanghai have higher paying jobs. In contrast, other big cities in the eastern side have better healthcare. As China's economy has expanded, wages have also increased, making urban areas more attractive to people seeking higher incomes. While natural disasters can occur anywhere, urban areas are often perceived as being less vulnerable to the impacts of such events compared to rural areas, some push factors about China though since it is such a densely populated area that means it is overcrowded and most likely has a lot of traffic jams and less job opportunities if there not taken already.





Chromebook Creations: Year 9's Guide to Northland's Best!

Our Year 9 Social Studies students recently completed their first Chromebook-based project, creating vibrant tourist brochures showcasing the beauty of Northland, NZ. Students researched stunning local sites using their Chromebooks and then utilized their excellent design skills and software like Canva to produce visually captivating and informative brochures. This project not only deepened their understanding of Northland's attractions but also developed valuable digital research, design, and communication skills. Congratulations to all Year 9 students on their impressive work!

By Matua Kyle Sutton



Contact Us

☎ [09 430 4200](tel:094304200)

🌐 [WHANGAREI FALLS](http://www.whangareifalls.co.nz)

🏠 6 Ngunguru Road,
Tikipunga, Whangarei 0112

Experience

Whangarei Falls in New Zealand offer a natural wonder experience, including a short, accessible walk to view the falls from above or down to the base. The 26-meter waterfall cascades over basalt cliffs, creating a picturesque scene surrounded by native bush. Visitors can enjoy a picnic, bush walk, and potentially even a summer swim in the deep pool below.

Welcome to Northland



Northland has wonderful scenery and has fun places to
We welcome newcomers to Northland and hope you have a
great time



Te rau aroha museum.



Te whare runanga.



Te kongahu museum.



Carving studio.



Traditional waka.



The new exhibition in the treaty house.

The places to visit:

THINGS TO DO In Northland

Before going to Northland, I'd recommend getting to know it. There are plenty of history in Northland. There are also plenty of places to learn about.

Waitangi

Waitangi has its big part in history, it was where the old Maori chiefs signed the treaty. You can hear and see more of its history at the Waitangi treaty grounds, an entire slot of land that stories and history on New Zealand. It has museums, an old house to explore and much more.

Whangarei

Whangarei is the only city in the whole of Northland. You can find multiple things to do there including: a Trampoline park, Arcade, many restaurants, and many others. There are amazing glowworm caves that you can visit and the Whangarei falls are breathtaking, definitely put that on your list when you go.



Opononi

Opononi is a great town by the seaside, with lots of activities. Try visiting a sacred tree, Tane Mahuta, you can find him in a nearby forest, he is called a god and has a couple stories about him. Go swimming in the sea, the sea also has history in it. There was a dolphin who swam in the waters, there is now a statue to commemorate him.

Northland as a whole

Northland is definitely a place, it has many activities and places to visit, put it on your bucket list if any of the previous places have interested you. Northland has a lot of history for you to learn about, so enjoy the different stories about this amazing place.

Come Now

Book a tour today! Call us at +123-456-7890 Monday through Saturday, 9 a.m. to 5 p.m., or email us at hello@reallygreatsite.com.





<https://vimeo.com/1080334392>

Understand your child's learning

Information and resources for parents, caregivers and whānau

A new webspace on education.govt.nz houses practical videos, activities and resources for supporting learning that are easy to understand, empowering you to take an active role in your child's education.

An introductory video that walks you through the content is available [here](#).

With the launch of the 'parent-friendly' versions of both our national curricula, you will know exactly what your child is learning, why it's important, and when they'll be learning it, so that you can actively support and complement your child's learning at home and have meaningful conversations with your child's teacher or kaiako.

To navigate the website, you can choose which curriculum you want to learn more about and then go to your child's year level.

To te mātua/donga tōdoko i te kōwhiri kōwhiri kōwhiri
How the New Zealand Curriculum and Te Marautanga o Aotearoa support your child

The New Zealand Curriculum and Te Marautanga o Aotearoa are designed to support your child's learning and development. They provide a framework for what your child should learn and when they should learn it.

The New Zealand Curriculum is for all English-medium schools and only incorporated schools in their English and for the Māori-medium curriculum in their Māori-medium learning.

In this section, find out about how the New Zealand Curriculum and Te Marautanga o Aotearoa support your child's learning and development at school.

How the curriculum supports your child's learning

By the end of Year 3

Knowing what your child is learning will help you support and guide them in their learning, reading, writing and maths every day.

English in Year 3

English is a key subject in the New Zealand Curriculum and Te Marautanga o Aotearoa. It is a subject that is taught in all schools and is a subject that is taught in all schools.

Maths and statistics in Year 3

Maths and statistics are key subjects in the New Zealand Curriculum and Te Marautanga o Aotearoa. They are subjects that are taught in all schools and are subjects that are taught in all schools.

Reading books at home in Year 3

Reading books at home is a key activity in the New Zealand Curriculum and Te Marautanga o Aotearoa. It is an activity that is encouraged in all schools and is an activity that is encouraged in all schools.

www.education.govt.nz

1 OF 2



Senior Social Sciences Update

Our first semester Senior Social Science subject classes are close to completion. Students in the Level 2 and 3 NCEA History class and the Level 1 NCEA Asian Studies class have four more weeks to complete their internal assessments in those subjects. Different courses will be offered in the second semester in the senior Social Sciences.

Mr Peters
Head of Social Sciences

Senior Mathematics

Level 3 Mathematics & Statistics

All students have successfully gained 6 Level 3 credits to date, having completed two internal Achievement Standard assessments. They are now working on their coursework for the next unit: *Investigate Bivariate Measurement Data [4 credits]*. Throughout this process, students have demonstrated determination, active listening skills, a willingness to complete tasks, strong collaboration skills, a respectful attitude, and a willingness to ask relevant questions, setting a positive tone for their continued learning. This will contribute to their success as they deepen their understanding of this topic.

Level 2 Mathematics & Statistics

Most students have successfully gained 4 Level 2 credits to date, having completed two internal Achievement Standard assessments. They are now working on their coursework for the next unit: *Apply trigonometric relationships in solving problems [3 credits]*. With regular attendance, a willingness to learn, and a positive attitude, higher gains are possible.

Level 1 Mathematics & Statistics

We have just completed the first round of testing the US 32406- Use mathematics and statistics to meet the numeracy demands of a range of situations.

CAA-Common assessment activity
Online / web-based [10 credits]

A second round of testing will take place in term 3. Two internal Achievement Standards will also be assessed this term [10 credits]



Junior Mathematics

Junior students will complete a comprehensive course of study covering the Algebra & Number Strand, Measurement & Geometry Strand, and Statistics/Probability Strand. A select cohort of students had the opportunity to sit the CAA-Common Assessment Activity—online/web-based [10 credits]

Senior English

English Department Update: Exploring the Theme of Racism in Year 12 & 13

This term, our Year 12 and 13 English students have been engaging with powerful texts that explore the theme of **racism**—past and present. Through texts, students are developing a deeper understanding of how prejudice, inequality, and injustice have shaped societies and continue to impact communities today.



Texts such as Kathryn Stockett's *The Help* and Robert E. Bartholomew's *No Māori Allowed*. These works offer compelling perspectives on systemic racism—set in the American South during the 1960s and small-town Aotearoa in the 1950s.

English Department Update: Researching NZ hot topics in Year 11



Students are currently completing their second internal assessment in this course. They are researching their topics for a persuasive essay. Some of the issues that are banning the use of social media for 16-year-olds, looking after our marine life, racism between Māori & Pakeha, New Zealand gun laws, & teenage drinking and driving. Students are listening to podcasts and watching videos, as well as reading online news to access information and make judgments about what they have learnt.



Junior English Classes Dive into New Adventures!

This term, our Junior English classes are embarking on exciting literary journeys with two captivating novels!

Year 9 students will be exploring Louis Sachar's award-winning novel, *Holes*. This darkly humorous and poignant story follows Stanley Yelnats to Camp Green Lake, a juvenile detention facility where the boys are forced to dig holes all day. As they uncover secrets buried beneath the dry lakebed, Stanley unearths his family's curse and discovers the truth about his past. *Holes* offers a fantastic opportunity to discuss themes of fate, friendship, justice, and the impact of history.

Meanwhile, our **Year 10** students will be immersed in the powerful world of *Kura Toa Warrior School* by New Zealand author Tim Tipene. This compelling novel invites students to consider themes of identity, culture, and resilience through the eyes of a young protagonist navigating challenges and discovering his inner strength. *Kura Toa Warrior School* provides a wonderful platform for engaging discussions about local literature and its relevance to our students' lives.

We're looking forward to a term filled with rich discussions, critical thinking, and a deeper appreciation for the power of storytelling!



English Department





NSSSA Turbo Touch Champions!

Congratulations to our senior girls Turbo Touch team for taking **1st place** at the Northland Secondary School Turbo Touch Championships scoring in the last seconds of a thrilling final against Whangarei Girls High School.

Our senior boys and junior boys also competed in their respective grades. A big thanks goes out to Matua Joel Quitta-Moses for his continued support of our school sports teams!





Weaving Wonders: Malaysian Artistry Comes Alive!

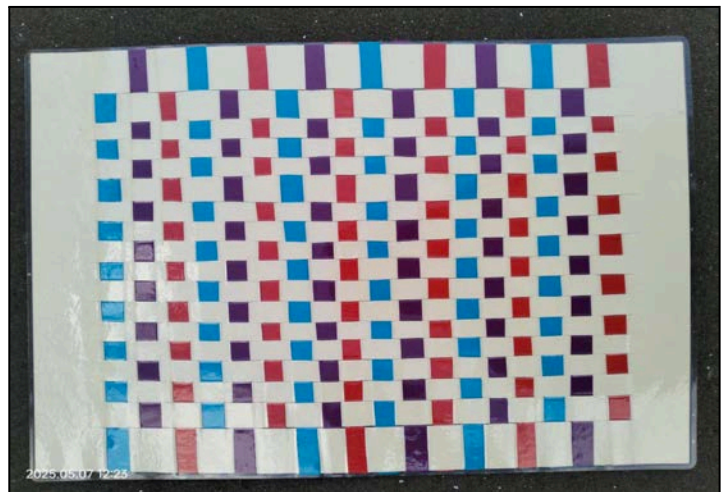
Inspired by Malaysian weaving, our students tried their hand at a simpler version using art supplies! No fancy looms needed – just strips of colored paper!

They learned the basic "over and under" technique, just like real weavers. It was awesome to see them creating their own patterns and colours. This wasn't just fun art; it helped them:

- Improve their hands: Tricky movements helped their hand-eye coordination.
- Understand design: They learned about repeating patterns and colors.
- Appreciate other cultures: They got a taste of a traditional Malaysian art form.

This lesson showed all of us how old traditions can still inspire new art.

By Whaea Suvina K-Sutton





Hockey

It's been a rewarding start to the hockey season! Our players have been training hard and showing great determination on the field. Despite some tough weather conditions, they continue to give it their all each game. We're proud of their effort and resilience, and look forward to what the rest of the season holds!

A big mihi to ReSport for their donation of hockey gear to our rangatahi. This support means a lot to us and breaks down any barriers that are preventing our rangatahi from getting out on the turf!





Pink Shirt Day 2025

Another awesome year of supporting the Pink Shirt Day kaupapa. Our prefects led rotations from kanikani to chalk drawings. It was great to see our kids get involved, dress up in Pink and be a part of the kaupapa. We raised \$153.00.

A mihi to our best-dressed students. Runners up: Terrah-Kaine Kopara and Gurnoor Kaur and our winners Kiwa Tulua-Rameka and Tayten Gray-Nikora.





SchoolDocs Policies

To view our school policies and procedures please go to -

<https://www.schooldocs.co.nz/> and enter Northland College in the search bar -

Welcome

Sign in to SchoolDocs

Username

 northlandcollege

Password

 kauri  Show

☒ Remember me on this computer

[Forgotten password?](#)

Sign In

School Start Time

8.45am

Cell Phone Ban

Ngā mihi to our ākonga who have consistently supported our ban of mobile phones and acknowledged our shared responsibility for creating a learning environment that's just about that - learning - ko koutou a runga!

KAMAR Parent Portal

To view your student's attendance, details and reports please contact the school office to get your individual login details.

Uniform

Ngā mihi also to all of our ākonga who wear our school uniform with pride and mana!