



# ALLENTON SCHOOL NEWSLETTER

**Term 2 Week 2 - 9 May 2025**

**110 Harrison Street, Ashburton**

**Phone (03) 308 6495**

**Email: [office@allenton.school.nz](mailto:office@allenton.school.nz)**

**Website: [www.allenton.school.nz](http://www.allenton.school.nz)**

**School app: Hero and select Allenton School**

***Together We Learn and Grow***

***Me akotahi hei oranga mā te katoa***

## **Principal's Comment Nga Korero o te Tumuaki**



*Ka nui te mihi ki a koutou - greetings to you all*

Welcome to the start of Term 2 everyone, albeit two weeks into the term. It was wonderful to see everyone back at school on the first day of term and I hope families have had an enjoyable break.

Tomorrow there are two events that parents may wish to join us for. In the morning we have our school cross country at Argyle Park, starting at 10am on the western side of the park toilet block. Please refer to the Hero post made on 29 April for further information. We will be having our termly mihi whakatau next Tuesday afternoon at 2:15pm to welcome new students and their families to Allenton. Existing parents are most

welcome to attend as well. Details were shared on Hero on 6 May and new families received additional information as well.

We have appointed a teacher for the next New Entrant class (Rm 17), which will start early in Term 3. Anna Brosnahan has been appointed to this position. Anna is currently teaching in London and prior to this had time teaching in Invercargill. We look forward to welcoming her to Allenton School early next term.

Many of you will be aware of the new Parent Portal launched by the Minister of Education over this past weekend. Parents, caregivers, and whānau play an important role in supporting their child's learning and development. The portal is an online resource that will help whānau to support their child's learning. The announcement on Sunday was also the first time that principals and teachers were made aware of the portal. Staff will take time to look over the portal in the coming weeks. The link to access this is:

<https://www.education.govt.nz/parents-and-caregivers/schools-year-0-13/parent-portal>

In the past we have been able to provide funded counselling support with Anna Arrowsmith. Due to high workload, Anna won't be able to provide this in-school support this year, but will be able to see children in her private practice. If parents wish to enquire about this support for their children, please contact Anna directly - [annaarrowsmith@hotmail.com](mailto:annaarrowsmith@hotmail.com).

We have previously noted days when school will be closed for instruction this term, namely Monday 2 June (King's Birthday), Tuesday 3 June (staff development) and Friday 20 June (Matariki).

*Kia kaha, kia toa, kia manawanui*  
Be strong, be brave, be steadfast

Until next time,

Andrew Leverton  
Principal | Tumuaki

## New students

We extend a warm welcome to the following children who have started at Allenton School recently. We look forward to getting to know you and wish you an awesome time at our school!

**Kathryn to update**

## PTA update

**Save the Date...** The PTA are holding a quiz night on Saturday 16 August in the school hall to raise money for items for an accessible playground. Get a team of up to six together for a great night out! This event will be restricted to people over the age of 18 years. More information about this will be shared soon on Facebook, Hero and our next school newsletter.

The PTA are looking for donations of prizes for raffles and auctions for the quiz night. Please email [pta@allenton.school.nz](mailto:pta@allenton.school.nz) if you are able to assist with this.

Congratulations to the following office holders who were elected recently for 2025 / 2026:

Chairperson	Kerina South
Secretary	Mel Horrell
Treasurer	Dan Sanson

Many thanks to our past office holders for the work they have done on the PTA - Barb O'Connor (Chairperson) and Wendy Black (Treasurer). Both will continue on the wider committee. Adi Avnit and Olivia Raukete who have recently stepped down from the committee and we thank them for their involvement on the PTA.

## Calendar of school events - Term 2, 2025

Tuesday 13 May	School Cross Country, Argyle Park from 10am (pp 15 May) Mihi Whakatau, 2:15pm
Wednesday 14 May	Young Leaders Day, Christchurch
Friday 16 May	Junior Area assembly, 10:50am
Monday 19 May	School Board meeting, 7pm
Friday 23 May	County Cross Country (pp 26 May) School Assembly, 10:50am
Monday 26 May	Massed Choir practice
Wednesday 28 May	Welcome Wednesday New Entrant information morning, 9:15am Pasifika fono, 5pm
Friday 30 May	Senior Area assembly, 9:10am Middle Area assembly, 10:50am
Monday 2 June	Samoan Language Week commences School closed - King's Birthday
Tuesday 3 June	School closed - Staff Development Day PTA meeting, 7:30pm
Tuesday 10 June - Thursday 12 June	Mid Canterbury Music Festival (Allenton evening tbc)
Friday 13 June	Junior Area assembly, 10:50am
Monday 16 June	Rooms 15 and 16 swim week (2 weeks)
Friday 20 June	School closed - Matariki
Monday 23 June	School Board meeting, 7am
Wednesday 25 June	School assembly, 10:50am
Thursday 26 June	Hakatere Festival, Ashburton Events Centre
Friday 27 June	Term 2 ends, 3:00pm

## 2025 Term Dates

Term	Dates	School closed
2	Mon 28 April to Fri 27 June	King's Birthday (2 June) Staff development (3 June) Matariki (20 June)
3	Mon 14 July to Fri 19 Sept	
4	Mon 6 Oct to Wed 17 Dec	Labour Day (27 Oct) Staff development (13 Nov) Canterbury Anniversary Day (14 Nov)



**Allenton School**

Together we learn and grow

*Me akotahi hei oranga mō te katoa*



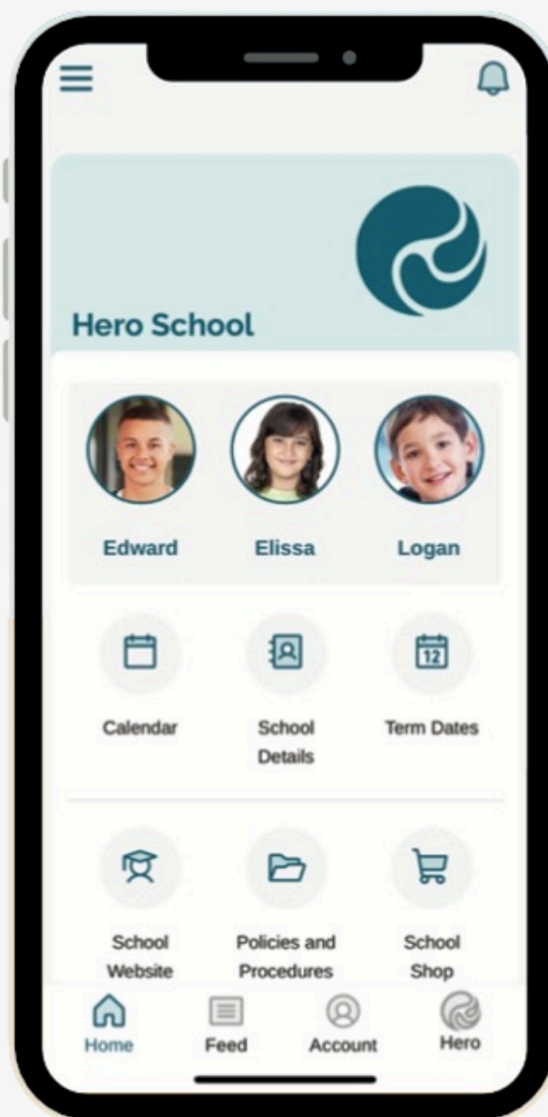
## HERO - OUR SCHOOL APP!

Hero is our "one stop shop" for communication with family and whānau. It has quick links to our school website, policies and social media.

Like our previous app, you can report an absence and receive newsletters, book your School Interviews, and receive other important messages from Allenton School.

Our Community Calendar will be fully integrated in 2025, and Hero continuously develops new features for us.

Let your child's teacher know if you would like some help getting set up on Hero, or come and see us in the school office.



Download on the  
**App Store**



GET IT ON  
**Google Play**



# **ASHBURTON COLLEGIATE SQUASH CLUB**

## **JUNIOR CLUB COACHING**

**WEDNESDAY AFTERNOONS - TERM 2**

**AGES 5-8: 4.00 PM - 4:45 PM**

**AGES 9-11: 4:45 PM - 5:30 PM**

**AGES 12 AND UP: 5:30 PM - 6:30 PM**

**(NOTE: SKILL LEVELS MAY SHUFFLE THE GROUPS FOR MAXIMUM FUN!)**

Our coach, George, brings a wealth of experience in coaching junior athletes at all levels, both in Wales and Australia.

All necessary equipment will be provided.

1 Chalmers Avenue, Ashburton  
\$50 per child per term



**TO REGISTER TEXT  
KELLY ON 027 469 7609**





**16<sup>TH</sup> – 24<sup>TH</sup> MAY 2025**  
**ASHBURTON EVENT CENTRE**

**A MUSICAL BASED ON THE STORIES OF P.L. TRAVERS  
AND THE WALT DISNEY FILM**

**ORIGINAL MUSIC AND LYRICS BY  
RICHARD M. SHERMAN AND ROBERT B. SHERMAN**

**BOOK BY  
JULIAN FELLOWES**

**NEW SONGS AND ADDITIONAL MUSIC AND LYRICS BY  
GEORGE STILES AND ANTHONY DREWE**

**CO-CREATED BY  
CAMERON MACKINTOSH**

**LICENSED EXCLUSIVELY BY MUSIC THEATRE INTERNATIONAL (AUSTRALASIA).**

# Tangata Atumotu Immunisation Drive



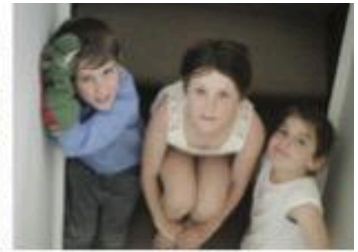
Date: 30th May, 2025

Time: 12pm - 5pm

Venue: 239 Racecourse Road, 7700,  
Ashburton.







# Tuning in to Kids™

## DATE, TIME & LOCATION\*

**Tuesday 13 May - 17 June**

**10 am - 12 pm**

**Presbyterian Support  
215 Tancred Street, Ashburton**

## REGISTRATION

**Please refer through  
[www.psuffersouth.org.nz](http://www.psuffersouth.org.nz) or email  
[midcant@psusi.org.nz](mailto:midcant@psusi.org.nz) to enrol.**

*\* Spaces are limited, however, you can request to be placed on the waitlist.*

## COURSE DETAILS

**Tuning in to Kids™ is an evidence based programme designed to teach parents & caregivers:**

- » Awareness and regulation of their own emotions
- » Awareness of their children's emotions
- » To use their children's emotional experiences as an opportunity for closeness and teaching
- » Skills to assist children with problem solving, and labelling and managing their emotions
- » To guide children's behaviours with appropriate limits

**NB: Changes can occur depending on registration numbers.**

## Sessions include:

- » Group discussions and exercises
- » Participants sharing their own experiences
- » Practices of new learning
- » Watching video material
- » Home activities to practice responding to children's emotions



# Free Support

## Group Programmes



Presbyterian  
Support  
Upper South Island

### Tuning in to Teens

Thursday 15 May - 19 June

9.30 am - 11.30 am

This programme will provide you with a greater understanding of your teen's developmental needs and emotional experiences. Using an emotion coaching framework, you will learn to respond to your teen in a supportive, empathetic and connected way.

### Parenting Through Separation

Thursday 5 June

9 am - 1 pm

The Parenting Through Separation programme provides you with practical advice to help you and your Tamariki cope. You'll learn tips on how to better communicate with the other parent and how to plan for your Tamariki once you are legally separated.

### Tuning in to Kids

Tuesday 13 May - 17 June

10 am - 12 pm

Tuning in to kids is a programme that provides participants guidance to help you teach your child emotional intelligence skills. It offers practical ways to support your child's emotional development.

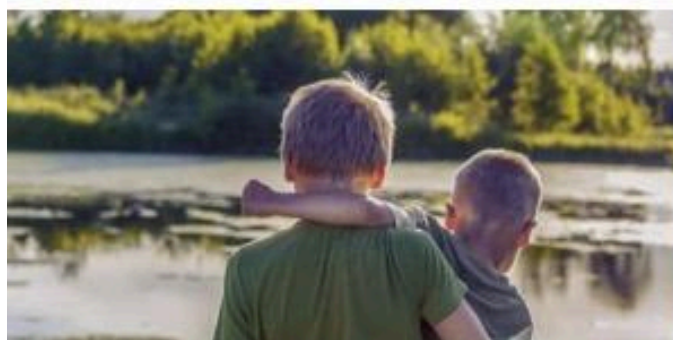


### Seasons for Growth

Wednesday 30 April - 18 June

3.30 pm - 4.30 pm

- Change and loss are part of life and grief is a normal response to these losses.
- For young people aged 6-12 years
- Uses imagery of the seasons to illustrate the experience of grief
- Helps young people deal with death, separation and divorce.



### To Join:

Online: Referral Forms

[psuppersouth.org.nz](https://psuppersouth.org.nz)

Email: [midcant@psusi.org.nz](mailto:midcant@psusi.org.nz) or

Phone: 03 261 6907