



Whānau Pānui

Friday 08 March 2024

Greetings, Tēnā Koutou E Hoa Mā, Talofa Lava, Malo E Lelei,
Fakalofa Lahi Atu, Bula Vinaka



***Happy birthday to all of our tamariki who celebrated their birthdays in
February!***

Rm 1 Ryka-Edge
Rm 2 Kai, Ta'alo, Sloane
Rm 3 Te Pori, SJ
Rm 4 Aydin, Paige, William
Rm 5 Leilani, Piper, Lyla, Phoenix
Rm 6 Iris, Millie
Rm 7 Joseph, Sofia
Rm 8 Lachie, Beau, Atelaite
Rm 10 Lily
Rm 11 Angel, Sally
Rm 12 Phoebe, Rosie, Roman
Rm 14 Sienna, Ayla, Charlie, Garlett
Rm 15 Luna, MacKenzie, Kynzleigh
Rm 16 Milo
Rm 20 Nivaan

Athletics Day

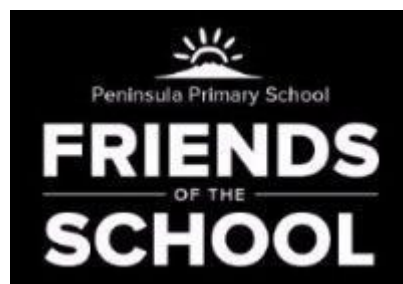
Last Friday several of our Student Leaders ran the annual Pre-school & Year 1/2 athletics event. They were in charge of setting up the equipment, running their station, teaching the game & skills and motivating everyone to give it their best. We were very impressed with their ability to think on their feet, to adapt the games for younger children and the kindness that they showed to our visiting preschoolers.





SPINNAKER STRAND

On Wednesday the Year 1's went on an adventure to see the kuaka at Spinnaker Strand, the birds our year is named after. After a walk that wasn't as long as we thought it might be, we arrived at the mudflats and got to explore. We found crabs, worms and shrimps in a variety of sizes and enjoyed hunting for them amongst the mud and rocks. Thank you to all the family members who came along on our Ngā Kuaka adventure.



We had a great FOS meeting last week and have agreed that due to the continuing increased cost of fruit we will no longer ask whanau to donate fruit for those Tamariki who need a top up in their lunchbox. There will be an option

to donate money directly through Kindo if you still wish to support this initiative on a regular basis and the money raised from our first pizza lunch each term will now go to purchasing the fruit required for the term.

We will continue to ask whanau to volunteer to make 5 lunches per day we require. We still have a few gaps for this term so if you can help please add your name to the spreadsheet on a day you can help and drop your 5 lunches plus piece of fruit into the office on that day.

<https://docs.google.com/spreadsheets/d/1DTaUqRK84vgYob1fu4XdhfuIGQVnkHse/edit?usp=sharing&oid=113546079889521725851&rtpof=true&sd=true>

As you will have seen our junior playground is now complete and it looks fantastic! The next part of our play based project is to install a Gaga pit for the middle/senior school. There was one at the Year 5/6 camp last year and it was a huge hit with the kids, and enables the ability for multiple kids to play and be included in the game at once.

Please see below picture.

What is a Gaga Pit? Gaga ball is a variant of the classic playground sport dodgeball. But instead of running around throwing balls that can smack kids in the face, head, and other sensitive body parts, gaga ball limits the impact. Players slap or hit the ball, aiming to hit other players at or below the knees. If you're hit, you're out. The last player in the pit is the winner. The game is relatively inclusive, since kids don't need to be able to run fast, and smaller kids may even have an advantage over taller ones.



ICE BLOCK ≈ GAGA PIT FUNDRAISER



\$2

14 MARCH 21 MARCH
28 MARCH 11 APRIL



LAST 4 THURSDAYS OF TERM 1

Orders must be placed by 6pm each
Wednesday via kindo. 13/3, 20/3, 27/3 & 10/4

Thank you for your support.
Need help with Kindo? Our Kindo help desk is open 8am-4pm weekdays.
Freephone 0508 454 636 or email hello@mykindo.co.nz

Kids, Consent & Safety: A parent workshop
Thursday 14th March 7.15-8.15 in Room 7 here
at school

Jo Robertson will be running a workshop for parents in light of the police "Keeping Ourselves Safe" programme that our students are currently taking part in. This workshop will complement what the children are discussing in their sessions. You will gain skills to initiate conversations about consent at home, learn what tools they need for safe playdates and sleepovers, and strategies to prevent online harm. Jo has worked as a trauma therapist for children and teenagers, runs workshops and support parents around the country on keeping their kids safe in the real and digital world.



Come along on Tuesday and Thursday's between 8:30am-8:45am in the Garden Table Kitchen.

All students welcome



Please send togs, towel, goggles (optional) in a bag on their swimming day. If your child is unwell or has an injury and cannot swim, please send a message to their teacher. We have some spare togs and towels that we lend to children.



CHINESE CULTURAL CELEBRATION

COME ALONG AND
LEARN HOW TO MAKE
DUMPLINGS & MORE!

22 MARCH 2024
3 PM
RSVP TO LISA

LISAC@PPSTEATATU.SCHOOL.NZ

Meet in the
staffroom at
Peninsula Primary



Cece, Elissa and Phoebe are leading a food drive for Brownies and we'd love your support! Check out the details below and consider contributing to make this initiative a success. Your generous donations will make a significant impact and help us support those in need. A big thank you to Cece, Elissa and Phoebe for taking the lead in making a positive difference in our community through this thoughtful food drive!



Food bank collection

Donate by
21st of
march



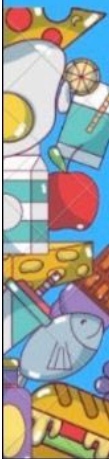
Please donate canned or dried food and lunchbox snacks such as crackers biscuits and muesli bars.

DROP-OFF LOCATION

out side of room 12



Cece Redgwell room 7





Netball Waitākere Future Ferns Year 1-8 Have a Go and Registration Day.

NO experience needed and ALL future FERNS levels welcome (Year 1-8)

- Saturday 9th March 2024
- 10.00am-1.00pm
- FREE
- Games & activation stations
- Meet your favourite MG Northern Mystics Players
- Register with one of our Amazing Clubs
- Sausage Sizzle

KIDS SOCIAL

Ages 5-12yrs

TENNIS NIGHT

**Join the fun at
Te Atatu Tennis Club!**



**Starting Wednesday 28th February (weekly)
4.30pm - 6.00pm - Pizza supplied
\$5 for non-members | Free for members**

We are pleased to announce our KIDS SOCIAL TENNIS sessions will be starting back up next week - 28th February!!

Sessions will be running WEEKLY from 4.30-6pm, pizza provided. Bring them down to enjoy a hit with their peers.

\$5 for non members - Free for members.



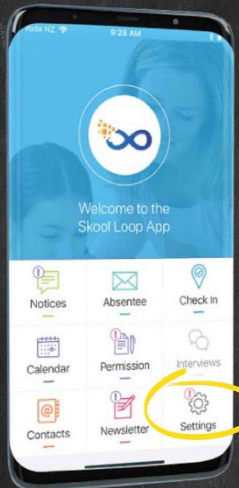
Each Friday - during **Term 1** we will have a coffee cart coming to school between 8:15-9:15.

The coffee cart will be in the Junior turf area, Grab a coffee, catch up with other whanau and kick start your day



Did you know that Swimsation offers discounted lessons exclusively for Peninsula Primary School students? Want to know more or book some lessons? Check out their website: <https://swimsation.com/te-atatu/>


HOW TO SUBSCRIBE TO NOTICE GROUPS



TO JOIN YOUR SKOOL LOOP APP NOTICE GROUPS, SIMPLY FOLLOW THE STEPS BELOW:

- > Go to the 'Settings' tile in the bottom right hand corner of the Home Screen
- > Go to 'Subscribe to groups'
- > Tap to select the group/s you would like to receive notifications from
- > You're good to go - you will now receive all notices sent to the groups you have subscribed to

NEED MORE INFO?
Call Skool Loop Aus on 1800 203 493
Call Skool Loop NZ on 0800 238 379



Don't Get Left Behind This Year!

Download our Skool Loop app to keep up to date with school information. Notices, newsletters, absentee notifications and much more.



Simple free download:
In Google play & App Store search 'Skool Loop' to choose our school once installed.



THE SKOOL LOOP APP

JUDO

Classes on the Peninsula

Judo classes are happening every Wednesday afternoon from 5:30 to 6:30 in the school hall of Rutherford Primary School. The class next Wednesday will be a free have-a-go session for all newcomers to try out this Olympic sport which offers exercise, discipline, respect and other benefits.

Coach Johan is a 6th Dan, professional coach, and the owner of Nippon Judo Schools. Feel free to contact him on 021-113-2105 or bosjudo@hotmail.com if there are any questions.

Everyone is welcome to join the session on Wednesday afternoon.



JOIN OUR PERFORMING ARTS CLASSES !

WEST AUCKLAND LOCATIONS:

**HOBSONVILLE, HUAPAI, TE ATATU,
RANUI & HENDERSON**

**STILL NOT SURE? COME ALONG FOR A FREE TRIAL!
NEED MORE CONVINCING? ENROL NOW AND YOU'LL BE
PROTECTED WITH OUR PFORM GUARANTEE. IF YOU CHANGE
YOUR MIND AFTER FOUR WEEKS OF CLASSES, WE'LL REFUND
YOU IN FULL. NO STRINGS ATTACHED.**



PFORM.NZ



@PFORM.NZ



INFO@PFORM.NZ



Easter Holidays are coming up

Good Friday 29 March
Easter Monday 01 April
Easter Tuesday 02 April - No school on this day

Back to school Wednesday 03 April



Skids will be opening a Full day session from 8.30 am to 6 pm on **Tuesday 2nd April** for the Families who need support with child supervision.



Term 1 2024

Important dates to remember:

MARCH

Week 6

Wednesday 13 - Athletics Cluster at Rutherford College

Thursday 14 - Ice blocks - Gaga pit fundraiser

Thursday 14th 7.15-8.15 pm - Parent meeting re Kids Consent and Safety

Sunday 23rd - Dumpling workshop



2024

Term 1 - Wednesday 07 Feb - Friday 12 April

Wednesday 07 Feb - First day back to school

Friday 29 March - Good Friday (Public Holiday)

Monday 01 April - Easter Monday (Public Holiday)

Tuesday 02 April - Easter Tuesday (school Holiday)

School Breaks for holidays Friday 12 April 3pm

Term 2 - Monday 29 April - Friday 05 July

Monday 29 April - School starts for Term 2

Monday 03 June - King's Birthday (Public holiday)

Friday 28 June - Matariki (public holiday)

School breaks for holidays Friday 05 July 3pm

Term 3 - Monday 22 July - Friday 27 September

No public holidays

School breaks for holidays Friday 27 September 3pm

Term 4 - Monday 14 October - Wednesday 18th December

Monday 28 October - Labour Day (public holiday)

School finishes on Wednesday 18th December 1pm (please note change of last day)

Peninsula Primary School

Thanks to the below businesses for sponsoring our school app:



If you would like to advertise on the Peninsula Primary School Skool Loop App please email Content@skoolloop.com



To download our app: In Google Play & App Store search 'Skool Loop' & choose School once installed.

Ticket link - <https://www.trybooking.com/nz/events/landing/10511>

Facebook Event Link - <https://facebook.com/events/s/captain-festus-mcboyles-pre-ch/1508884376581531/>

Newsletter is Proudly Sponsored by the following:



RayWhite.

Tania Greer
lives local sells local



M 021 709 660 | tania.greer@raywhite.com

Need a home loan for your next move?

THE
Mortgage
SUPPLY CO. NEW ZEALAND

Call Rob for personalised mortgage advise to help you achieve your goals!
First Home Buyers - Refinancing - Property Investment - Bridging Finance
You relax, we'll take care of everything.



**CALL ROB
GILFILLAN**
Your local Mortgage Adviser

📞 022 696 1122
✉ rob.gilfillan@mortgagesupply.co.nz
🌐 www.mortgagesupply.co.nz



Thursdays
Te Atatu Peninsula
Community Centre

SING - DANCE - ACT

www.pform.nz

0800 736 766

DRAMA / HIP-HOP / SINGING

On the fence about selling?
Let's have coffee

Local and experienced
professional advice
you can trust



Jasjeet Ahuja

022 199 1007
j.ahuja@barfoot.co.nz
barfoot.co.nz/j.ahuja

**BARFOOT
THOMPSON &**
LICENCED REAAL 2008



SCRATCHPAD
TECHNOLOGY LEARNING CENTRES

Henderson

CODING | ROBOTICS | 3D PRINTING



AFTER SCHOOL SESSIONS

WEEKEND SESSIONS

SCHOOL HOLIDAY PROGRAMMES

SCHOOL CODING CLUBS

4 Waipareira Avenue, Henderson

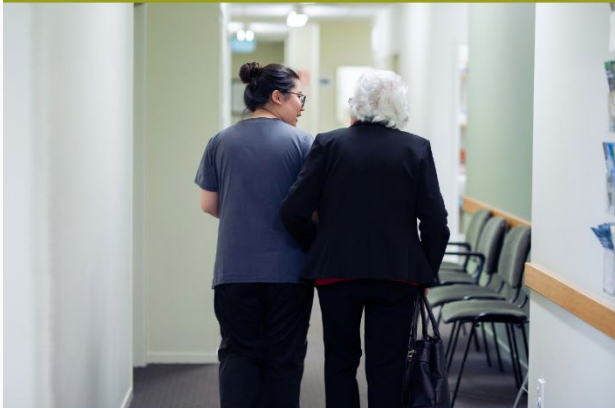
info.henderson@scratchpad.co.nz

scratchpad.co.nz (09) 815 0825

PENINSULA MEDICAL

The heart of community health care

Same day GP appointments available!



peninsula medical

Peninsula Medical Centre

382 Te Atatu Rd, Te Atatu Peninsula

www.peninsulamed.co.nz

Phone 834 6300



Whether you're a First Home Buyer,
negotiating your current rates
or purchasing a new property

- I can help, get in touch for a review.

Contact Emma Boyd,
Your Local Mortgage Adviser
emma@futuremortgages.co.nz
022 133 6628



www.futuremortgages.co.nz