

Newsletter



"Growing Great People"
Te Whakatipu Tangata Nui

45 Whitmore Road, RD1, Gisborne 4071

Phone/Fax: 06 862 5725 • Email: office@ormond.school.nz

www.ormond.school.nz



Kia ora Parents, Caregivers and Whānau,

Welcome to the end of a very wet week nine, as we head towards the final week of what has been a fairly busy but rewarding term.

We extend a warm welcome to our newest member of staff, our new office administrator, Ashlee. Ashlee has had a great first week and has slipped into our school routine seamlessly, as if she has been here all along. Welcome to our Ormond learning community Ashlee, it is great to have you as a part of our team.

We are looking forward to week ten and our Whānau learning Conversations. As mentioned in previous newsletters, these are extremely important conversations that help build the learning relationship between school and home. It is also a part of the learning fabric of our school's beliefs that students play an important part in their learning journey and therefore need to know where they are placed with their learning and where their next steps in learning will take them. With the mid-year progress reports coming home today, this is the perfect opportunity to talk with your child about their learning in preparation for our Whānau learning Conversations. Please remember that school will finish at 12:30pm on Tuesday to accommodate our Whānau learning Conversations that will be starting at 1:00pm. The bus will run at the earlier time of 12:30pm.

School will run as normal on Wednesday. If you have not made a time yet to visit your child's class to see their learning progress and speak with their teacher(s), there are still time slots available to do this on either Tuesday or Wednesday. Please use the Skool App to do this or contact the office to make a time.

Running alongside of these Whānau Learning Conversations will be the opportunity to provide your thoughts and perceptions of our school through the lens of a SCOT analysis. A SCOT analysis is an acronym for the following; Strengths - What we do well? What do you see as our advantages? Challenges - What are the barriers to achieving our goals? What are the matters that are not going well?, Opportunities - Which are the best opportunities in the near future? What opportunities have the potential to bring benefits or advantages to our school? Threats - What potential obstacles could we face? Are there new expectations that may affect us? This analysis provides us with an internal view of how and what influences impact our organisation, whilst providing us with information that will help inform our schools strategic plan for improvement for the next three years. There will be a template for you to complete after your Whānau Learning Conversations. We encourage you to take the time to complete this task, your insights are valued and appreciated, particularly when planning for learning opportunities that have a direct impact on our tamariki. I will be available to help or answer any questions when completing this piece of insight gathering.

Please stay dry, warm and safe over the weekend, do not take any unnecessary risks and if you don't need to travel, stay at home! We hope to see everyone on back on Monday for a great final week of our term.

Noho ora mai rā, Stay safe and have a great weekend. Jonathan Poole - Tumuaki / Principal

Key Dates Term Two

- **23rd June** - Mid year reports home
- **26th June** - BOT hui
- **27th June** - Whānau Learning Conversations
- **28th June** - Whānau Learning Conversations
- **30th June** - Last day of Term

Note: Depending on circumstances we may not attend all events. Dates are subject to change.



GROWING GREAT PEOPLE
TE WHAKATIPU IWI NUI



ORMOND SCHOOL LEARNERS ARE GREAT PEOPLE WHO ARE:

Communicators, Collaborative, Connected, Confident, Thinkers, Self managers, Shows Perseverance

Don't forget:

OUR 4 R'S

AT ORMOND SCHOOL ARE:

**RESPECT
RESILIENCE
REFLECTION
RESPONSIBILITY**

When we are using these 4 values, we are
BEING A GREAT PERSON!

F.L.A.X Award Recipients

TAI

Tai, I can't believe you have started school only 3 weeks ago. You are already so settled it seems like you have been in Kōwhai for a long time. You have impressive mat manners and are keen to participate in class discussions always in a respectful way, putting your quiet hand up. You are keen to learn too. You are confident enough already to give everything a try and even to go swimming with another class, like you did yesterday! Ka mau te wehi!



FLEUR

Fleur, we have loved watching your confidence grow this term! We have been impressed this week with how focussed you have been on your learning - learning your rainbow numbers to 10 in maths and working hard to finish publishing your writing and your literacy activities. This shows that you are a self manager and you take time to present your learning to a high standard. Ka mau te wehi Fleur, keep being a Powerful Learner Superhero!



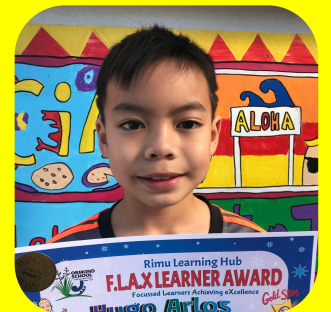
TED

Ted, this week you have shown excellent concentration and self management. After we heard about the Elasmosaurus fossils being discovered in the Hawkes Bay you got stuck into your research. You read and watched videos about the ancient marine reptile and took excellent notes. You then used the skills you have learnt during your cybersmart lessons to display the information you found on a Google Slide. It is great to see you drawing on many different skills to complete one project. Tumeke, Ted!



HUGO

Hugo you are a quiet and focused learner who isn't afraid to go into the Learning Pit. This we saw when you got tipped out of the boat at swimming. We could see you were a little nervous but you made sure you listened to what you had to do, and you were fine. This is what Powerful Ormond School Learners do. It doesn't matter where the learning is taking place its making sure you do your best, and that is you. Ka pai to mahi Hugo, well done!!!!



KEEP
NEW ZEALAND
BEAUTIFUL®

TIDY KIWI AWARD - WEEK 9

Rimu

BE A
TIDY
KIWI







**JULY
2023
SCHOOL
HOLIDAYS**

Virtual Reality

Tuesday 11 July 2023

Tamariki will explore a range of different Virtual Reality experiences and experiment with creating a VR experience of their own. The workshop will cover concepts of UX design, storytelling and 3D content creation.

Tamariki will be able to share their VR Experiences with friends and whānau after the wānanga.

Game Development

Wednesday 12 July 2023

Tamariki will play some retro arcade style games with us and then start designing and building their own retro arcade-style game. The wānanga will cover game narrative, block-based coding, character creation and UX design.

Tamariki will be able to share their games with friends and whānau after the wānanga.

Digital Art

Thursday 13 July 2023

Tamariki will experiment with digital art app Procreate to design and develop a Matariki-themed digital art piece.

Tamariki will be able to share their digital art pieces with friends and whānau after the wānanga.

Tamariki must bring a packed lunch and drink bottle.



**STEMM
Workshops**

Tues 11 July - Thurs 13 July

9am - 1pm daily

7-13 years / \$50 per day

Lawson Field Theatre

7 Fitzherbert Street

TŌNUI Collab invites young people to explore the diversity of STEMM - Science, Technology, Engineering, Maths and Mātauranga Māori - through innovative and collaborative STEMM learning.

TŌNUI Collab is a charitable trust committed to creating STEMM learning experiences that celebrate learning through exploration and experimentation.

**TŌNUI
COLLAB**

Gisborne 4010

www.tonucollab.com

**BOOK
NOW**

www.tonucollab.com
admin@tonucollab.com
0800 8 TONUI

@tonucollab
/tonucollab
@tonucollab

#HEAR4U

Ministry for Primary Industries
Manatū Ahu Matua



A Kia Kaha Tairāwhiti Event

**SAVE THE DATE
2 JULY 2023**

**Wellbeing • Mental Health
Resilience Event • Post Cyclone**

**Supporting those working
within Primary Industries.**

This is a free event.

022 103 6609 | ahear4ustory@gmail.com

hear4ustrust.com | [Hear4uProject](https://www.facebook.com/Hear4uProject) | [ahear4u_krissy_mack](https://www.instagram.com/ahear4u_krissy_mack)

Hear For You Trust is a registered Charity: CC59854



#HEAR4U

Based in Gisborne, Tairāwhiti, our charitable trust is dedicated to breaking the stigma around Men's Mental Health & Suicide Prevention by navigating HEALING pathways, sharing lived experiences & community connection.

**#SPEAKUP #ITSOKAYNOTTOBEOKAY
#RISEABOVECYCLONEGABRIELLE**

022 103 6609 | ahear4ustory@gmail.com

hear4ustrust.com | [Hear4uProject](https://www.facebook.com/Hear4uProject) | [ahear4u_krissy_mack](https://www.instagram.com/ahear4u_krissy_mack)

Hear For You Trust is a registered Charity: CC59854

**FTC
PRE-ACADEMY**

The Federation Talent Centre Pre-Academy is a 8 week development programme aimed at both male & female players aged 9-12 years who are looking to develop technically & tactically. Players will have the opportunity to represent their region and challenge themselves against others regions from across the Central Federation over three game days. The pre-academy is an excellent introduction for players looking to move into the FTC programme in the future.

Register via MYCOMET or for more information contact CDO Lee Smith | lee@centralfootball.co.nz



- 3 REGIONAL GAME DAYS
Regions involved: Hawke's Bay, Manawatu, Whanganui, Taranaki, Gisborne/Tairāwhiti
- GAME DAY 1
6th August 2023
- GAME DAY 2
27th August 2023
- GAME DAY 3
17th September 2023
- AGES:
9-12 YEAR OLD BOYS & GIRLS
- COST: \$140



Please be advised that it is our intent to host all-girls teams in this programme this year, female players will have this option alongside playing mixed grade.

NOTICES & UPDATES

After School Sign Out: When leaving the school at the end of the day please make sure that you see the duty teacher to sign your child out. This is so we are sure that children have left the school safely accompanied by their caregiver or an adult that has consent to pick them up.

Woolshed clean out: Would you like your woolshed cleaned out? We are collecting waste wool for compost/mulch so if you have any you'd like to get rid of we'll come and get it!
Phone: Sarah Smith on 021 2049 164.

Jars needed: If you have any spare jars with lids at home, please bring them to school and drop them into Karaka. These will be used for Matariki activities next week.

New enrolments: If you know of anyone who is intending to enrol their child at school this year and next year, please contact the office to let us know.

Sports Draws

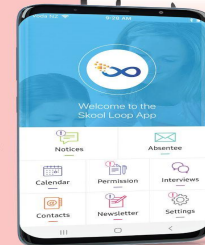
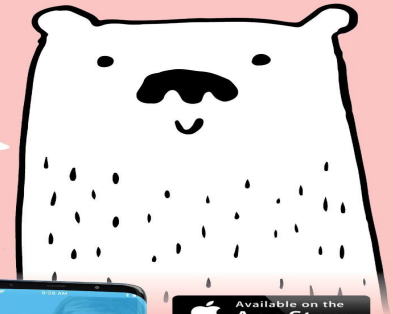
All Sport Cancelled

Hey there!

Just popping in to check you have downloaded our school app?

Stay in the loop with Skool Loop.

- ✓ Events
- ✓ Notices
- ✓ Instant school messages
- ✓ Book interviews
- ✓ Absentee
- ✓ Newsletters
- ✓ Permission Slips

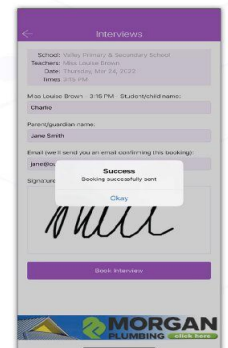
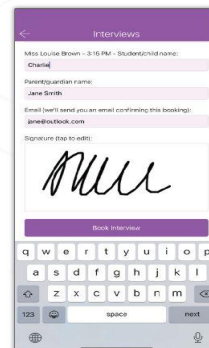
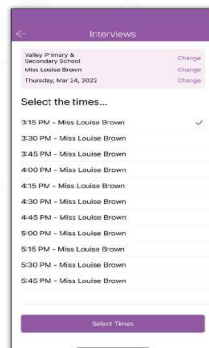
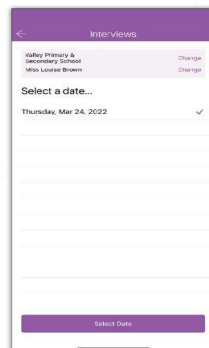
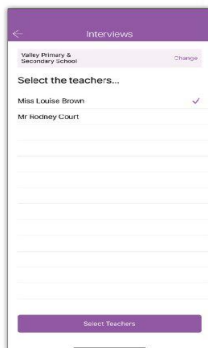


Simple free download: In Google play & App Store search 'Skool Loop' & choose our school once installed.

Booking Interviews with



Download **The Skool Loop App**. A simple 100% free download: In Google Play & App Store search 'Skool Loop' & choose our school once installed.



PLEASE SUPPORT THOSE WHO SUPPORT US



Proud to be supporting our rural communities

Simon Bousfield
027 665 8778

Bousfield Macpherson Ltd, Bayleys
Licensed under the REA Act 2008

Stephen Thomson
027 450 6531

Bousfield Macpherson Ltd, Bayleys
Licensed under the REA Act 2008

BAYLEYS ALTOGETHER BETTER

Residential / Commercial / Rural / Property Services

East Coast
SHEARING

Friendly, family-oriented team that can get your shearing done. Catering for lifestyle to stations.

BEAU GUELFY - 027 842 4172

GILLIES
Electrical 2017 Limited

Electrical Repair & Maintenance Specialists
Residential & Commercial

380 Palmerston Rd, Gisborne
Phone (06) 867 9022

MASTER ELECTRICIANS

www.gillieselectrical.co.nz

GH Williams ENGINEERING

Gene Williams
PRINCIPAL

manufacturer of fruit handling equipment, tractor implements & general engineering

RD 1, 31 Brown Road
Gisborne,
New Zealand
Ph/Fax 06 862 5811
Mobile 021 222 0264

ADVANCE TECH TRACTOR SHOP
4 SALES 4 PARTS 4 SERVICE

Open Weekdays
9am-5.30pm

1150 Matawai Rd, Ormond
Mike Longley 021 311 067

www.advancetech.shop

O.T.T CROP PROTECTORS

Paul Gordon Contracting Ltd

Overhead Crop Canopies
Wind Break Construction & Hot Houses

Phone 027 282 9302
paulgordon.ott@gmail.com

Eastland Veterinary Services

GISBORNE | 743 Gladstone Rd | 06 867 9405
WAIROA | 46 Freyberg St | 06 838 6099
www.evs.co.nz

evolutionwireless
...we do internet.

- Rural Knowledge
- Local Support
- Local Reliability

Ultra-fast rural broadband with extensive Eastland coverage and outstanding local support. We will build the solution to get you online!

0800 4 WIRELESS
0800 494 735

join the evolution!

- sales@ew.net.nz
- facebook.com/evolutionwirelessnz
- Level 2, 40 Reads Quay, Gisborne 4010

Oakfield Limited

Drainage Design & Assessor • Asbestos Assessor

- Building Surveys • Air Monitoring
- Wastewater Assessments & System Design
- Site Assessments • Asbestos Testing

Independent assessor with over 40 yrs of experience

Request a quote from me, Alan Hall:
Phone: 06 862 5597 | Mobile: 027 272 4907
Email: oaklandtruffle@xtra.co.nz

Manuel Agrispraying

BROADACRE SPRAYING SERVICES

Ph Hamish 027410 0881
manuelagrispraying@gmail.com

WRS LIVESTOCK SCANNING SERVICES

Accurate Pregnancy Scanning of:
Ewes • Cows • Hinds

All enquiries 06 836 7430
www.wrslivestockscanning.co.nz

GIZZY WASTE
SEPTIC SUCTION & SKIP BINS

06 867 3606 • 027 434 0924
info@gizzywaste.co.nz • www.gizzywaste.co.nz
Formerly known as Wayne's Waste #LOCALS SUPPORTING LOCALS

Eastland
Building & Farm Supplies

Call us for a quote on your fencing and building supplies. We offer competitive prices, quality product, and excellent service.

Open Mon-Fri 7am-5pm & Sat 8:30am-12pm. 19-21 Mahia Ave, Wairoa
T: 06 838 6948 E: info@eastlandbfs.co.nz www.eastlandbfs.co.nz