

Tēnā kautau ngā mātua, ngā kaumātua, ngā kaitiaki a ō tātau tamariki mokopuna. We've almost reached the end of Term 2 and it's been a busy time for our tamariki. Haka, classroom learning, sports and all the other things that keep our students actively learning. We've begun kōrero with Ministry of Education around changing our kura status to Designated Character. We've been on this road for quite some time and the community feedback – albeit minimal at times – has been rich and much appreciated. We will keep our hapori in the loop along this path so that we all know what's happening at kura.

Attendance We understand when students and whanau need to be away from kura. Please keep us informed when your child is away. It helps us monitor what tamariki need to catch up. We don't need a novel, just why they might be absent and how long. Everyone's bit helps to keep our students learning.

Student contact details

It is important that all student details are correct and updated regularly. Please contact the school office if you need to make any changes to your child's details.

Canteen

Tamara and Zarn have been doing an excellent job in our canteen creating nutritious healthy lunches for our tamariki. Thanks both and Pāpa Gilbert who is rarely having to empty our scraps as he has in previous years.



2024 TERM DATES

Term 1 – 30 Jan to 12 Apr

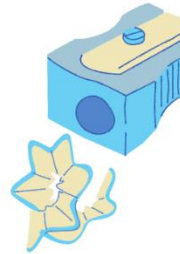
Term 2 – 29 Apr to 5 Jul

Term 3 – 22 Jul to 27 Sept

Term 4 – 14 Oct to 18 Dec

Whakataukī: Tauaki te tū, taiki te rere, Ōkōrero kia mau

Vision: To provide a safe and caring learning environment set in Ngāti Awa ki Rangitaiki tikanga where each person is valued and empowered with confidence, knowledge, pride, a love for learning and a sense of belonging that they may carry throughout their life journey.



Reminders:



**SCHOOL CLOSED:
Next Friday 28 June
due to Matariki holiday.**



**Term 2 end date Friday 5 July.
Kura will finish at 12pm.**



2024 TERM DATES

Term 1 – 30 Jan to 12 Apr

Term 2 – 29 Apr to 5 Jul

Term 3 – 22 Jul to 27 Sept

Term 4 – 14 Oct to 18 Dec

Whakataukī: Tauaki te tū, taiki te rere, Ōkōrero kia mau

Vision: To provide a safe and caring learning environment set in Ngāti Awa ki Rangitaiki tikanga where each person is valued and empowered with confidence, knowledge, pride, a love for learning and a sense of belonging that they may carry throughout their life journey.