



Glenavy SCHOOL

RD 10, Glenavy, Waimate • Phone: 03 689 3856 • Fax: 03 689 2745

Email: office@glenavy.school.nz



Newsletter



www.glenavy.school.nz

Principal: Kate Mansfield principal@glenavy.school.nz
 Office: office@glenavy.school.nz
 Telephone: 036893856
 Website: www.glenavy.school.nz

FACEBOOK- Glenavy School NZ
SCHOOL ACCOUNT NUMBER NZ 060941-0494989-00

Bus Drivers

Magic Bus - Al Stewart

Ring or text before 7:30am 021 0886 3249

Flames Bus - Barry Duff

Ring or text before 7:30am 027 238 6241

White Minivan - Graham Brickland ring or text
 before 7:30 am 021 039 9655 or 03 689 6415

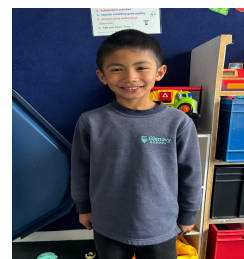
Dear Parents,

Our newsletter is out today Thursday as tomorrow we will be flat out with our Athletics Day. I look forward to seeing as many of you at some time during the day. We have Papakaio and Ardgowan 7 year olds and above coming to compete in our Athletics Day. Please make sure your child is wearing appropriate footwear and clothing. They will also need to have a drink bottle filled with water and their school sun hats.

Farewell this week



We say a big farewell to Georgina and Khent Eseo and their family. They have been at Glenavy School for the past 2 years and we will truly miss them all. We wish you all the best for your new school.



Junior Athletics

This year the 5 and 6 year old students will be going to Papakaio School to have their Athletics Day with them. They leave here on the bus at 10.40 and will have activities from around 11.30. They will finish up and leave Papakaio around 1.15 then return back to Glenavy in time to watch the senior relays.

Senior Athletics (7-13 year olds) (Age as from the 1st October 2023)

We start at 10am and have 3 stations before lunch. Lunch is at 12:20pm and then 2 stations after lunch. We finish with relays at 1:50-2:20. Again if you are at school you may take your children home then. Make sure you tell the bus teacher.

BBQ lunch

The school is running a BBQ. Can the children please bring the money on Friday morning if they have not already preordered. Parents can buy their burgers and sausages on the day.

Sausage and Bread \$2.50

Beef Burgers \$5

ALL CHILDREN NEED SUN HATS, DRINK BOTTLES OF WATER AND RUNNING SHOES.

ALL PARENTS WELCOME TO COME AND WATCH.

Trophies and Shields

Can we please have all 2023 trophies and shields back to school ASAP in order for the staff to start the big organisation of reallocating them for our 2024 Prize giving.



Halloween Disco

Friday Night at the Glenavy Hall

Bring a can for entry- (All donated to the food Bank)

6pm-7:30pm- please be on time to pick your children up from the hall

3 and 4 year Olds

If you have a 3 or 4 year old at home and are intending them to be enrolled at Glenavy School could you please email Rachel in the new entrance Class with their date of birth and name. This just helps with forward planning. Her email address is rachel@glenavy.school.nz

Year 7 and 8 camp to Christchurch

Next week the year 7 and 8 students will be away in Christchurch for a fun filled week long camp. We will be leaving school at 8am sharp so all parents will need to drop your child off at school by at least 7:50am. Please make sure all students have the correct gear and everything is named. Also every student needs to have brought one food item for a night time meal as well as some baking. Mr Ross will communicate with the school office about arrival time back at school and this will be posted on Skool loops.

Flames Bus

Robyn will be continuing to drive the Flames Bus until further notice. Her phone number is 027 521 9070. Please ring or text her if your child is not going to be on the bus.

Book Fair

The final amount from our Book Fair was \$2,503.00. That means we made about \$750.00 for our library. Thank you to everyone who brought books and supported the school.

Have a great Weekend
 Kate Mansfield

Upcoming Events - Term 4

Week 4 - Term 4

Monday 4th November

- Yr 7/8 Camp in Christchurch
- Yr 5 Camp to Mt Cook
- Subway Orders In



Wednesday 6th November

- PTA Meeting @ School 2.15

Thursday 7th November

- Basketball Session



Friday 8th November

- Gumboot Friday - Mufti Day gold coin donation

Week 5 - Term 4

Monday 11th November

- North Otago Athletics
- Swimming Starts (Weather & Heat Pump Permitting)



Tuesday 12th November

- EOTC Yr 7&8 12.30-3pm
- Cricket Coaching Day

Wednesday 13th November

- Wheelie Day

Thursday 14th November

- Rural Yr8 Science Day in Oamaru
- Basketball Session #2



Tomato Plants for sale \$5.00 per plant.
If you are interested please contact the school office.

★★★★ **Glenavy School Value Awards** ★★★★★

Principal's Award - **Mareya Mohamed** - **Respect** - Always keen to help others, organising and sorting the cleaning of our water fountains. Thank you so much Mareya.

Kororā - **Lilly Lewis** - **Self Management** - You have been working really hard on your teen numbers this week and now you know them all. Well done Lilly. I am proud of you.

Piwakawaka - **Eva McCulloch** - **Self Management** - You are a super worker in class, always on task doing the right thing and contributing to class discussions.

Tūi - **Georgina Eseo** - **Self Management** - You have been a positive and friendly member of our class. The school values were always visible throughout your learning. We are going to miss you!

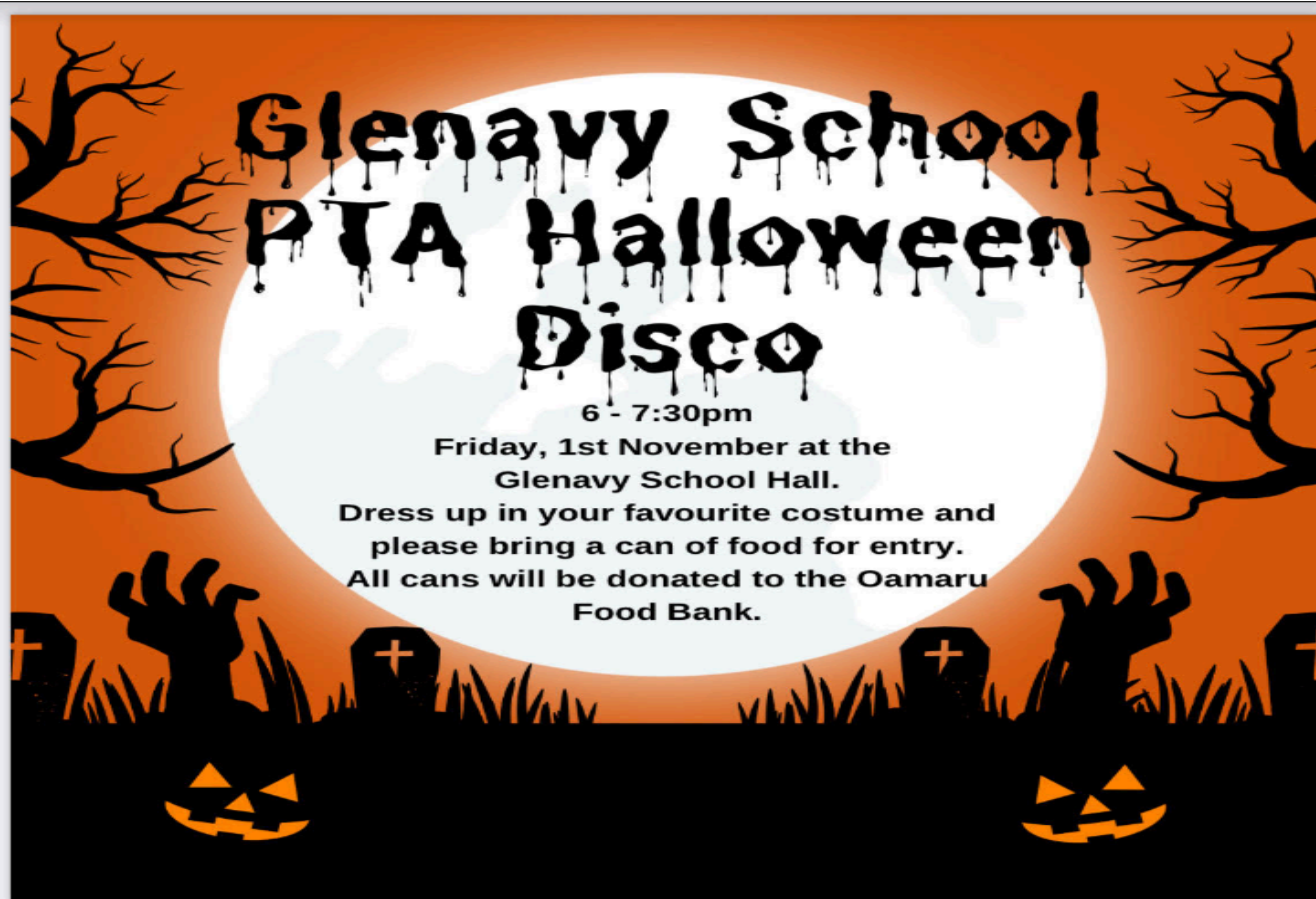
Ruru - **Trion Tabucol** - **Respect** - You are a respectful member of our class, you are always looking out for your peers, helping when you can and ensuring everyone has a smile on their face!

Kea - **Andrei Rivera** - **Self management** - For excellent progress in Maths. Well done!

Karearea - **Tessa Ferguson** - **Respect** - Always showing the Glenavy School values both inside and outside of the classroom and doing it with kindness and humility.

Mr Dowling Award - **Anthony Rivera** - **Self Management** - Anthony was super engaged during our basketball session he not only listened and joined in he scored a fantastic basket that won a point for his team, it was magic.

Maths - **Rain Estillore** - For finding patterns, being able to express these as algebraic expressions, and then to apply these to predict patterns with different values.



PLEASE SUPPORT THOSE WHO SUPPORT US



**DAIRY HYGIENE, AGRI CHEMICAL/SEED,
CLEANING MATERIALS, STOCK FEED
AND MUCH MORE.**

Waimate Store, 62-66 Queen Street,
Waimate. p. 03 6891230
Oamaru Store, 2 Industrial Place,
Oamaru North. p. 03 4331240

**FOR ALL YOUR
ELECTRICAL NEEDS**

- IRRIGATION
- DAIRY SHED & PLANT
- DOMESTIC SERVICES
- COMMERCIAL SERVICES
- APPLIANCE REPAIRS
- SECURITY & CCTV
- HEAT PUMPS & VENTILATION



**PLUNKET
ELECTRICAL**

ON CALL 24/7 - 0800 434 840

**STILL'S FARM
MACHINERY**

Proprietors: Kerry & Raewyn Still

- Hydraulic Hose Repair Service
- All Makes & Models of Machinery
- Tractor & Farm Machinery Repairs in Workshop or on Farm

SH 1, Pukeuri Junction, Oamaru 9436
Ph. 03 431 3760 | Cell. 027 433 9030 | Fax. 03 431 3764
AHL 03 434 9443 | www.stillsfarmmachinery.co.nz

Veterinary Centre

19 Redcliff Road, Glenavy
Phone/Fax: 03 689 8118

Hours: Mon-Fri 8.30am - 4pm

"The leading light in animal health"

GLENNAVY

After Hours
Emergency number **0800 838 111**
by the Big Blue Cross

**MAINLAND
SPREADING**

Call (03) 439 5501
or Kylie 027 484 7646
office@mainlandgs.co.nz

Call on the friendly,
helpful staff for all your
farming supplies.



GRAIN & SEED - CHEMICALS
ANIMAL HEALTH - STOCK FOOD
FENCING - DAIRY REQUIREMENTS

Kelvin Mansfield 027 544 1171
Gerard Dawson AH 437 0725
Matthew Paton 027 443 4701
Craig Dineen 021 109 1087
Nick Walters 027 224 4057

3 USK STREET OAMARU | WWW.NOPS.CO.NZ | 434 7766

Proud Sponsors of Glenavy School



For all your
Dairy Hygiene needs:
Jason Birchall
021 494 690
jason.birchall@ecolab.com



Local knowledge that counts

Civil - Commercial - Rural - Domestic



Phone: (03) 689 7881

e-mail: enquiry@rooneygroup.co.nz

**Hope
& Associates
Legal**

Barristers & Solicitors

120 Queen St, Waimate (03) 689 6331
76 Thames St, Oamaru (03) 434 9930
Mon to Wed 8.30am to 3pm & Thurs & Fri 8.30am to 5pm
Contact us today for all legal assistance.

SJ Allen Ltd

100% LOCALLY OWNED AND OPERATED

- Farm Effluent Ponds & Sump Cleaning
- Silo Cleaning
- Septic & Holding Tank Cleaning
- Water Blasting of Cow Sheds & Drains
- Effluent Stirrer Available
- High Pressure Water Blasting



0800 155 669
Taking care of your business!



- AGRICULTURE WORK
- DRILLING
- SILAGE CHOPPING
- BALING
- CARTAGE
- SALES
- WOODCHIP

Jamie Barlow
Operations
Manager / Sales
027 200 55 72

Brad Cunningham
Ag Manager
207 200 55 71

Grant Kinsman
0274 344 819

Account Enquiries:
office@kinsmancontracting.co.nz Ph: 03 615 5084
www.kinsmancontracting.co.nz | kinsmancontracting.co.nz

Kawasaki can-am

**COLIN CLYNE
MOTORCYCLES**

P. 03 437 0559
419 THAMES HWY, OAMARU
WWW.COLINCLYNEMOTORCYCLES.CO.NZ



**HOME OF THE
GOLDEN FRIES**

- Think Local ... Buy Local
- Gluten Free • Carbon Zero
- 100% locally owned and operated • Using 100% locally-grown ingredients

Visit our Factory Shop at:
5 Makikihi Beach Road

www.makikihifries.co.nz



WAIMATE

45 Queen Street, Waimate
Ph: (03) 689 7100 E: ruralmeats@xtra.co.nz

- makers of quality small goods
- mobile abattoir service and wild game processors

MAUNGATI LIME CO LTD

Suppliers of High Quality Lime

- Track Rock • Lime Chip • Aggregate

Proud to Support Glenavy School

Alistair Johnson 0274 338 735
Sean Johnson 027 653 1722
Holme Station, RD2 Timaru. Ph: 686 4859