



Glenavy SCHOOL

RD 10, Glenavy, Waimate • Phone: 03 689 3856 • Fax: 03 689 2745

Email: office@glenavy.school.nz



Newsletter



www.glenavy.school.nz

Principal: Kate Mansfield principal@glenavy.school.nz
 Office: office@glenavy.school.nz
 Telephone: 036893856
 Website: www.glenavy.school.nz

FACEBOOK- Glenavy School NZ
SCHOOL ACCOUNT NUMBER NZ 060941-0494989-00

Bus Drivers
Magic Bus - Al Stewart
 Text before 7:30am- 02108863249

Flames Bus - Frank Greig
 Ring or text before 7:30am Ph 0272162667 or
 03 6898131

White Minivan - Graham Brickland ring or text
 before 7:30 am 0210399655 or 036896415

Dear Parents,
 Pet day today and all the children are very excited with the fun that is about to happen. It is always one of the highlights and the children enjoy the day. We look forward to seeing you all today from 12:30.



We have the book fair in the Senior Art Room so please come and visit it and buy some special books for your children. All money raised will go back into buying more books for the library.

Sunhats-

This term ALL children need to wear a sunhat as per our policy. Hats are NOT caps, they must be wide brimmed and if possible blue. Hats can be purchased at the school office for \$15.

Welcome to our 2 new students into our school.



Charles Adams
 who has joined
 Ruma Kōrora



Tashiya Kuruppuge
 who has joined
 Ruma Kōrora



School Trophies-

It is that time of year. Can I please have all trophies awarded last year, returned ASAP. We would like to get sorted for the end of the year Prize Giving.

Athletics Day

Next week we have Athletics Day on Friday, so please make sure your children have running shoes, drink bottles filled with water and a sunhat. The day starts at 10am and will be finished by 3pm. All parents are welcome to come and watch.

We have a BBQ, selling sausages for \$2.50 and Burgers for \$5.00. If the children can pre order on Friday morning this would help with numbers. I look forward to seeing you all next Friday. Please enjoy the long weekend and see you on Tuesday.

Regards
Kate Mansfield

Al Stewart our New Magic School Bus Driver



We are lucky to have a new bus driver for the white bus while Lynn is away.

He will be driving the bus from today until the end of the year.

Al Stewart phone: 02108863249

Please text before 7:30am if you are NOT on the bus.

Upcoming Events - Term 4

Week 3 - Term 4

Monday 23rd of October

- Labour Day Holiday

Friday 27th of October

- Athletics Day @ Glenavy School
- Halloween Disco at Glenavy Hall 6-7.30pm - **Please bring a can of food for entry.**



Week 4 - Term 4

Monday 30th of October

- Athletics backup day
- Subway orders in

Wednesday 1st of November

- Wheelie Day

Friday 3rd November

- Science Road 10.40-11.50 Yr 4-8
- Gumboot Friday - Mufti Day & Gold Coin Donation
- Toot a Can @ Night

★★★★ **Glenavy School Value Awards** ★★★★★

Principal's Award - Ally Mehring - Respect - For helping others in the class.

Kororā - Ollie Gibbins - Respect - For being a great help in class.

Pīwakawaka - Dylan Correa - Self Management - Well done on your writing this week Dylan! You have done an amazing job independently sounding out all the words you want to write.

Ruru - Nethuka Maddumage - Self Management - You have become so confident in and out of the classroom. It is fantastic to see. Ka Pai!

Tui - Johara Rivera - Respect - For your kind and supportive actions towards your new classmates, you have really shown your helpful nature. Well done Johara, keep it up!

Kea - Emily Hamilton - Respect - For always having a smile, helping others, being an awesome friend.

Kārearea - Shannlee Fetalver - Self Management - For a superb week both in class and on the sports field you are a superstar.

Maths Award - Jack Luff - For superb work with fractions and ratios.

Friday 27th October

**PTA
Halloween**

Disco

**Happy
Halloween**

Entry—bring a
can of food to
support

“Toot a Can”

6.00pm –7.30pm @ Glenavy Hall

Parents please collect your children at 7.30pm

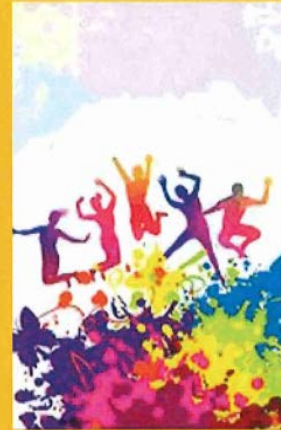


*Dress up as your
favourite Halloween
character*

Lower Waitaki Athletics Day

Glenavy School

Friday 27th October 2023



Sausage Sizzle \$2.50

Burgers \$5

Bottled Water \$2

*Children to pre order your sausages & burgers at your
school, adults can order on the day.*

We Need You

To Support Our Club

Do you have a keen interest in all things
poultry and would like to be a
part of a community of like-minded people?

Then come along to the
Waimate Poultry Club AGM
and help support the future of the club.

7:30pm, 31st October
@ Senior Citizens Hall,
55 Shearman St, Waimate



Waimate Poultry Club



k.n.wells@kinect.co.nz



028 4649 131



Ngā ratonga ki te manawa o te whenua
Heartland Services

COMMUNITY OUTREACH

Glenavy Hall
Wednesday 25th October 10am to 12pm
Ruane Street entrance
(Every fortnight following at the same time)

25th October **Multicultural Aoraki
Immigration Adviser
English Language Services**

22nd November **Public Health Nurse – Well Child
Before School Checks
WAVE Health Facilitator**

(Final day for the year 22/11/23 – returning 24/01/24)

For further information on any of our services, or to find out more about
Community Outreach and what we can do for you, call Karen on 03
689 6226, email karen.communitylink@gmail.com or go to our website
<https://www.communitylinkwaimate.org>

PLEASE POP IN FOR A CHAT



Multi Colour Dash 2023 - registrations are open!
SATURDAY 28 OCTOBER, starts 11am at the Oamaru Race Course.

<https://www.sporty.co.nz/.../multi.../Registration-form>



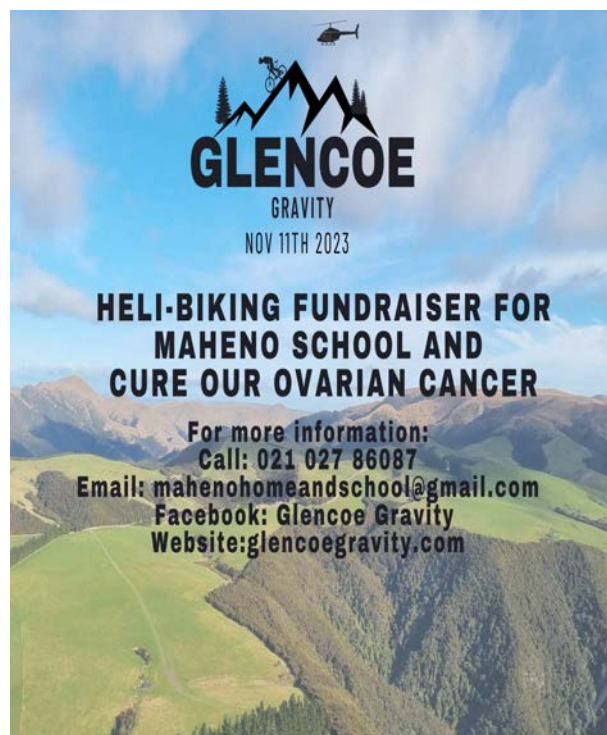


Pearsons Coachlines

20 h · 🌐

2024 Bus enrolments now being accepted.

Year 8 Pupils enrolling in High Schools from Country Schools examples: Hampden School, Kakanui School, Totara School, Five Forks School, Weston School, Papakaio School, Ardgowan School, Glenavy School we need to know that you will be using the High School bus service.



Donate A Calf Today!
 Friesian Bull OR
 Mixed sex Beef Cross

Who can raise the heaviest calf for 2023??

All money raised goes to help the Glenavy School Students

Prizes for the top-heaviest calves by sale

1st Prize - \$800
 2nd Prize - \$600
 3rd Prize - \$400

Glenavy School PTA Calf Fundraiser



How to donate:

1. Confirm number of calves/Glenavy PTA tags to be assigned
2. Select and tag chosen calves with a PTA tag provided and a Nait tag
3. Feed, Feed, Feed, Feed
4. Sale date to be confirm (early December 2023)
5. Calves to be delivered to the Waimate pavilion or we can arrange collection for sale
6. BBQ/bouncy castle and prize getters will be announced on the day

Email: Glenavyschoolpta@gmail.com

Glenavy School PTA are looking for farms and individuals to donate towards our Calf Fundraiser this coming 2023 season.

Please make contact if interested so we're able to get tags to you OR if wanting more information by emailing:

Glenavyschoolpta@gmail.com

All support is so much appreciated! 😊😊

PLEASE SUPPORT THOSE WHO SUPPORT US



**DAIRY HYGIENE, AGRI CHEMICAL/SEED,
CLEANING MATERIALS, STOCK FEED
AND MUCH MORE.**

Waimate Store, 62-66 Queen Street,
Waimate, p. 03 6891230

Oamaru Store, 2 Industrial Place,
Oamaru North, p. 03 4331240

**FOR ALL YOUR
ELECTRICAL NEEDS**

- IRRIGATION
- DAIRY SHED & PLANT
- DOMESTIC SERVICES
- COMMERCIAL SERVICES
- APPLIANCE REPAIRS
- SECURITY & CCTV
- HEAT PUMPS & VENTILATION



STILL'S FARM MACHINERY
Proprietors: Kerry & Raelyn Still
• Hydraulic Hose Repair Service
• All Makes & Models of Machinery
• Tractor & Farm Machinery Repairs in Workshop or on Farm
SH 1, Pakauri Junction, Oamaru 9436
Ph: 03 431 3760 / Cell: 027 433 8080 / Fax: 03 431 3764
Email: 03 434 9443 / www.stillsfarmmachinery.co.nz

Veterinary Centre
19 Redcliff Road, Glenavy
Phone/Fax: 03 689 8118
Hours: Mon-Fri 8.30am - 4pm
"The leading light in animal health"
GLENNAVY
After Hours
Emergency number **0800 838 111**
by the Big Blue Cross

MAINLAND SPREADING
Call (03) 439 5501
or Kylie 027 484 7646
office@mainlandgs.co.nz

Call on the friendly,
helpful staff for all your
farming supplies.
NORTH OTAGO PASTORAL SERVICES
GRAIN & SEED - CHEMICALS
ANIMAL HEALTH - STOCK FOOD
FENCING - DAIRY REQUIREMENTS
Kelvin Mansfield 027 544 1171
Gerard Dawson AM 437 0725
Matthew Paton 027 443 4701
Craig Dineen 021 109 1087
Nick Walters 027 224 4057
3 USK STREET OAMARU | WWW.NOPS.CO.NZ | 434 7766

Proud Sponsors of Glenavy School
For all your
Dairy Hygiene needs:
Jason Birchall
021 494 690
jason.birchall@ecolab.com
ECOLAB

Local knowledge that counts
Civil - Commercial - Rural - Domestic
ROONEY Earthmoving
Phone: (03) 689 7881
e-mail: enquiry@rooneygroup.co.nz

Hope & Associates Legal
Barristers & Solicitors
120 Queen St, Waimate (03) 689 6331
78 Thames St, Oamaru (03) 434 9930
Mon to Wed 8.30am to 3pm & Thurs & Fri 8.30am to 5pm
Contact us today for all legal assistance.

SJ Allen Ltd
100% LOCALLY OWNED AND OPERATED
• Farm Effluent Ponds & Sump Cleaning
• Site Cleaning
• Septic & Holding Tank Cleaning
• Water Blasting of Cow Sheds & Drains
• Effluent Stirrer Available
• High Pressure Water Blasting
0800 155 669
Taking care of your business! **Farmlands**

Kinsman Contracting
• AGRICULTURE WORK
• DRILLING
• SILAGE CHOPPING
• BALING
• CARTAGE
• SALES
• WOODCHIP
Jamie Barlow
Operations Manager / Sales
027 200 88 72
Brad Cunningham
Ag Manager
207 200 88 71
Grant Kinsman
0274 344 819
Account Enquiries:
office@kinsmancontracting.co.nz Ph: 03 415 5084
www.kinsmancontracting.co.nz kinsmancontracting Ltd

Kawasaki can-am
COLIN CLYNE MOTORCYCLES
P. 03 437 0559
419 THAMES HWY, OAMARU
WWW.COLINCLYNEMOTORCYCLES.CO.NZ

RURAL MEATS WAIMATE
45 Queen Street, Waimate
Ph: (03) 689 7100 E: ruralmeats@xtra.co.nz
• makers of quality small goods
• mobile abattoir service and wild game processors

HOME OF THE GOLDEN FRIES
Think Local ... Buy Local
• Gluten Free • Carbon Zero
• 100% locally owned and operated • Using 100% locally-grown ingredients
Visit our Factory Shop at:
5 Makikihi Beach Road
Makikihi fries
www.makikihifries.co.nz

MAUNGATI LIME CO LTD
Suppliers of High Quality Lime
• Track Rock • Lime Chip • Aggregate
Proud to Support Glenavy School
Alistair Johnson 0274 338 735
Sean Johnson 027 653 1722
Holme Station, RD2 Timaru. Ph: 686 4859