



Glenavy SCHOOL

RD 10, Glenavy, Waimate • Phone: 03 689 3856 • Fax: 03 689 2745

Email: office@glenavy.school.nz



Newsletter



www.glenavy.school.nz

Principal: Kate Mansfield principal@glenavy.school.nz

Office: office@glenavy.school.nz

Telephone: 036893856

Website: www.glenavy.school.nz

FACEBOOK- Glenavy School NZ

SCHOOL ACCOUNT NUMBER NZ 060941-0494989-00

Bus Drivers

Magic Bus - Al Stewart

Ring or text before 7:30am 021 0886 3249

Flames Bus - Barry Duff

Ring or text before 7:30am 027 238 6241

White Minivan - Graham Brickland ring or text
before 7:30 am 021 039 9655 or 03 689 6415

Dear Parents,

We can chalk up another hugely successful week here at the mighty Glenavy School. I just want to acknowledge what amazing students we have here at school. It always makes me so proud when I get outside members of the community saying how polite and respectful our students are. It really makes you appreciate the culture and mana we have here at this very special school. It also highlights the outstanding work our families, teachers and the wider school community are doing to empower these strong capable students. You all deserve a pat on the back.

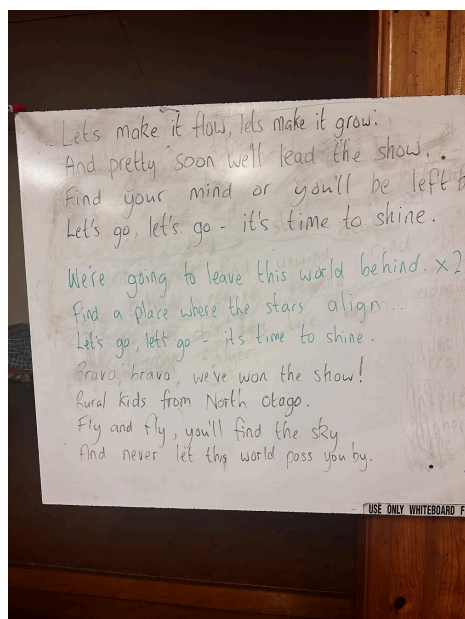
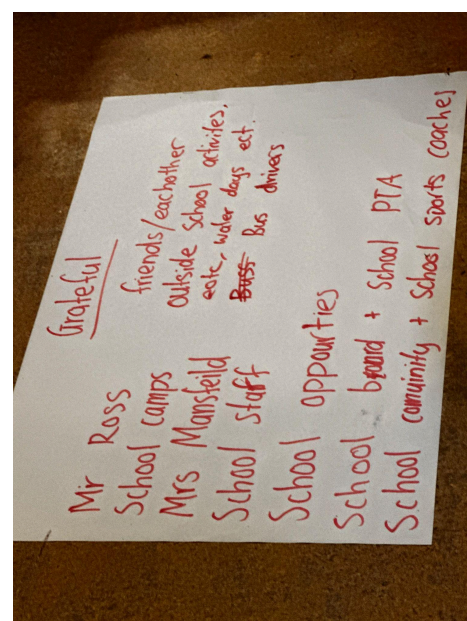
Farm Safety Day

Well the weather held out... just on Wednesday for our Farm safety day albeit very fresh. Firstly I would just like to say a huge thankyou to our wider community that come in and help run modules on the day. Without you, days like this simply cannot happen. The kids had an absolute ball and they are still buzzing about it. What I really loved hearing the most was everyone took so many learnings about how to stay safe and protect themselves and loved ones on the farm, because this is what the day was all about. If you would like to see more photos from the day head over to Facebook and search up 'Waimate Deputy Mayors Desk' there are over 300 photos.



Year 8 Leadership Conference at Iona

Last week our year 8's participated in the Waitaki Rural Schools Leadership Conference. This is a leadership programme we have in place for our Year 8 Students. This year's conference was called **"Always A Leader"**. The students were involved in sessions such as "Who am I", "Leaders and Integrity" "Working In a Team" and many more. The main goal of the conference was to give the Year 8 students experience with working together, the opportunity to listen to guest speakers who gave advice as to what leadership looks like and a chance to meet other country kids that may be heading to high school with them. They also had musician Steve Harrop come in and write and create an amazing song with the kids. In the pictures below we have attached the lyrics. We had the high schools come in and talk to the students about what to expect next year. It was amazing to see just how many of our country kids go on to become leaders of their high schools. With our very own Anna and Molly Mansfield being head girl and head of house at Waitaki girls.

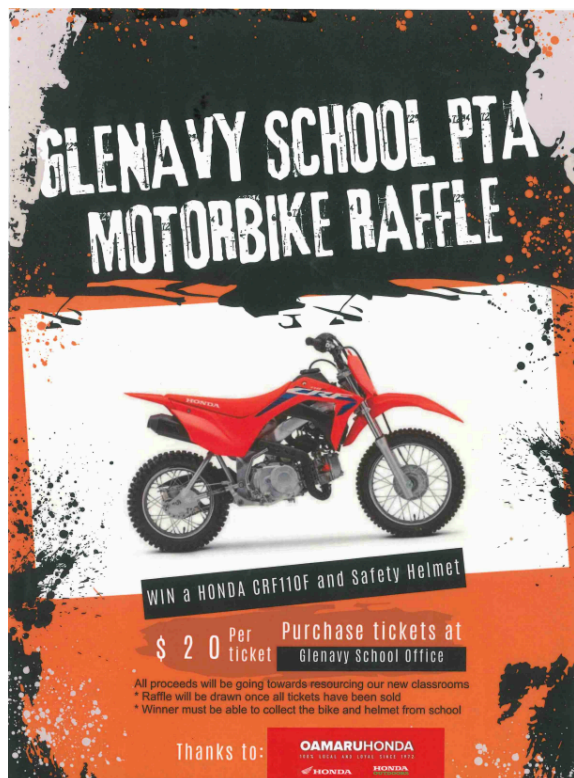


Teachers Only Day and King's Birthday

Next week the School will be closed on Monday and Tuesday. Monday the 3rd is King's Birthday and On the 4th of June our school will be closed for a Teacher Only Day. Glenavy School staff will be at Weston School alongside other North Otago Schools upskilling and doing some professional development that we can then bring back and put into practice in our classrooms. So there will be no members of staff on site.

PTA Motorbike raffle

Make sure you get into the draw to win a Honda CRF110F. Tickets are \$20 and are available at the school office.



The CRF110F features a Keihin electronic fuel-injection system that's tuned for linear power delivery and precise throttle response. The four-speed, clutchless transmission makes for easy take-offs and shifting that quickly become comfortable for every rider. 97mm of rear-suspension travel and an extra seat-foam thickness (without increasing overall seat height) mean comfort whether sitting or standing.

In true Honda style, the CRF110F delivers legendary build quality and reliability, so the bike dependably fires up every time the starter button is pressed and does not stop until the tank runs dry—and when that moment is looming, the FI system provides a low-fuel warning light.

A big benefit for the young rider's "factory mechanic" is that the fuel-injection system eliminates the possibility of carburettor jets clogging with fuel residue if the motorcycle sits for an extended period—and reduced maintenance means more family time on the trail or track.

I hope you have a wonderful long weekend.

Regards
Steve Ross

Upcoming Events - Term 2
Week 6 - Term 2
Monday 3rd June

- No School - King's Birthday Holiday


Tuesday 4th of June

- No School - Teacher Only Day

Wednesday 5th of June

- Wheelie Day
- PTA Meeting 2.15pm

Thursday 6th of June

- Home Technology Challenge Testing 1.30-3pm

Friday 7th of June

- National Young Leaders Day in Dunedin - Yr 8

Week 7- Term 2
Monday 10th June

- Whole School Technology Day - Seniors @ Waitaki Valley Juniors @ Duntroon
- Subway Orders In


Saturday 15th June

- PTA Quiz Night 7pm - Glenavy Hall



★★★★ **Glenavy School Value Awards** ★★★★★

Principal's Award - **Harry Joyce** - **Respect** - For personally going around and thanking all the volunteers again that help run the farm day after the event had finished. What a superstar.

Kororā - **Audrey Bitabit** - **Self Management** - For amazing reading and such a wonderful understanding of all you read.

Piwakawaka - **Tanvir Kaur** - **Self Management** - You have been putting in some amazing effort into your reading and writing this term and have improved so much! Well done!

Ruru - **Vaea Taueli** - **Self Management** - You have put in a lot of effort to put together a great speech and to remember it off by heart. You should be very proud. Well done Vaea!

Tūi - **Nandini Nimbalkar** - **Integrity** - You are always doing the right thing and you use kind words towards your friends. You are an awesome role model.

Kea - **Anika Borile** - **Self Management** - This young lady is an author in the making. Her passion for writing is wonderful to see. Watch out for her name.....

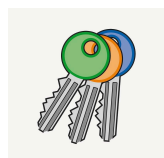
Mr Dowling - **Olivia McEwen** - Olivia is always polite and hardworking but this award is for her scoring 18 points at miniball a great effort in a great team effort.

Hockey Results

This week Glenavy Boomerangs played Weston Tigers and won 2-1. Our player of the day went to **Bayleigh Lewis**

Glenavy Greensticks played Fenwick Flames and lost 5-1. Our player of the day went to **Sonny Chellew**

And the Glenavy Bluesticks played Fenwick Fireflies and won 4-1 Our player of the day went to **Fletcher McNaughton (Five Forks)**.



Pool Keys Reminder

Please return your pool keys to the School Office ASAP.

School Uniforms

Uniforms are now bought and ordered from [NZ Uniforms](#)

Go online and order these directly from the shop.
They will be delivered to your house.

If you want to try one on for size we have one of each size at school in the office.





Facts you should know about Waste to Energy incineration

BURNING WASTE

24 HOURS A DAY

7 DAYS A WEEK

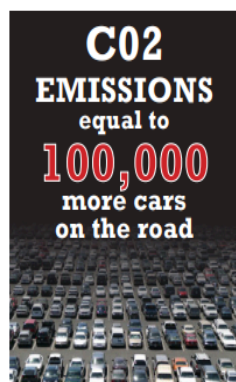
365 DAYS A YEAR

FOR 35 YEARS

**365,000 TONNES
WASTE PER YEAR**

**3.5 MILLION
TONNES OF TOXIC
ASH OVER 35 YEARS**

**>1.5M TONNES OF
CLIMATE ALTERING
CO2 OVER 35 YEARS**



- South Island Resource Recovery Ltd (SIRRL) have lodged a resource consent application to build a rubbish incinerator near Glenavy/Waimate to burn 365,000 tonnes of the South Island's waste each year, including toxic plastics.
- If consented, the incinerator will emit dangerous airborne pollutants, 24 hours a day, 365 days a year, for 35 years. These toxic emissions include smoke particulates (PM10, PM2.5) and ultra-fine particulates (PM0.1). These can penetrate our lungs, move into our bloodstream, brain and organs causing stroke, Parkinsons, Alzheimers and cancers.
- The incinerator will create **100,000 tonnes per year** of contaminated waste ash. The untreated 'bottom ash' will be sent to landfill. The company refuses to say where.
- The incinerator will be built on a floodplain. The company wants to store in excess of 45,000 tonnes of baled waste and bulk-store hazardous substances, including 100,000 litres of diesel fuel onsite.
- The company intends to collect waste from all over the South Island and truck it hundreds of kilometres away from the waste source to the incinerator, burn it, and then truck the residue ash to landfill. This will amount to a huge number of extra truck and trailer movements, 7 days a week on the dangerous SH1 route, choking town throughfares.
- Dioxins from the stack emissions accumulate in the soil, pollute our water and are absorbed by plants, animals, birds and insects. Foraging livestock take up the toxins, passing them onto humans through consumption of milk, eggs, meat; the harm to human health around waste incinerators is intergenerational.
- The proposed incinerator site is 2.5kms from Glenavy School and township in line of prevailing NE winds. To the north is Oceania, a dairy factory and international exporter.
- Incinerators should never be built on rural land. Local GPs, Waimate Doctors have condemned this incinerator, calling it a 'Waste to Poisons Plant'.

you can help!

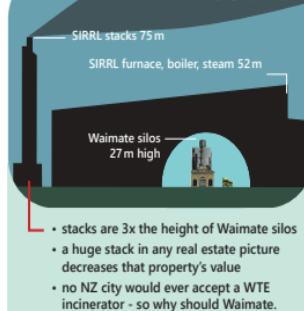
PLEASE SIGN THIS **ONLINE PETITION** AGAINST THE PROPOSAL <https://www.change.org/p/opposing-a-proposed-incinerator-by-south-island-resource-recovery-ltd>

Contact: whywastewaimate@gmail.com

fast facts

SIRRL's WtE incinerator

SCALE & LANDSCAPE



WATER TAKE

- 2,500 m³ per day of groundwater extracted
- equivalent to one olympic swimming pool

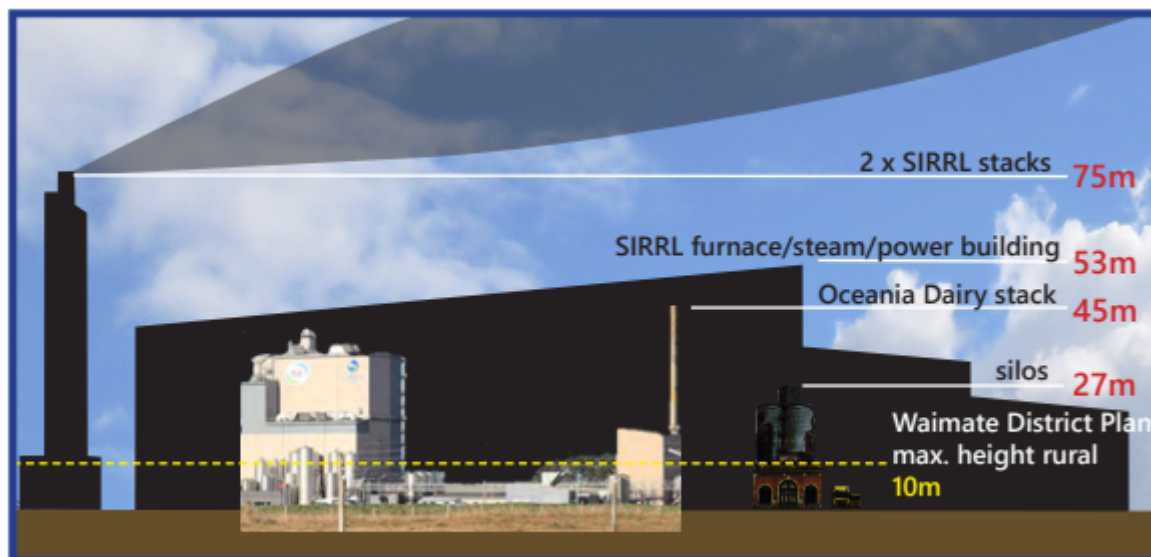
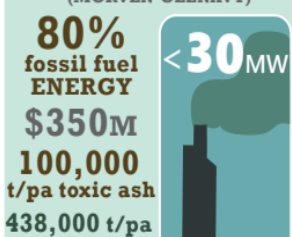
FIRE RISK

- 100,000 LITRES OF DIESEL FUEL ONSITE
- STORING 45,000 TONNES OF BALED WASTE—that's enough to fill a warehouse the size of Timaru Bunnings twice over.

WAIPIPI WINDFARM (SOUTH TARANAKI)



SIRRL INCINERATOR (MORVEN-GLENVY)



Comparative heights Oceania Dairy and Waimate silos to SIRRL incinerator



Sign our PETITION

Why Waste Waimate Inc needs **YOU**

Do you oppose SIRRL's waste-to-energy incinerator in Morven-Glenavy?

365,000 tonnes per year of waste from Christchurch and Dunedin will be trucked to Waimate to burn. The chosen process will pollute the atmosphere, our Waimate air, waterways, land and agricultural products for generations. It poses real risk to human health. The science is on our side: this incinerator is a dangerous, outdated technology and approach to managing waste.

Why do we need another petition?

Already signed one? Thank you! We already have well over 2000 signatures but we need much more community support. Please sign and share this petition/s to show Waimate District Council and Environment Canterbury you don't want Project Kea in our district and request them to submit against it in the Environment Court.

As my elected representatives I want you to oppose the planned incinerator plant proposed by South Island Resource Recovery Ltd's Project Kea, in Waimate District.

First name	Last name	Email
First name	Last name	Email
First name	Last name	Email
First name	Last name	Email
First name	Last name	Email

How to return your petition form to Why Waste Waimate Inc.

Fill in as many lines as you can, cut out this page. Drop it off to either:

Waimate District Council Library - Event Centre, Paul St, Waimate
 Waimate Art Society/Gallery, cnr High St and Shearman St, Waimate
 Mandy Tangney's Shop, 129 Queen Street, Waimate

Or Scan or photograph it and email to whywastewaimate@gmail.com

Or complete an online petition:

<https://community.greenpeace.org.nz/petitions/opppose-the-waste-to-energy-incinerator-in-the-waimate-district>
<https://www.change.org/p/opposing-a-proposed-incinerator-by-south-island-resource-recovery-ltd>

Glenavy School

QUIZ NIGHT

15th June Glenavy Hall

Doors open 6.30pm Quiz Starts at 7pm

Supper/Cash Bar/Live Band/Prizes/Auction

Tickets \$20 per person, teams of 6

Courtesy Van available to get you home

Limited tables so book yours today by contacting
the school office or
emailing glenavyschoolpta@gmail.com

PLEASE SUPPORT THOSE WHO SUPPORT US



DAIRY HYGIENE, AGRI CHEMICAL/SEED, CLEANING MATERIALS, STOCK FEED AND MUCH MORE.

Waimate Store, 62-66 Queen Street,
Waimate. p. 03 6891230
Oamaru Store, 2 Industrial Place,
Oamaru North. p. 03 4331240

FOR ALL YOUR ELECTRICAL NEEDS

- IRRIGATION
- DAIRY SHED & PLANT
- DOMESTIC SERVICES
- COMMERCIAL SERVICES
- APPLIANCE REPAIRS
- SECURITY & CCTV
- HEAT PUMPS & VENTILATION



PLUNKET ELECTRICAL

ON CALL 24/7 - 0800 434 840

STILL'S FARM MACHINERY

Proprietors: Kerry & Raelyn Still

- Hydraulic Hose Repair Service
- All Makes & Models of Machinery
- Tractor & Farm Machinery Repairs in Workshop or on Farm

SH 1, Pukeuri Junction, Oamaru 9436
Ph. 03 431 3760 | Cell. 027 433 9080 | Fax. 03 431 3764
AHL 03 434 9443 | www.stillsfarmmachinery.co.nz

Veterinary Centre

19 Redcliff Road, Glenavy
Phone/Fax: 03 689 8118

Hours: Mon-Fri 8.30am - 4pm

"The leading light in animal health"

GLENNAVY

After Hours
Emergency number **0800 838 111**
by the Big Blue Cross

MAINLAND SPREADING

Call (03) 439 5501
or Kylie 027 484 7646
office@mainlandgs.co.nz

Call on the friendly,
helpful staff for all your
farming supplies.

NORTH OTAGO
PASTORAL
SERVICES

GRAIN & SEED - CHEMICALS
ANIMAL HEALTH - STOCK FOOD
FENCING - DAIRY REQUIREMENTS

Kelvin Mansfield 027 544 1171
Gerard Dawson AH 437 0725
Matthew Paton 027 443 4701
Craig Dineen 021 109 1087
Nick Walters 027 224 4057

3 USK STREET OAMARU | WWW.NOPS.CO.NZ | 434 7766

Proud Sponsors of Glenavy School



For all your
Dairy Hygiene needs:

Jason Birchall

021 494 690

jason.birchall@ecolab.com

ECOLAB

Local knowledge that counts

Civil - Commercial - Rural - Domestic



Phone: (03) 689 7881

e-mail: enquiry@rooneygroup.co.nz

Hope & Associates Legal

Barristers & Solicitors

120 Queen St, Waimate (03) 689 6331

76 Thames St, Oamaru (03) 434 9930

Mon to Wed 8.30am to 3pm & Thurs & Fri 8.30am to 5pm

Contact us today for all legal assistance.

SJ Allen Ltd

100% LOCALLY OWNED AND OPERATED

- Farm Effluent Ponds & Sump Cleaning
- Silo Cleaning
- Septic & Holding Tank Cleaning
- Water Blasting of Cow Sheds & Drains
- Effluent Stirrer Available
- High Pressure Water Blasting



0800 155 669

Taking care of your business!

Farmlands



- AGRICULTURE WORK
- DRILLING
- SILAGE CHOPPING
- BALING
- CARTAGE
- SALES
- WOODCHIP

Jamie Barlow
Operations
Manager / Sales
027 200 55 72

Brad Cunningham
Ag Manager
207 200 55 71

Grant Kinsman
0274 344 819

Account Enquiries:
office@kinsmancontracting.co.nz
www.kinsmancontracting.co.nz

Ph: 03 615 5084

kinsman contracting ltd

Kawasaki

can-am



COLIN CLYNE MOTORCYCLES

P. 03 437 0559

419 THAMES HWY, OAMARU

WWW.COLINCLYNEMOTORCYCLES.CO.NZ



HOME OF THE GOLDEN FRIES

- Think Local ... Buy Local
- Gluten Free • Carbon Zero
- 100% locally owned and operated • Using 100% locally-grown ingredients

Visit our Factory Shop at:
5 Makikihi Beach Road

www.makikihifries.co.nz



WAIMATE

45 Queen Street, Waimate

Ph: (03) 689 7100 E: ruralmeats@xtra.co.nz

- makers of quality small goods
- mobile abattoir service and wild game processors

MAUNGATI LIME CO LTD

Suppliers of High Quality Lime

- Track Rock • Lime Chip • Aggregate

Proud to Support Glenavy School

Alistair Johnson 0274 338 735

Sean Johnson 027 653 1722

Holme Station, RD2 Timaru. Ph: 686 4859