



# Glenavy SCHOOL

RD 10, Glenavy, Waimate • Phone: 03 689 3856 • Fax: 03 689 2745

Email: [office@glenavy.school.nz](mailto:office@glenavy.school.nz)



## Newsletter



[www.glenavy.school.nz](http://www.glenavy.school.nz)

Principal: Kate Mansfield [principal@glenavy.school.nz](mailto:principal@glenavy.school.nz)

Office: [office@glenavy.school.nz](mailto:office@glenavy.school.nz)

Telephone: 036893856

Website: [www.glenavy.school.nz](http://www.glenavy.school.nz)

FACEBOOK- Glenavy School NZ

**SCHOOL ACCOUNT NUMBER NZ 060941-0494989-00**

### Bus Drivers

Magic Bus - Al Stewart

Ring or text before 7:30am 021 0886 3249

Flames Bus - Barry Duff

Ring or text before 7:30am 027 238 6241

White Minivan - Graham Brickland ring or text  
before 7:30 am 021 039 9655 or 03 689 6415

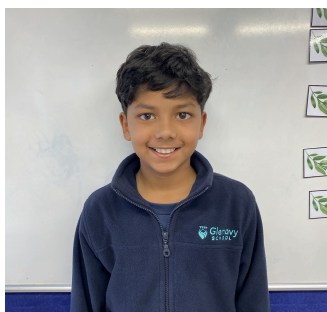
Dear Parents,

**Kia ora koutou**

A nice short week here at Glenavy School. I hope everyone had a lovely long weekend although I know a lot of families were doing the dreaded pack up and moving house. We have unfortunately had to say goodbye to some wonderful Glenavy Families who have moved farms or changed jobs. We wish them all the best. But on the flipside we have also welcomed new families and students into Glenavy School and we are so happy to have you. We have had 4 new students start this week, Gabriel Machado, Mayon Nissankage, Thinuli Nissankage and Elizabeth Hamilton. We hope you have all enjoyed your first few days at Glenavy School.



Gabriel Machado  
Yr 5 Ruru



Mayon Nissankage  
Yr 5 Rur



Thinuli Nissankage  
Yr 2 Piwakawaka



Elizabeth Hamilton  
Yr 1 Korora

### **Speech Competitions**

Congratulations to all of the wonderful Glenavy students that competed in our Glenavy School Speech Competition. Everyone was absolutely blown away by the quality of speeches and bravery of every student to get up and give it a go. Ka mau te pai.

A big thankyou also needs to go out to our amazing judges that had the hardest job trying to select the winners. Rebecca Ryan, Lynn McCulloch, Joan Marcos and Sharyn Cain we cannot thank you enough.

Congratulations to the following children who qualified for the Waitaki Rural Speech Competition held on Thursday 20th of June at 5pm in the WGHS auditorium.

**Olivia McEwan** Year 7-8

**Czrylle Dimaya** Year 5-6

**Lexis Chellew** Year 3-4

**Eva McCulloch** Year 1-2



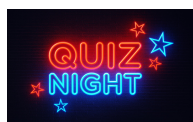


### Waitaki Rural Schools BP Technology Challenge



Waitaki Rural Technology Challenge will be held on Monday 10th of June at Waitaki Valley School in Kurow and Duntroon School. This year we are doing it slightly differently with the seniors (yrs 4-8) heading to Kurow and juniors (yrs 0-3) heading to Duntroon. This is a whole school event and we travel by bus to Kurow. If any families have any spare newspapers laying around that we could use that would be greatly appreciated.

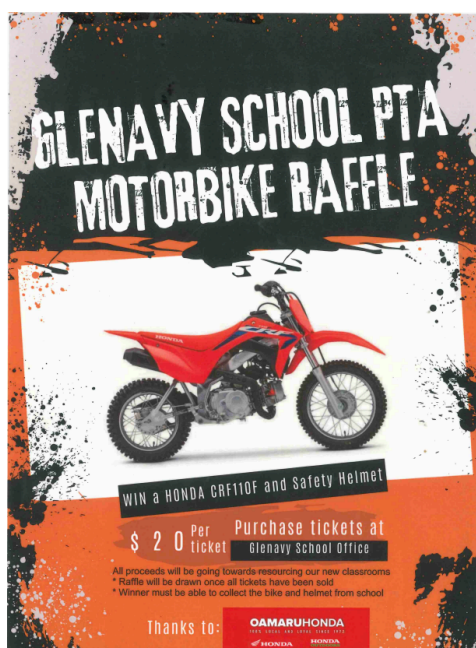
### Quiz Night



Remember that we are holding our Quiz night at the Glenavy Hall on Saturday 15th June. Come along and test your general knowledge. We all know you have been practising watching the Chase and thinking that you know all of the answers. . We have been promised that the questions are not as hard as last years which is great for us teachers as we didn't do very well. If you are interested, get your teams together and get your tickets at the school's office.

### PTA Motorbike raffle

Make sure you get into the draw to win a **Honda CRF110F**. Tickets are \$20 and are available at the school office.



*The CRF110F features a Keihin electronic fuel-injection system that's tuned for linear power delivery and precise throttle response. The four-speed, clutchless transmission makes for easy take-offs and shifting that quickly become comfortable for every rider. 97mm of rear-suspension travel and an extra seat-foam thickness (without increasing overall seat height) mean comfort whether sitting or standing.*

*In true Honda style, the CRF110F delivers legendary build quality and reliability, so the bike dependably fires up every time the starter button is pressed and does not stop until the tank runs dry—and when that moment is looming, the FI system provides a low-fuel warning light.*

*A big benefit for the young rider's "factory mechanic" is that the fuel-injection system eliminates the possibility of carburettor jets clogging with fuel residue if the motorcycle sits for an extended period—and reduced maintenance means more family time on the trail or track.*

I hope you have a wonderful long weekend.

Regards  
**Steve Ross**

**Upcoming Events - Term 2**
**Week 7 - Term 2**
**Monday 10th June**

- Whole School Technology Day - Seniors @ Waitaki Valley Juniors @ Duntroon



- Subway Orders In

**Saturday 15th June**

- PTA Quiz Night 7pm - Glenavy Hall


**Week 8- Term 2**
**Tuesday 18th June**

- Technology Yr 7 & 8 in Oamaru

**Wednesday 19th June**

- BOT Meeting 6.30pm

**Thursday 20th June**

- Waitaki Rural Schools Speech Competitions



★★★★ **Glenavy School Value Awards** ★★★★★

**Principal's Award** - **Glejan Marcos** - **Community Support** - For showing outstanding Glenavy School Values each and every week at Mini Ball by supporting your teammates.

**Kororā** - **Elizabeth Hamilton** - **Self Management** - this is your first week but it feels like you have been here all year asking great questions and being enthusiastic in your learning well done and welcome.

**Piwakawaka** - **Thinuli Nissankage** - **Self Management** - You have made an amazing start in Piwakawaka and have fitted right in, thank you for teaching our class new actions to a song!

**Ruru** - **Kattie Baralongo** - **Community Support** - You are an outstanding role model in our class, you are supportive, you help out your classmates and you ensure that all your work is done!

**Tūi** - **Georgina Eseo** - **Self Management** - You are always prepared for class and you ensure to do your best at all times.

**Kea** - **Sebastian Lefranco** - **Community Support** - For writing speeches and stories that entertain.

**Karearea** - **Zach Fong** - **Community Support** - For being an amazing role model and super supportive with all the children in Piwakawaka.

**Mr Dowling** - **Johara Rivera** - **Self Management** - Johara has been working so hard in class and thinking outside of the box she has taken on the technology challenge with amazing energy.

**Maths Award** - **Eva McCulloch** - For calculating how many marbles your boat could hold before getting to school.

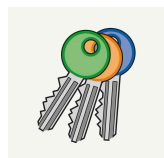


## **Hockey Results**

This week Glenavy Boomerangs played Weston Sharks and it was a draw 3-3. Our player of the day went to **Winter Dial**.

Glenavy Greensticks played Papakaio Panthers and won 2-0. Our player of the day went to **Adahlia Tohiariki**.

And the Glenavy Bluesticks played Papakaio Pandas and won 5-1. Our player of the day went to **Henry McCone (Five Forks)**.



## **Pool Keys Reminder**

Please return your pool keys to the School Office ASAP.


## **School Uniforms**

Uniforms are now bought and ordered from [NZ Uniforms](#)

Go online and order these directly from the shop. They will be delivered to your house.

If you want to try one on for size we have one of each size at school in the office.



The poster has a black background with a dense pattern of colorful confetti and streamers in shades of yellow, blue, pink, and green. Several lightbulbs are depicted: some are glowing yellow, while others are inside pink speech bubble-like shapes. The text is arranged in horizontal bars of various colors.

**Glenavy School**

# QUIZ NIGHT

**15th June Glenavy Hall**

Doors open 6.30pm Quiz Starts at 7pm

**Supper/Cash Bar/Live Band/Prizes/Auction**

**Tickets \$20 per person, teams of 6**

**Courtesy Van available to get you home**

Limited tables so book yours today by contacting  
the school office or  
emailing [glenavyschoolpta@gmail.com](mailto:glenavyschoolpta@gmail.com)



### PLEASE SUPPORT THOSE WHO SUPPORT US



#### DAIRY HYGIENE, AGRI CHEMICAL/SEED, CLEANING MATERIALS, STOCK FEED AND MUCH MORE.

Waimate Store, 62-66 Queen Street,  
Waimate. p. 03 6891230  
Oamaru Store, 2 Industrial Place,  
Oamaru North. p. 03 4331240

#### FOR ALL YOUR ELECTRICAL NEEDS

- IRRIGATION
- DAIRY SHED & PLANT
- DOMESTIC SERVICES
- COMMERCIAL SERVICES
- APPLIANCE REPAIRS
- SECURITY & CCTV
- HEAT PUMPS & VENTILATION



#### PLUNKET ELECTRICAL

ON CALL 24/7 - 0800 434 840

#### STILL'S FARM MACHINERY

Proprietors: Kerry & Raelyn Still

- Hydraulic Hose Repair Service
- All Makes & Models of Machinery
- Tractor & Farm Machinery Repairs in Workshop or on Farm

SH 1, Pukeuri Junction, Oamaru 9436  
Ph. 03 431 3760 | Cell. 027 433 9030 | Fax. 03 431 3764  
AHL 03 434 9443 | [www.stillsfarmmachinery.co.nz](http://www.stillsfarmmachinery.co.nz)

#### Veterinary Centre

19 Redcliff Road, Glenavy  
Phone/Fax: 03 689 8118

Hours: Mon-Fri 8.30am - 4pm

"The leading light in animal health"

GLENNAVY

After Hours  
Emergency number **0800 838 111**  
by the Big Blue Cross

#### MAINLAND SPREADING

Call (03) 439 5501  
or Kylie 027 484 7646  
[office@mainlandgs.co.nz](mailto:office@mainlandgs.co.nz)

Call on the friendly,  
helpful staff for all your  
farming supplies.

NORTH OTAGO  
PASTORAL  
SERVICES

GRAIN & SEED - CHEMICALS  
ANIMAL HEALTH - STOCK FOOD  
FENCING - DAIRY REQUIREMENTS

Kelvin Mansfield 027 544 1171  
Gerard Dawson AH 437 0725  
Matthew Paton 027 443 4701  
Craig Dineen 021 109 1087  
Nick Walters 027 224 4057

3 USK STREET OAMARU | [WWW.NOPS.CO.NZ](http://WWW.NOPS.CO.NZ) | 434 7766

Proud Sponsors of Glenavy School



For all your  
Dairy Hygiene needs:

Jason Birchall

021 494 690

[jason.birchall@ecolab.com](mailto:jason.birchall@ecolab.com)

ECOLAB

Local knowledge that counts

Civil - Commercial - Rural - Domestic



Phone: (03) 689 7881

e-mail: [enquiry@rooneygroup.co.nz](mailto:enquiry@rooneygroup.co.nz)

#### Hope & Associates Legal

Barristers & Solicitors

120 Queen St, Waimate (03) 689 6331

76 Thames St, Oamaru (03) 434 9930

Mon to Wed 8.30am to 3pm & Thurs & Fri 8.30am to 5pm

Contact us today for all legal assistance.

#### SJ Allen Ltd

100% LOCALLY OWNED AND OPERATED

- Farm Effluent Ponds & Sump Cleaning
- Silo Cleaning
- Septic & Holding Tank Cleaning
- Water Blasting of Cow Sheds & Drains
- Effluent Stirrer Available
- High Pressure Water Blasting

**0800 155 669**

Taking care of your business!

Farmlands



- AGRICULTURE WORK
- DRILLING
- SILAGE CHOPPING
- BALING
- CARTAGE
- SALES
- WOODCHIP

Jamie Barlow  
Operations  
Manager / Sales  
027 200 55 72

Brad Cunningham  
Ag Manager  
207 200 55 71

Grant Kinsman  
0274 344 819

Account Enquiries:  
[office@kinsmancontracting.co.nz](mailto:office@kinsmancontracting.co.nz)  
[www.kinsmancontracting.co.nz](http://www.kinsmancontracting.co.nz)

Ph: 03 615 5084

kinsmancontracting Ltd

Kawasaki

can-am



#### COLIN CLYNE MOTORCYCLES

P. 03 437 0559

419 THAMES HWY, OAMARU

[WWW.COLINCLYNEMOTORCYCLES.CO.NZ](http://WWW.COLINCLYNEMOTORCYCLES.CO.NZ)



#### HOME OF THE GOLDEN FRIES

- Think Local ... Buy Local
- Gluten Free • Carbon Zero
- 100% locally owned and operated • Using 100% locally-grown ingredients

Visit our Factory Shop at:  
5 Makikihi Beach Road

[www.makikihifries.co.nz](http://www.makikihifries.co.nz)



WAIMATE

45 Queen Street, Waimate

Ph: (03) 689 7100 E: [ruralmeats@xtra.co.nz](mailto:ruralmeats@xtra.co.nz)

- makers of quality small goods
- mobile abattoir service and wild game processors

#### MAUNGATI LIME CO LTD

Suppliers of High Quality Lime

- Track Rock • Lime Chip • Aggregate

Proud to Support Glenavy School

Alistair Johnson 0274 338 735

Sean Johnson 027 653 1722

Holme Station, RD2 Timaru. Ph: 686 4859