



Glenavy SCHOOL

RD 10, Glenavy, Waimate • Phone: 03 689 3856 • Fax: 03 689 2745

Email: office@glenavy.school.nz



Newsletter



www.glenavy.school.nz

Principal: Kate Mansfield principal@glenavy.school.nz

Office: office@glenavy.school.nz

Telephone: 036893856

Website: www.glenavy.school.nz

FACEBOOK- Glenavy School NZ

SCHOOL ACCOUNT NUMBER NZ 060941-0494989-00

Bus Drivers

Magic Bus - Al Stewart

Ring or text before 7:30am 021 0886 3249

Flames Bus - Barry Duff

Ring or text before 7:30am 027 238 6241

White Minivan - Graham Brickland ring or text
before 7:30 am 021 039 9655 or 03 689 6415

Dear Parents,

Well it has definitely been a wet and miserable old week this week. The kids have done so well at school having been cooped up inside most of the day. Just a wee reminder that there is no school tomorrow with it being a public holiday for Matariki. So I hope everyone has a great long weekend and everyone is back fighting fit for the last week before the school holidays start.

Matariki

Matariki is the star cluster most commonly known across the world as Pleiades. This Cluster is part of a larger constellation of stars called Taurus. It is one of the earliest recorded groups of stars in human history, with a record that dates back some 17,000 years.



Around the world there are many names for this group of stars.

In Japan, it is called Subaru, which means 'to come together'. In China it is Mao, the hairy head of the white Tiger, in India it is known as Krittika. In Greek mythology they are known as the seven sisters, and in Norse mythology the Vikings knew them as Freyja's hens.

For many cultures, these stars are connected to celebrate, planting, harvesting, weather, and life. For Māori, the rising of the Matariki signals te Mātahi o te Tau, the Māori New Year. The appearance of Matariki in the morning sky is the sign for people to gather, to honour the dead, celebrate the present, and plan for the future.

Welcome to our wonderful new students this week.

Logan Jenkins
Kea Yr 6

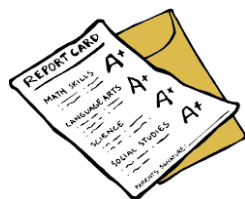


Chelsea Jenkins
Piwakawaka Yr 3



Ski Trip

For those students and parents that have signed up for the first car ski trip I have been advised by Roundhill that they will be open and ready to go next Friday. This is awesome news. I have had a look at the long range forecast and the weather is looking good, so it should be a great day on the mountain. Please next week keep an eye on Skool loops for updates about the day as I will stay in constant contact with the Ski field. Remember that we have boxes of ski gear at school you can borrow. Please go and see Rebecca in the office and she will help you find some for your children. We have jackets, ski pants, ski gloves and some ski goggles.

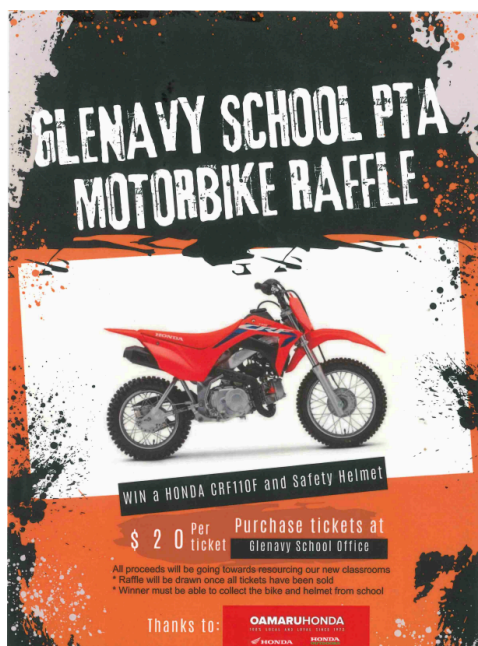


School Reports

These will go out on Thursday next week with your child. If you are going to be away on Thursday please inform the office and they can be picked up earlier that week or posted. These reports are where your child is working compared to the New Zealand Curriculum Levels. Please remember that every child learns differently and at a different pace. So reaching the NZ Curriculum for their age is always going to be different with some reaching it faster than others. There is no magic, no stop formula for learning. We are always happy to see children making progress. Please make a meeting time with your child's teacher if you have any questions relating to your child's report.

PTA Motorbike raffle

Make sure you get into the draw to win a **Honda CRF110F**. Tickets are **\$20** and are available at the school office.



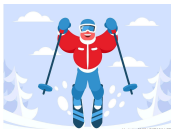

The CRF110F features a Keihin electronic fuel-injection system that's tuned for linear power delivery and precise throttle response. The four-speed, clutchless transmission makes for easy take-offs and shifting that quickly become comfortable for every rider. 97mm of rear-suspension travel and an extra seat-foam thickness (without increasing overall seat height) mean comfort whether sitting or standing.

In true Honda style, the CRF110F delivers legendary build quality and reliability, so the bike dependably fires up every time the starter button is pressed and does not stop until the tank runs dry—and when that moment is looming, the FI system provides a low-fuel warning light.

A big benefit for the young rider's "factory mechanic" is that the fuel-injection system eliminates the possibility of carburettor jets clogging with fuel residue if the motorcycle sits for an extended period—and reduced maintenance means more family time on the trail or track.

Have a wonderful long weekend
 Regards
Steve Ross

Upcoming Events - Term 2

<u>Week 10 - Term 2</u>	<u>Week 1 - Term 3</u>
<u>Wednesday 3rd July</u> <ul style="list-style-type: none"> PTA Meeting <u>Thursday 4th July</u> <ul style="list-style-type: none"> School Reports Sent Home <u>Friday 5th July</u> <ul style="list-style-type: none"> Ski Trip Cars Only Last Day of Term 	<u>Monday 22nd July</u> <ul style="list-style-type: none"> First Day of the Term <u>Friday 26th July</u> <ul style="list-style-type: none"> NZ Playhouse Theatre 9:15am 

★★★★ **Glenavy School Value Awards** ★★★★★

Principal's Award - **Dale Morgan** - **Self Management** - An incredible week practising jump jam, you have been a star and representing the school with pride. You are a superstar.

Kororā - **Sophie Dickey** - **Community Support** - Thank you for looking out for everyone in Kororā Class, ensuring we are all happy.

Piwakawaka - **Ollie Gibbons** - **Self Management** - You have been focussing really hard on making your work more presentable! Well Done!

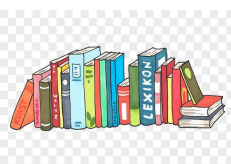
Ruru - **Lugmaan Nijamdeen** - **Self Management** - You are pushing yourself more and more in class, giving everything 100% and not giving up when it gets challenging, Well Done!

Tūi - **Jacques Quilton** - **Self Management** - You have been working hard in class, giving your best in everything you do. Keep it up!

Kea - **Adahlia Tohiariki** - **Integrity** - For being outstanding in all aspects of school life. Being an excellent role model and putting 100% effort into everything she does.

Karearea - **Umar Nijamdeen** - **Integrity** - A kind and friendly member of the class who is constantly and consistently on task.

Maths Award - **Kianre Perez** and **Czyrille Dimaya** - For being the first to count 'The Strawberries.' correctly using arrays and addition.



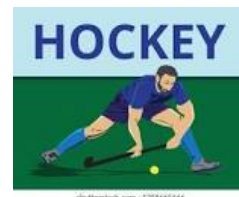
Library Day

Please make sure you send all your books back next week for the end of term. Thank you!

Hockey Results

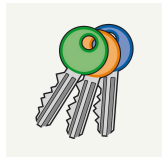
This week Glenavy Boomerangs played Five Forks Red and lost 10-0.

All Junior Hockey was cancelled due to the weather.



Pool Keys Reminder

Please return your pool keys to the School Office ASAP.



School Uniforms

Uniforms are now bought and ordered from [NZ Uniforms](#)

Go online and order these directly from the shop.
They will be delivered to your house.

If you want to try one on for size we have one of
each size at school in the office.



The Interim Moderator Rev Anne Stewart is attending Waihao Church
service June 30th Sunday 10.30am followed by shared lunch

Rev Anne is helping us set up The Waihao Glenavy community Church after
dissolution of WDCV December 2023.

All cordially invited
Rosemary Zwies
0277272130

We are pleased to share the details of our upcoming Open Night at Waitaki Girls' High School, in which we invite new students for 2025 and their parents/caregivers to come along. Details are as follows:

Date: Thursday 1st August 2024

Who: Parents/Caregivers and students

Where: Come to the MK Dunning Hall

Time: 6:00 pm

What will happen: There will be a short presentation, and then you will have an opportunity to have a tour of the school and speak to staff and students.



Waitaki Girls' High School

Inspiring Personal Excellence in Learning and Life

waitakigirlshigh.school.nz 03434 8429

FROM THE CABINET OF KARNOVACH
UNRAVEL THE MYSTERY IN

DRIP



ONE ACT PLAY

STARRING

KATE LOW
LUKE ROBB

PRODUCED BY

BENJAMIN DONALDSON
KATE LOW

Doors open half an hour prior to showing
Cash door sales pending availability

Tickets available on Eventbrite

Waimate, July 6th - Silver Band Hall

Timaru, July 10th-13th - Roncalli College Hall 7:30 pm showings

Head to www.ambiversal.com for more information



NORTH OTAGO HOCKEY

SKILLS HOLIDAY PROGRAMME



Date
9th July 2024



YEARS 5-6 = 10AM - 12PM

YEARS 7-8 = 12PM - 2PM

YEARS 9-13 = 2PM - 4PM

REGISTER



NETWORK WAITAKI RECREATIONAL TURF

For More Information Contact

Jaiden Chhika - jaiden@otagocricket.co.nz



Celebrate MATARIKI in Waimate

Saturday 6 July 2024

Come along and spend a day of learning and fun to mark the beginning of the Māori New Year

Programme

- **5:30am:** community bus leaves from outside Norman Kirk Memorial Swimming Pool for the White Horse (limited seats, booking required)
- **6am:** Haulapu ceremony at the White Horse
- **7:30am:** complimentary breakfast (hot drink, soup, bacon butty and sausages)
- **9am to 2pm:** Waimate Community Market at Seddon Square
- **10am to 2pm:** free workshops at Seddon Square (4 x 1-hour sessions each, booking required)
 - Te Reo Māori** – learn words, phrases and the history of our local hapu and their significance in Waimate
 - Raranga** – learn flax weaving and leave with your own woven piece
- **5:30pm to 8pm:** movie night at Seddon Square, **Frogen Reo Māori**. Bring your seat, blankets and dress warm

Bookings can be made by calling 03 689 0000 or at Waimate District Council's reception at 125 Queen Street, Waimate.

Supported by:



Te Rūnanga o Waihao



Waimate District Council

Table Tennis South Canterbury

2024 Junior Table Tennis Training Program for Beginners (see dates below for term three (Program does not run during school holidays))

At the
Barry Butler Table Tennis Stadium
96 Coonoor Rd, Timaru

Table Tennis South Canterbury will be commencing its junior training program for beginners aged between 8 to 13 years of age on Wednesdays from 5.30pm to 6.30pm commencing on Wednesday 24th July 2024.

Fun Fast Goal Orientated

Dates: Term 3, 10 weeks. Wednesday group starts 24th July to 25th September.
Time: 5.30pm – 6.30pm.

Fees: Term 3, \$50.00 per player. Payable at the beginning of the program on 24th July.

Head Coach: Grant Wilson. (Table Tennis South Canterbury Development Officer).

Equipment required: Sports shoes, Bring your Table Tennis bat if you have one. Stadium bats are available.

Venue: Barry Butler Table Tennis Stadium, 96 Coonoor Rd, Timaru
More Info: Contact Grant Wilson. grant.wilson@outlook.co.nz
Contact phone number: 0210432724

Email Enrolment Form

Enrolment Form for Table Tennis South Canterbury Junior Table Tennis Training Program for Beginners

Participants Name: _____ Age: _____ Date of Birth: _____

Parent/Guardian Name: _____

Home Phone: _____ Cell Phone: _____

Email: _____

Fees: Term Three, \$50.00 per player. Payable at the beginning of the program on 24th July for Wednesday group. Please scan and email to: grant.wilson@outlook.co.nz



**Glenavy Volunteer Fire Brigade
50th Anniversary Celebration**

**Open day at Glenavy Fire Station
29th June 2024 11AM-3PM**

Find us on facebook  **For more info**

PLEASE SUPPORT THOSE WHO SUPPORT US



DAIRY HYGIENE, AGRI CHEMICAL/SEED, CLEANING MATERIALS, STOCK FEED AND MUCH MORE.

Waimate Store, 62-66 Queen Street,
Waimate. p. 03 6891230

Oamaru Store, 2 Industrial Place,
Oamaru North. p. 03 4331240

FOR ALL YOUR ELECTRICAL NEEDS

- IRRIGATION
- DAIRY SHED & PLANT
- DOMESTIC SERVICES
- COMMERCIAL SERVICES
- APPLIANCE REPAIRS
- SECURITY & CCTV
- HEAT PUMPS & VENTILATION



**PLUNKET
ELECTRICAL**

ON CALL 24/7 - 0800 434 840

STILL'S FARM MACHINERY

Proprietors: Kerry & Raeann Still

• Hydraulic Hose Repair Service

• All Makes & Models of Machinery

• Tractor & Farm Machinery Repairs in Workshop or on Farm

SH 1, Pekari Junction, Oamaru 9436

Ph. 03 431 3760 | Cell. 027 433 8030 | Fax. 03 431 3764

APRIL 03 434 9443 | www.stillsfarmmachinery.co.nz

Veterinary Centre

19 Redcliff Road, Glenavy

Phone/Fax: 03 689 8118

Hours: Mon-Fri 8.30am - 4pm

"The leading light in animal health"

GLENVAY

After Hours
Emergency number

0800 838 111

by the Big Blue Cross

Call on the friendly,
helpful staff for all your
farming supplies.

**NORTH OTAGO
PASTORAL
SERVICES**

GRAIN & SEED - CHEMICALS
ANIMAL HEALTH - STOCK FOOD
FENCING - DAIRY REQUIREMENTS

Kelvin Mansfield 027 544 1171

Gerard Dawson AM 437 0725

Matthew Paton 027 443 4701

Craig Dineen 021 109 1087

Nick Walters 027 224 4057

3 USK STREET OAMARU | WWW.NOPS.CO.NZ | 434 7766

Proud Sponsors of Glenavy School



For all your
Dairy Hygiene needs:

Jason Birchall

021 494 690

jason.birchall@ecolab.com

ECOLAB

MAINLAND SPREADING

Call (03) 439 5501

or Kylie 027 484 7646

office@mainlandgs.co.nz

Local knowledge that counts

Civil - Commercial - Rural - Domestic



Phone: (03) 689 7881

e-mail: enquiry@rooneygroup.co.nz

Hope & Associates Legal

Barristers & Solicitors

120 Queen St, Waimate (03) 689 6331

78 Thames St, Oamaru (03) 434 9930

Mon to Wed 8.30am to 3pm & Thurs & Fri 8.30am to 5pm

Contact us today for all legal assistance.

SJ Allen Ltd

100% LOCALLY OWNED AND OPERATED

• Farm Effluent Ponds & Sump Cleaning

• Silo Cleaning

• Septic & Holding Tank Cleaning

• Water Blasting of Cow Sheds & Drains

• Effluent Stirrer Available

• High Pressure Water Blasting

0800 155 669

Taking care of your business!

Farmlands



- AGRICULTURE WORK
- DRILLING
- SILAGE CHOPPING
- BALING
- CARTAGE
- SALES
- WOODCHIP

Jamie Barlow
Operations
Manager / Sales
027 200 55 72

Brad Cunningham
Ag Manager
207 200 55 71

Grant Kinsman
0274 344 819

Account Enquiries:
office@kinsmancontracting.co.nz

Ph: 03 415 5084

www.kinsmancontracting.co.nz

kinsmancontracting Ltd

Kawasaki can-am

COLIN CLYNE MOTORCYCLES

P. 03 437 0559

419 THAMES HWY, OAMARU

WWW.COLINCLYNEMOTORCYCLES.CO.NZ



HOME OF THE GOLDEN FRIES

Think Local ... Buy Local

• Gluten Free • Carbon Zero

• 100% locally owned and

operated • Using 100%

locally-grown ingredients

Visit our Factory Shop at:

5 Makikihi Beach Road

www.makikihifries.co.nz



45 Queen Street, Waimate

Ph: (03) 689 7100 E: ruralmeats@xtra.co.nz

• makers of quality small goods

• mobile abattoir service and wild game processors

MAUNGATI LIME CO LTD

Suppliers of High Quality Lime

• Track Rock • Lime Chip • Aggregate

Proud to Support Glenavy School

Alistair Johnson 0274 338 735

Sean Johnson 027 653 1722

Holme Station, RD2 Timaru. Ph: 686 4859