



Glenavy SCHOOL

RD 10, Glenavy, Waimate • Phone: 03 689 3856 • Fax: 03 689 2745

Email: office@glenavy.school.nz



Newsletter



www.glenavy.school.nz

Principal: Kate Mansfield principal@glenavy.school.nz

Office: office@glenavy.school.nz

Telephone: 036893856

Website: www.glenavy.school.nz

FACEBOOK- Glenavy School NZ

SCHOOL ACCOUNT NUMBER NZ 060941-0494989-00

Bus Drivers

Magic Bus - Al Stewart

Ring or text before 7:30am 021 0886 3249

Flames Bus - Barry Duff

Ring or text before 7:30am 027 238 6241

White Minivan - Graham Brickland ring or text
before 7:30 am 021 039 9655 or 03 689 6415

Dear Parents,

Well term 2 has come to an end and what an amazing term it has been. It has been a pleasure being able to sit in Kate's big chair this term and the support I have received from our school community has been incredible. Being able to experience first hand what it's like running a school has been a real privilege and it just reinforces what an amazing Principal we have in Kate and we are so lucky to have her.

We also are saying goodbye "of sorts" to two amazing teachers that have come in this term and done such a great job. Jo Mortimer and Gemma Hamilton we cannot thank you enough for all that you have done. Although it is goodbye we do still get to see you both return next term for some relieving work.

I hope everyone has a safe and relaxing holiday and we will see everyone next term.

Reports

They went home yesterday. I loved reading all the positive comments about your children. Please come and see your child's teacher if you have any questions about the reports or if you need to understand the report. Please remember that every child's learning progresses at different rates, there is never one way of learning that fits all children and sometimes learning just takes a wee bit longer.



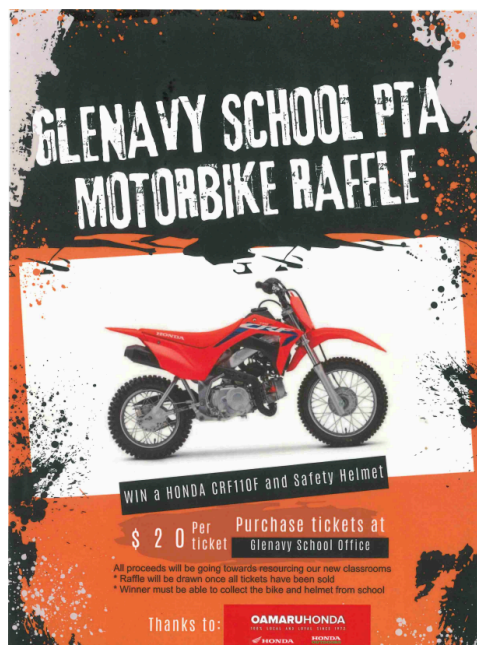
School Production

Lock it in we will be having our school production of Mission Implausible next term on the **12th of September**. This year we have changed it up and because our school has grown we will be performing at the Regent theatre in Waimate.



PTA Motorbike raffle

Make sure you get into the draw to win a **Honda CRF110F**. Tickets are \$20 and are available at the school office.



The CRF110F features a Keihin electronic fuel-injection system that's tuned for linear power delivery and precise throttle response. The four-speed, clutchless transmission makes for easy take-offs and shifting that quickly become comfortable for every rider. 97mm of rear-suspension travel and an extra seat-foam thickness (without increasing overall seat height) mean comfort whether sitting or standing.

In true Honda style, the CRF110F delivers legendary build quality and reliability, so the bike dependably fires up every time the starter button is pressed and does not stop until the tank runs dry—and when that moment is looming, the FI system provides a low-fuel warning light.

A big benefit for the young rider's "factory mechanic" is that the fuel-injection system eliminates the possibility of carburettor jets clogging with fuel residue if the motorcycle sits for an extended period—and reduced maintenance means more family time on the trail or track.

Regards
 Steve Ross

Upcoming Events - Term 2

Week 1 - Term 3

Monday 22nd July

- First Day of the Term

Friday 26th July

- NZ Playhouse Theatre 9.15am



Week 2 - Term 3

Monday 29th July

- Back Up Day for Car Ski Trip
- Subway orders in please

Wednesday 31st July

- Yr 5 & 6 Netball Fest in Oamaru

Thursday 1st August

- Yr 7 & 8 Netball Fest in Oamaru
- WGHS Open Night



★★★★ **Glenavy School Value Awards** ★★★★★

Principal's Award - **Aiden Gemmell** - **Integrity** - Being self motivated to want to do better in your learning and trying hard even when no one is looking.

Kororā - **Annika Menor** - **Self Management** - Being such an independent learner and making great progress in all areas.

Piwakawaka - **Josefina Contador** - **Self Management** - For trying your best in everything, you are starting to see mistakes as learning opportunities.

Ruru - **Gabe Machado-Blakemore** - **Self Management** - For having such a great start to your new adventure at Glenavy school, you always work hard and have a great attitude.

Tūi - **Nekiah Denley** - **Self Management** - Your attitude towards your learning has improved and you really give everything a good try.

Kea - **Rain Estillore** - **Self Management** - For all round awesomeness, great work in all your work. Well done Rain!

Karearea - **Stella Tukaki** - **Self Management** - Stella has shown that she is a great role model in helping run and manage pals as well as showing responsibility in class well done.

Mr D Award - **Logan Jenkins** - **Self Management** - New to our school Logan has settled in well and during maths time showed a great understanding of negative numbers Kia Pi and welcome along.

Maths Award - **Liam Mehering & Aaliyah Barros** - For excellent use of arrays and counting the strawberries in the strawberry patch.

Hockey Results

This week Glenavy Boomerangs played Duntroon Blue and lost 10-0. Our player of the day went to **Georgia Guy**(Waimate High).

Glenavy Greensticks played Totara-Argowan Strikers and lost 5-1 . Our player of the day went to **Arlan Dial**.



School Uniforms

Uniforms are now bought and ordered from [NZ](https://www.nzuniforms.co.nz/)

[Uniforms](https://www.nzuniforms.co.nz/)

Go online and order these directly from the shop.

They will be delivered to your house.

If you want to try one on for size we have one of each size at school in the office.



We are pleased to share the details of our upcoming Open Night at Waitaki Girls' High School, in which we invite new students for 2025 and their parents/caregivers to come along. Details are as follows:

Date: Thursday 1st August 2024

Who: Parents/Caregivers and students

Where: Come to the MK Dunning Hall

Time: 6:00 pm

What will happen: There will be a short presentation, and then you will have an opportunity to have a tour of the school and speak to staff and students.



Waitaki Girls' High School

Inspiring Personal Excellence in Learning and Life

waitakigirlshigh.school.nz 03434 8429

FROM THE CABINET OF KARNOVACH
UNRAVEL THE MYSTERY IN

DRIP

ONE ACT PLAY
STARRING
KATE LOW
LUKE ROBB
PRODUCED BY
BENJAMIN DONALDSON
KATE LOW

Doors open half an hour prior to showing
Cash door sales pending availability

Tickets available on Eventbrite
Waimate, July 8th - Silver Band Hall
Timaru, July 10th-13th - Roncalli College Hall 7:30 pm showings

Head to www.ambiversal.com for more information



HOCKEY
NORTH OTAGO

**NORTH OTAGO HOCKEY
SKILLS HOLIDAY PROGRAMME**

 **Date**
9th July 2024

YEARS 5-6 = 10AM - 12PM
YEARS 7-8 = 12PM - 2PM
YEARS 9-13 = 2PM - 4PM

REGISTER  

NETWORK WAITAKI RECREATIONAL TURF

For More Information Contact
Jaiden Chhika - jaiden@otagocricket.co.nz

COMMUNITY
dental service



The Community Dental Service will be closed for the upcoming school holidays:

Closed from: Monday 8th July 2024

Reopen: Monday 22nd July 2024

Three of our community dental clinics will be open during the break:

Hillmorton (80-82 Sylvan Street)

Aranui (240 Breezes Road)

Timaru (18 Woolcombe Street)

If your child is experiencing any dental pain/discomfort, you can call us on 0800 846 983 and/or email: comm dental@cdhb.health.nz and one of our clinicians will contact you.



ROCK HUNT

2pm

Prize rocks
hidden in the
Totara Forest
Lolly scramble +
sausage sizzle
to follow



TUG OF WAR

3pm

Teams of 8
Mixed Team
\$5 per person



FRIGHT NIGHT

5.30pm - 9pm

Fireworks to
follow!

Glowsticks
available!

VISITORS GOLD COIN DONATION

13th July 2024



bushtownwaimate.co.nz

**Donate A Calf
Today!**

Friesain Bull OR
Mixed sex Beef Cross

Back for another
year

**Who can
raise the
heaviest calf
for 2024??**

Trophy for the
top-heaviest
calf by sale

Prizes for 1st,
2nd and 3rd

Glenavy School PTA Calf Fundraiser



How to donate:

1. Confirm number of calves/Glenavy PTA tags to be assigned
2. Select and tag chosen calves with a PTA tag provided and a Nait tag
3. Feed, Feed, Feed, Feed
4. Sale date to be confirm (late November/early December 2024)
5. Calves to be delivered to the Waimate pavilion or pick up by arrangement
6. BBQ/bouncy castle and prize getters will be announced on the day

Please complete the below information if you would like to donate a calf/calves this season and return form into the school office or by emailing it to Glenavyschoolpta@gmail.com

Name: _____

Contact Number: _____

Email Address: _____

(So, we are able to update you with details for the weigh in/BBQ evening)

Number of tags needed/calves to donate: _____

(Please note you will need to Nait tag your calf prior to weigh in with your own Nait tag)

Please indicate type of calf or calves you are donating:

Friesian Bull ☐ Beef Cross ☐ Other: _____

I am able to deliver my calf/calves into the weigh in (Waimate):

Yes ☐ No ☐ Maybe ☐

I am needing our calf/calves picked up:

Yes ☐ No ☐ Maybe ☐

(If yes, a PTA member will be in contact to make arrangements)

If you would like another copy of this form for friends or family members or require more information, please either let the school office know or email us Glenavyschoolpta@gmail.com

Thank you for supporting Glenavy School PTA, it is much appreciated.

Happy Calving!!

PLEASE SUPPORT THOSE WHO SUPPORT US



DAIRY HYGIENE, AGRI CHEMICAL/SEED, CLEANING MATERIALS, STOCK FEED AND MUCH MORE.

Waimate Store, 62-66 Queen Street,
Waimate. p. 03 6891230

Oamaru Store, 2 Industrial Place,
Oamaru North. p. 03 4331240

FOR ALL YOUR ELECTRICAL NEEDS

- IRRIGATION
- DAIRY SHED & PLANT
- DOMESTIC SERVICES
- COMMERCIAL SERVICES
- APPLIANCE REPAIRS
- SECURITY & CCTV
- HEAT PUMPS & VENTILATION



**PLUNKET
ELECTRICAL**

ON CALL 24/7 - 0800 434 840

STILL'S FARM MACHINERY

Proprietors: Kerry & Raewyn Still

• Hydraulic Hose Repair Service

• All Makes & Models of Machinery

• Tractor & Farm Machinery Repairs in Workshop or on Farm

SH 1, Pekari Junction, Oamaru 9436

Ph. 03 431 3760 | Cell. 027 433 8030 | Fax. 03 431 3764

Web. 03 434 9443 | www.stillsfarmmachinery.co.nz

Veterinary Centre

19 Redcliff Road, Glenavy

Phone/Fax: 03 689 8118

Hours: Mon-Fri 8.30am - 4pm

"The leading light in animal health"

GLENNAVY

After Hours
Emergency number

0800 838 111

by the Big Blue Cross

Call on the friendly,
helpful staff for all your
farming supplies.

**NORTH OTAGO
PASTORAL
SERVICES**

GRAIN & SEED - CHEMICALS
ANIMAL HEALTH - STOCK FOOD
FENCING - DAIRY REQUIREMENTS

Kelvin Mansfield 027 544 1171

Gerard Dawson AH 437 0725

Matthew Paton 027 443 4701

Craig Dineen 021 109 1087

Nick Walters 027 224 4057

3 USK STREET OAMARU | WWW.NOPS.CO.NZ | 434 7766

Proud Sponsors of Glenavy School



For all your
Dairy Hygiene needs:

Jason Birchall

021 494 690

jason.birchall@ecolab.com

ECOLAB

MAINLAND SPREADING

Call (03) 439 5501

or Kylie 027 484 7646

office@mainlandgs.co.nz

Local knowledge that counts

Civil - Commercial - Rural - Domestic



Phone: (03) 689 7881

e-mail: enquiry@rooneygroup.co.nz

Hope & Associates Legal

Barristers & Solicitors

120 Queen St, Waimate (03) 689 6331

78 Thames St, Oamaru (03) 434 9930

Mon to Wed 8.30am to 3pm & Thurs & Fri 8.30am to 5pm

Contact us today for all legal assistance.

SJ Allen Ltd

100% LOCALLY OWNED AND OPERATED

• Farm Effluent Ponds & Sump Cleaning

• Silo Cleaning

• Septic & Holding Tank Cleaning

• Water Blasting of Cow Sheds & Drains

• Effluent Stirrer Available

• High Pressure Water Blasting

0800 155 669

Taking care of your business!

Farmlands



- AGRICULTURE WORK
- DRILLING
- SILAGE CHOPPING
- BALING
- CARTAGE
- SALES
- WOODCHIP

Jamie Barlow
Operations
Manager / Sales
027 200 55 72

Brad Cunningham
Ag Manager
207 200 55 71

Grant Kinsman
0274 344 819

Account Enquiries:
office@kinsmancontracting.co.nz
www.kinsmancontracting.co.nz

Ph: 03 415 5084

kinsmancontracting Ltd

Kawasaki can-am

COLIN CLYNE MOTORCYCLES

P. 03 437 0559

419 THAMES HWY, OAMARU

WWW.COLINCLYNEMOTORCYCLES.CO.NZ



HOME OF THE GOLDEN FRIES

Think Local ... Buy Local

• Gluten Free • Carbon Zero

• 100% locally owned and

operated • Using 100%

locally-grown ingredients

Visit our Factory Shop at:

5 Makikihi Beach Road

www.makikihifries.co.nz



WAIMATE

45 Queen Street, Waimate

Ph: (03) 689 7100 E: ruralmeats@xtra.co.nz

• makers of quality small goods

• mobile abattoir service and wild game processors

MAUNGATI LIME CO LTD

Suppliers of High Quality Lime

• Track Rock • Lime Chip • Aggregate

Proud to Support Glenavy School

Alistair Johnson 0274 338 735

Sean Johnson 027 653 1722

Holme Station, RD2 Timaru. Ph: 686 4859