

## Newsletter

Kia ora Salford Whānau,

What a fabulous afternoon of running we had on Friday. Thank you to all of the whānau who came along to support and cheer the children on and especially to those whānau members who helped out on the course. The tamariki love seeing a familiar face encouraging them as they run, your help was greatly appreciated.

While many of the children are aiming for a finish that will get them on the bus to the Zone event in Bluff, most children were focussing on their own individual goals and it was fabulous to have the big smiles crossing over the finish line with those goals having been achieved. A lot to be proud of regardless of the goal achieved! Thank you to Miss Soper for her organisation of the event and to all of the staff for supporting to ensure it was a success. Welcome to Buddy and his whānau who have joined us at Salford



School - Te Kura o Ngā Kākano ā Salford in the past fortnight. It is lovely to have you here. We look forward to getting to know you over your time here at Salford School.

On Rāatu (Tuesday) we had 18 children take part in the Chess Power Chess Tournament. There were 56 competitors in all, taking part from 8 schools. The Salford ākonga played well with

- 8 achieving Credit in their section,
- 5 achieving Merit
- 5 achieving Excellence.

Rimu tied for third place in the Junior Section with Okitha taking out the win and tournament champion for the day as well.



### Autumn Time

#### Inside this issue

<i>Salford Cross Country Chess Tournament</i>	1
<i>Attendance</i>	2/3
<i>PTA Fundraiser</i>	4
<i>Book Fair</i>	5
<i>Polyfest</i>	6
<i>Mid-Year Learning Conf. Teacher Only Days Board of Trustees</i>	
<i>BOT Elections 2025</i>	7
<i>Sponsors</i>	8
<i>Room 5 Happenings</i>	9
<i>Whats Coming Up</i>	10
<i>Glossary / Sponsor</i>	9
<i>Southern Stars Marching</i>	12
<i>Phoenix Marching</i>	13

## Attendance:

There is a lot of talk and focus on Attendance at School and the importance of consistent, regular attendance through the media and by the Government at the moment. Regular consistent attendance at school supports ākonga with continuity of learning and also continuity of friendships.

When tamariki are frequently and sporadically absent from school they find it increasingly challenging to keep up with the learning in the classroom, missing bits and pieces making it difficult to tie the links together for clarity and understanding of concepts being learned. Ākonga are often playing 'catch up' in the classroom. This also carries over to friendships with new games being played and rules evolving. Children also make new connections and friendships as they traverse through primary school.

Tamariki with high levels of absence can find it difficult to merge back into the games and activities when their friends have developed new connections without them. Lateness to school can also impact on children settling into class and school in the morning. We notice children who are consistently late do not have the social time to catch up with their friends before school begins. This time before school begins, helps them to prepare for their day, starting their day with some fun and play with their friends, it also gives them time to connect and chat with their teacher.

At Salford School teachers are in their classrooms at 8:30am daily especially for this time of connection and relationship building.

Rushing in the door when class has already started (often notices and school wide information for the day has already been shared) unpacking and getting equipment ready for learning, brain food, water bottle etc all while the class is up and going for the day is quite distressing for tamariki and does not provide a positive start to the day. (There are times when this just happens to us all however when it is a regular occurrence it is up-setting for the child and disruptive to the classroom).

The Government has introduced the STAR (Stepped Attendance Response) initiative to support with attendance in schools.

You can find more information about it at this link: <https://www.education.govt.nz/stepped-attendance-response-star>

The diagram below indicates how this looks for Salford School and the steps we take to support with tamariki being at school every day.

## Chatbus

*Miles is here on Wednesdays this year to support the tamariki. Chatbus operates with tamariki being able to make self-referrals at school and whānau (and kaiako) are also able to refer. Referrals can be made via the [online link](#). This is accessible on the school website and is also shared on Hero. Interested in finding out more about the origins of Chatbus - [watch this clip](#) from the Chatbus South Facebook page.*

*Chatbus has a [Facebook page](#) which is used to share hints, tips and general information regarding Chatbus and its journey in it's 10 Invercargill schools.*



## Facebook -

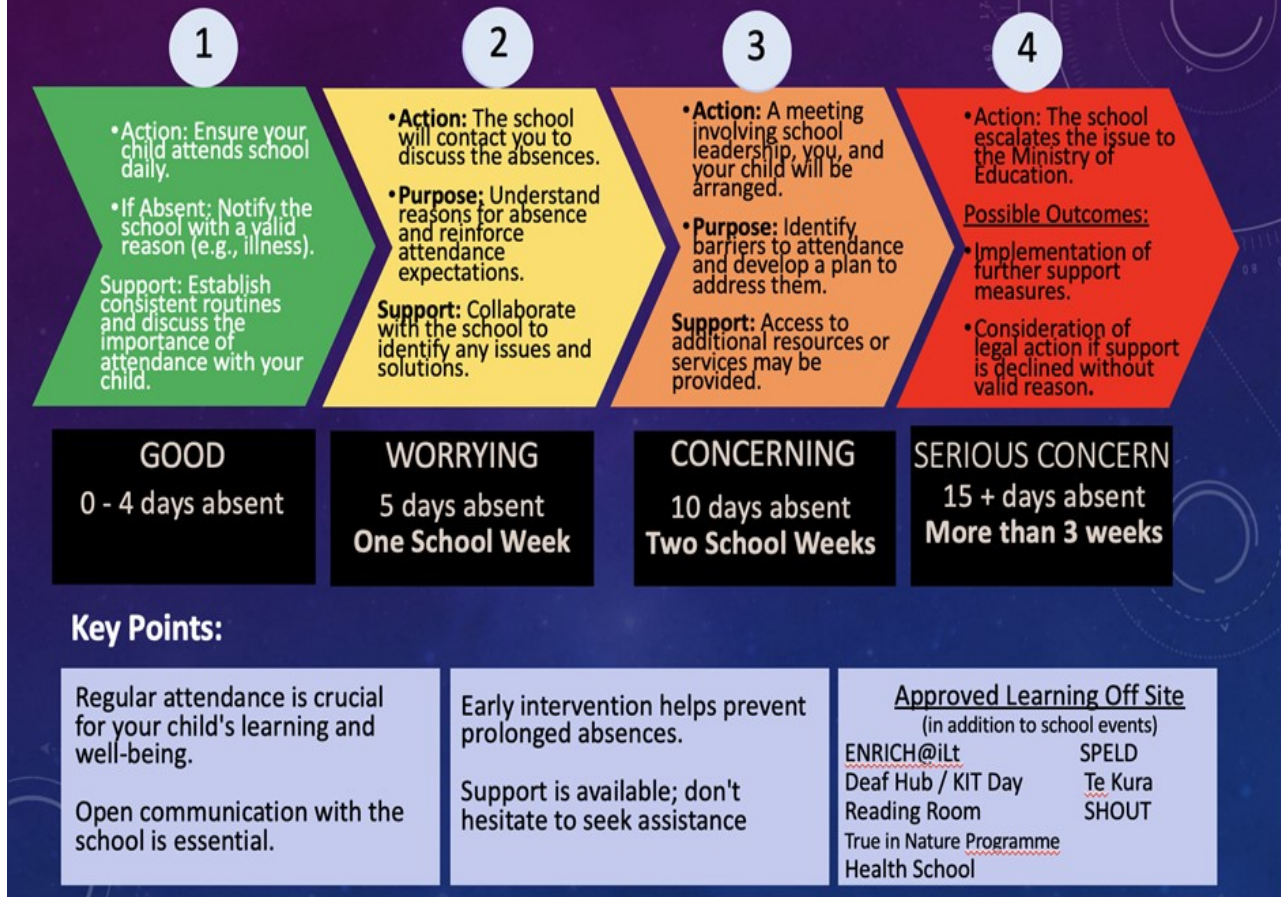
*This is our sunshine, rainbows and lollipops page!*



*We will be sharing lots of great things that happen at the school, events and opportunities as well as photos of just the 'everyday' things as well.*



# STAR Attendance Flowchart



If a child is missing 10 days or more of school per term this equates to a school term and more in the space of a year. Days quickly add up!

f a child is missing 10 days or more of school per term this equates to a school term and more in the space of a year. Days quickly add up.

## Skool Loop

Sports notices will be shared through School Loop.  
 Enrolments for sports can be completed directly on this app.  
 You can also communicate using the "FORMS" Icon for

- your child's absence,
- make after school care arrangements - book in and cancel
- Make Sports registration bookings



### **PTA Fundraiser:**

We had 46 families who supported the PTA with their recent Croissant and Cookie Dough Fundraiser. Thank you to all of you for your support of this!

At our last assembly we announced the final spot prize winners, the top selling House and the overall top seller.

Congratulations to:

Charlee F, Nathan and Jojo K, Alexandra B, Indi and Lucy W, Joseph and Jacob D, Arthur and Charlotte W, Arlo R, Clovis M, Charlotte M and Zack B who all won spot prizes from the spinner draw!!!

**Manapouri House** was the top selling House. Manapouri earned 20 House points for their mahi and the following fundraisers will have a special movie afternoon before the end of term with cookies and iceblocks: Nathan and Jojo K, Olivia and Mason R, Caris and Jensen H, Aria and Jonty S, Bodhi M, Florence D, Eva and Cooper M, Lucy W, Henry L, William V, Arlo R, Eliza and Josie C, and Bianca and Aidan M.

Our top seller had their family and friends far and wide supporting them, congratulations Emilie D for your amazing effort!

The PTA does an amazing job supporting the school to provide 'extras' (big and small) for the tamariki and staff at Salford School. In the past year they have: purchased standing tables for the senior classrooms, contributed towards the cost of the Year 6 leavers book (this is a gift to the Year 6 students from Salford School), contributed a donation to camp to help keep costs down for everyone who attended, purchased new trestle tables for the hall to replace the old ones that were steadily falling to pieces, funded inside games for every classroom and funded a games and equipment box for the junior outdoor equipment.

They have a few projects up their sleeves for the year, one of these is to support the School's Matariki Breakfast by supplying bread and sausages for a Matariki Breakfast Sausage sizzle.

**The next PTA meeting is in the staffroom on Rāatu 22nd Hongongoi (Tuesday 22nd July).**

**We look forward to seeing you there.**





# *Come to Our* **BOOK FAIR!** *Reading Is Out of This World!*



*Dates · Times · Place*

## 25th - 30th May

Sunday 25th May	1:00 - 2:00	Friday 30th May
Monday 26th May	8:30 - 9:30    2:30 - 5	8:30 - 9:30 - Then pack up
Tuesday 27th May	8:30 - 9:30    2:30 - 3:30	
Wednesday 28th May	8:30 - 9:30    2:30 - 3:30	
Thursday 29th May	8:30 - 9:30    2:30 - 5	

## Salford School Library



© 2011 Scholastic Inc. 9505 • 61000

### **Polyfest:**

This year everyone in the school is taking part in Kapahaka however Polyfest is optional with the children having the choice to perform on the Polyfest stage.

We are booked to perform on **Rāpare (Thursday) 21st Here Turi Koka** (August) for our performance day. We will have two groups (one junior and one senior) performing in their own separate time slots. We will confirm the performance times early next term.

### **Mid Year Learning Conferences:**

This term we have learning conferences which will take place on **Rāpare (Thursday) 26th Pipiri** (June).

This will be a teacher only day with interviews happening throughout the day. School will be closed for instruction on this day so that the 15 minute conferences can be held.

This is an important time to be able to catch up on your child's learning and achievement for the Mid-point of the year and discuss goals for the remainder of the year. The tamariki enjoy celebrating their learning with you and sharing their own goals for their learning during these meetings. Bookings will open up closer to the time.

### **Teacher Only Days:**

The Ministry has allowed schools two teacher only days for professional development focusing on the new curriculum. Salford School will be using **Rāpare (Thursday) 31st Hongongoi** (July) (Term Three) to work with Rob Profitt-White to develop and explore Mathematics teaching, learning and the new curriculum for maths. Our second curriculum based Teacher Only Day will be in term four on **Rāmere (Friday) – 21<sup>st</sup> Whiringa ā Rangi** (November).

Arohanui

Sarah Gibbs

Tumuaki Salford School - Te Kura ō Ngā Kākano ā Salford

***Whāia te iti kahurangi, ki te tuohu koe, me he maunga teitei***

Seek the treasure that you value most dearly, if you bow your head,  
let it be to a lofty mountain

### ***Salford School Board of Trustees—update***

Update from the Board of Trustees Meeting held on the 13th of May, following the invitation to the community to consult on the option of moving from a Triennial Election style to that of a Staggered Election Style.

The decision of the meeting, is that Salford will make application to the Ministry of Education to move to a staggered election process and in this regard, for 2025 there will be **5 Parent elected Trustees**.

- 3 for three years
- 2 for 18month term

*Regards*

*Michelle Findlater,*

*Presiding Member, Salford School Board of Trustees*

## Salford School Board of Trustees

### Election process for 2025 is getting underway.

You will receive a number of communications over the next few months, and one of the most important is **Is your postal address correct on file?**

Please check [HERO now](#), as this is something you can do to help the Returning Officer.

Salford will continue with postal voting and it is important our home addresses are correct.

One of the board's primary objectives is making sure every child reaches their highest possible standard in educational achievement.



More details will come out soon. Think about this, talk to our current Board Members if you are unsure of what a Board of Trustees is responsible for, come and sit in on a Board meeting.

Current Board Members (Elected Parents)

- Michelle Findlater—Presiding Member
- Nikki McRobie
- Amelia Nicholson
- Dallas Peters





# Salford School

Thanks to the below businesses for sponsoring our school app:

embrace  
ORTHODONTICS



Windsor  
Montessori  
Preschool  
*Strong seeds of learning*



## Southern Automobiles

209 Dee Street, Invercargill | 03 211 2233



AUDIO VISUAL DESIGN & PRINT

avdp.nz



NumberWorks  
'nWords

Expert Maths &  
English tuition

TAP  
HERE

Heritage  
FURNITURE

BLAMPIED INTERIORS

**BAXTER & NEILSON**  
**PLUMBERS** Ltd

Proudly committed to the south for over 100 years

Your trusted Plumbers,  
Gas fitters, Drain-layers,  
Roofers and Electricians  
in the Southland region



**Guthrie Bowron**

*Inspiration starts here.*

87 Yarrow Street, Invercargill



**ALTOGETHER**

Joshua Allison

BETTER

LICENSED UNDER THE REA ACT 2008

If you would like to advertise on the Salford School Skool Loop App please  
email [Content@skoolloop.com](mailto:Content@skoolloop.com)



To download our app: In Google Play & App Store search  
'Skool Loop' & choose School once installed.



# Room 5

**ROOM 5 HAS MADE A FANTASTIC START TO  
TERM 2!**



**We are loving our new  
Rainy Day Games. A huge  
'Thank You' to the PTA for  
this donation.**



**So much hard mahi and  
aroha went into the  
exploding boxes we made our  
Mums for Mother's Day.**



**This term, we are learning all about Space and our planet's  
place in our Solar System. We are enjoying working together  
to find the answers to our many 'wonderings'. Below are a few  
of the beautiful pieces of digital art that Room 5 has  
created.**



## WHATS COMING UP:

Use the Calender icon on SKOOL LOOP and keep up to date with all events at Salford School. *This is linked directed to the School online calendar.*

### STUDENT LUNCHES

**Daily—Heat ups**—please ensure your child's lunch is in a container or wrapped suitable for a warmer. Lunch must be clearly named and include the class room number.

**Tuesday—Sushi—Flying Wasabi**— <https://orders.lunchonline.co.nz/Home/AccountLogin>

- **This goes online with Lunch Online in 2025. before 2.00pm on Monday**

**Wednesday—Subway Orders** - **please order ONLINE via the website — Order**

**BEFORE 9:00AM AT [www.subwayexpress.co.nz/](http://www.subwayexpress.co.nz/)**

**Friday—Sausage sizzle** - orders **MUST** be completed using the [myKindo app](#) or you may email the PTA on [pta@salford.school.nz](mailto:pta@salford.school.nz). **All orders must be completed by noon on Wednesdays.**

### Upcoming dates:

- 19 May—Salford School Cross Country postponement day.
- 22 May—Phoenix Zone Cross Country—Bluff
- 26 May—Phoenix Zone Cross Country—Bluff—postponement day
- 26—30 May Book Fair Week—Salford Library
- 2 June—Kings Birthday—**SCHOOL IS CLOSED**
- 13 June—Southland Primary School Cross Country (*Top 6 runners 10 and 11 year old events only*)
- 17 June—BOT Governance Meeting—starts at 6:00pm
- 20 June—Matariki—**SCHOOL IS CLOSED**
- 24 June—Tri Nations Tournament (Windsor North / Waihopai / Salford)
- 25 June—Ski Trip to Remarkables Park
- 26 June—Teacher Only Day—Mid Year Learning Conferences
- 27 June—End of Term 2 2025
- 14 July—Term 3 2025 begins
- 22 July—PTA Meeting—staffroom 7:00pm
- 31 July—Teacher Only Day—Rob Profitt-White—developing/exploring Mathematics
- 21 August—Polyfest—performance Day
- 19 September—Term 3 2025 ends
- 21 November—Teacher Only Day

Embrace Orthodontics is a specialist orthodontic practice based in Invercargill serving the Southland region for over 10 years. Dr Jennifer Lee and Dr Michael Skilbeck wish to provide a personalised, efficient and affordable orthodontic treatment and continue to create beautiful and healthy smiles in Southland.



## Embrace Orthodontics

### Contact details

Phone—03 218 9970  
76 Victoria Avenue, Avenal,  
Invercargill.

### Week 4 Glossary

<i>Whānau-</i>	<i>family, wider</i>	<i>Rāmere-</i>	<i>Friday</i>
<i>family</i>		<i>Haratua-</i>	<i>May</i>
<i>Kia ora-</i>	<i>hello, welcome,</i>	<i>Pipiri-</i>	<i>June</i>
	<i>thank you</i>	<i>Hongongoi-</i>	<i>July</i>
<i>Kaiako-</i>	<i>teacher</i>	<i>Here-Turi-Koha-</i>	<i>August</i>
<i>Tumuaki-</i>	<i>Principal</i>		
<i>Ākonga-</i>	<i>student(s)</i>		
<i>Tamariki-</i>	<i>children</i>		
<i>Mahi-</i>	<i>work</i>		
<i>Rāhina-</i>	<i>Monday</i>		
<i>Rāatu-</i>	<i>Tuesday</i>		
<i>Rāpare-</i>	<i>Thursday</i>		





# SOUTHERN STARS

Marching club

Open day!

Ages 7+

Sunday - May 25

11 - 12:15

Sacred heart school

Marching is a sport everyone can do! No experience needed! Just determination, passion and dedication!! Bring a friend and see what we are all about!

Make sure you come along to our Open day to find out more !!!

Hope to see you and all your friends there!



# WE ARE RECRUITING

## OPEN DAY

Saturday 31st May

11am - 12:30pm

Donovan School, Drury Lane, Invercargill

**JOIN OUR TEAM**

u13 Grade

7yrs-12yrs

Intro Grade

5yrs-10yrs

Ofc Grade

4-7yrs



More Information  
0272187588



Look us up  
/phoenixmarchinginv



Email us  
phoenixmarching@xtra.co.nz



Phoenix Marching

